



## Notes on Electronic Edition

This edition is based on the printed edition published by Philipp Reclam jun., Leipzig in 1882.

All direct problems and selfmates have been computer tested using Matthieu Leschemelle's computer program *Problemiste*. The studies have been manually tested using *Fritz 6* with the Nalimov end-game database. The conditional problems, however, have only been checked for obvious errors.

Problems without a solution have been indicated with [†] after the stipulation, problems with short solutions with [§], and problems with multiple solutions with [\*], and an indication of the problem given after the (original) solution. Any other errors discovered in the original solutions have been added in brackets, but obvious misprints have been silently corrected.

Two oddities are worth mentioning. In two-mover 70, both black bishops are on white squares. In three-mover 58, the solution given in the original is faulty. Healey's own collection gives the correct solution, however.

Solutions have also been changed from long to short algebraic form, and slightly expanded in cases where the extremely contracted solutions of the original seemed excessive. Lines not present in the original solutions have not been added.



SAMMLUNG LEICHTERER  
SCHACHAUFGABEN

Zweiter Teil

Herausgegeben von Jean Dufresne

[1882]



## Vorrede

Die von mir im Jahre 1881 veröffentlichte „Sammlung leichter Schachaufgaben“ war ursprünglich nur dazu bestimmt, einen Anhang für mein „Kleines Lehrbuch des Schachspiels“ zu bilden. Die freundliche Aufnahme, die sie gefunden, sowie die unmittelbar an mich gerichtete Aufforderung zahlreicher Schachfreunde veranlassen mich, eine Fortsetzung folgen zu lassen, in der man jedoch auch eine Minderzahl schwierigerer Aufgaben antreffen wird. Um den inneren Zusammenhang beider Sammlungen zu unterhalten, habe ich den Titel nicht verändert.

In jene erste hatte ich viel amerikanische Aufgaben aufgenommen, welche Schönheit der Idee mit Gefälligkeit der Ausführung verbinden, namentlich, weil sie in Deutschland den Reiz der Neuheit für sich haben mußten. Ich entnahm sie theils ausländischen Schachzeitungen und Schachabschnitten, theils dem werthvollen Sammelwerke: „American chess nuts“, welches 1868 in New-York von E. B. Cook, W. R. Henry und G. A. Gilberg herausgegeben, 2400 Probleme umfaßt und die Lösungen in englischer Bezeichnung mittheilt. Die von mir daraus gewählten Meisterstücke Cheney's und Loyd's bilden, wie ich glaube, eine Zierde der ersten Sammlung.

In der Einleitung derselben ist der Werth der deutschen Problemcomposition genügend hervorgehoben.

Für die vorliegende zweite Sammlung habe ich eine größere Zahl deutscher Probleme zusammengestellt, welche gleich den übrigen fremdländischen, fast sämmtlich während der letzte beiden Jahrzehnte erschienen sind; jedoch einige ältere eingefügt, wie die des genialen englischen Problemcomponisten Graham Campbell, so wie andere, deren Ideen nachträglich häufig benutzt worden sind.

Man wird darunter vielen in Problemturnieren preisgekrönt

Compositionen begegnen. So haben z. B. die vierzügige No. 102 von Pradignat, die vierzügige von Fr. Dubbe No. 22 und von L. Noack No. 40 im Berliner Problemturnier des deutschen Schachbundes 1881 erste Preise erhalten. Der dreizügigen Aufgabe von Ehrenstein No. 42 und der vierzügigen von Dobruski No. 21 ist im Problemturnier von Brentano's Chess Monthly 1882, der vierzügigen von Schrüfer No. 46 im italienischen Problemturnier 1877 der erste Preis zuerkannt worden. Andere die Problemturniere betreffende Angaben wird man bei den Lösungen finden.

Da mir die Herren professor Johann Berger in Graz, Fr. Dubbe in Rostock, Max Kürschner in Nürnberg, Hermann Lehner in Wien, Nadebaum in Tessin, Fr. Schrüfer in Bamberg, eine Auswahl ihrer eigenen Compositionen zur Verfügung gestellt haben, halte ich es für meine Pflicht, für diese Freundlichkeit hiermit öffentlich meinen Dank auszusprechen. Ebenso danke ich Herrn Valentin für die gütige Ueberreichung vorzüglicher Ausgaben der von ihm redigierten „Frankfurter Schachzeitung.“

Berlin, 15. November 1882

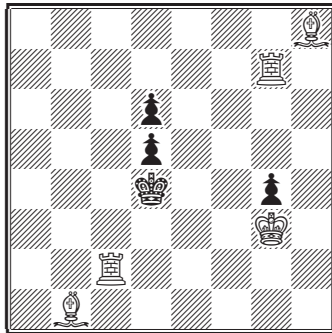
Jean Dufresne

## Einleitung

Man findet in dieser Sammlung 1. Direkte Matte (zwei, drei und vierzügige Aufgaben), 2. Bedingungsaufgaben, 3. Selbstmatte, 4. Studien. — Als Ergänzung zum Inhalt der Einleitung der ersten Sammlung möge hier noch Folgendes erwähnt werden.

### I. Nebenlösung. Doppelzug.

Wenn eine Aufgabe durch zwei oder mehrere erste Züge in der aufgegebenen Zeitfrist gelöst werden kann, ist sie nebenlöslich. So würde dies z. B. die folgende zweizügige Loyd'sche sein, wenn auf



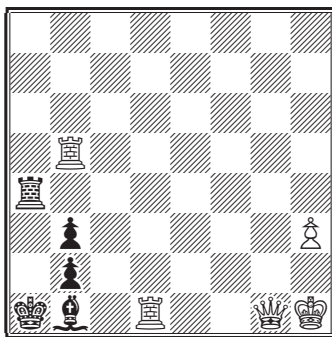
g4 der schwarze Bauer fehlte. Den alsdann würde Weiß nicht blos durch 1. Tb2, sondern auch durch 1. Kf4 Matt mit dem zweiten Zuge erzwingen.

Im Falle die Lösung nur durch einen ersten Zug möglich ist, Weiß jedoch, nachdem Schwarz den ersten Zug beantwortet, in einer Spielart durch zwei oder mehrere Züge zum Ziel gelangen kann, so hat die Aufgabe einen Doppelzug (franz. *double coup*, engl. *dual*).



Der Doppelzug, der die betreffende Spielart nebenlöslich macht, ist kein Vorzug einer Aufgabe, jedoch jedenfalls gleichgültig, wenn die Spielart, die ihn zuläßt, unwichtig ist. Die Benachtheiligung, welche die Aufgabe durch den Doppelzug erleidet, steigert sich mit dem Werthe der Spielart, der er angehört. Geradezu eine Entstellung ist er, wenn er im Hauptspiel vorkommt. — In der folgenden Loyd'schen Aufgabe begegnet man einigen gleichgültigen Doppelzügen.

S. Loyd



Nur 1. Dg8 führt zum dreizügigen Matt. Antwortet Schwarz 1. Ta7, so entscheidet nur 2. Dh7; auf 1. Ta6 nur 2. Dg6. Auf 1. Ta3 jedoch kann Weiß 2. Dg6 oder Dh7; auf 1. Ta2 2. Dxb3, oder auch Dg7, -h7 spielen. Die *doubles coups* sind in beiden Fällen unerheblich. — Jedenfalls ist es besser, daß ein *double coup* unbedeutender Art stehen bleibt, als daß zu seiner Beseitigung die Aufgabe mit einem führ ihre Idee überflüssigen Material belastet wird.

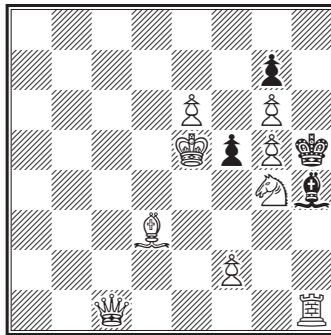
## II. Schlagen in Vorübergehn mit dem ersten Zuge.

Dies ist nach meiner Meinung zulässig, sobald aus der Stellung beweiskräftig hervorgeht, daß Schwarz mit seinem letzten Zuge den Bauer zwei Schritt vorgerückt hat, den Weiß en passant schlägt. Die folgende Aufgabe halte ich daher für durchaus correct.

Hier spielt Weiß:

1. gxf6 und ist hiezu berechtigt, da Schwarz keinen andern Zug zu-

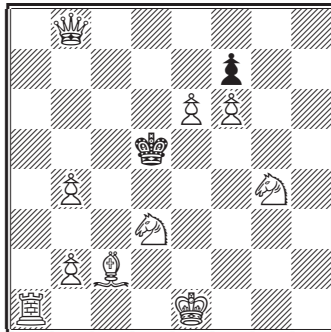
Ph. Klett



letzt gemacht haben kann, als f5, wie man bei genauer Prüfung der Stellung leicht erkennen wird.

III. Die Rochade mit dem ersten Zuge.

Diese ist unzulässig, weil man aus der Stellung nicht ersehen kann, ob Weiß bereits einmal der König oder Thurm gezogen hat. Die folgende Aufgabe von Loyd hat daher nach meiner Meinung keinen Anspruch auf Correctheit.



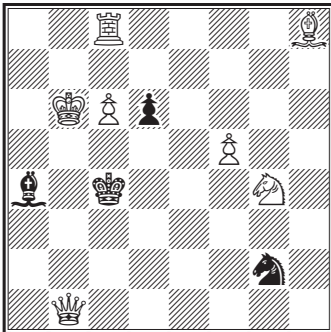
Hier spielt Weiß:

1. o-o-o, wodurch allerdings die Aufgabe in zwei Zügen gelöst wird. Mit Recht kann aber derjenige, dem sie vorgelegt wird, einwenden:

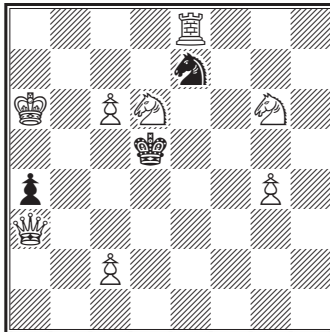
Aus der Stellung ist es nicht erkennbar, daß Weiß zu rochieren berechtigt ist. — Das Schachproblem außerhalb jedes Zusammenhangs mit der Schachpartie stellen zu wollen, halte ich für einen Mißgriff, der der Problemcomposition nicht förderlich sein kann.

# 1. Zweizügige Aufgaben

1. Aurelio Abela

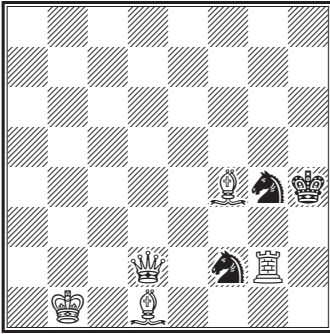


2. Aurelio Abela

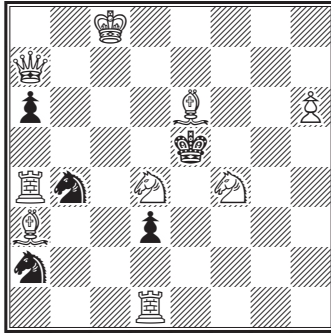




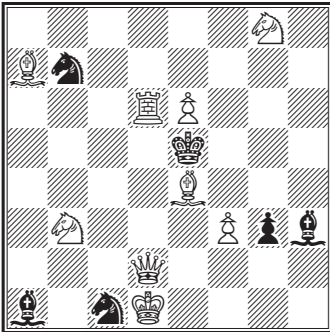
7. Conrad Bayer und J. Plachutta



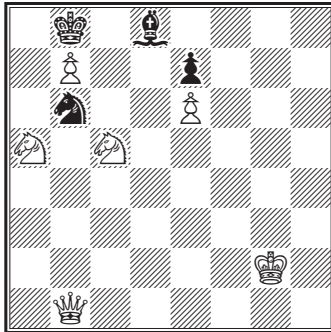
8. Miss Beechey



9. Johann Berger

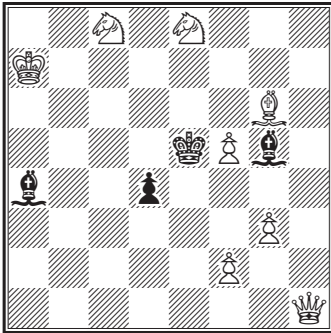


10. Oscar Blumenthal

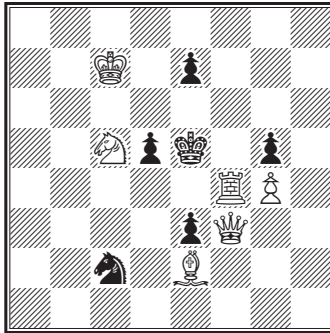




15. Budde in Christiania

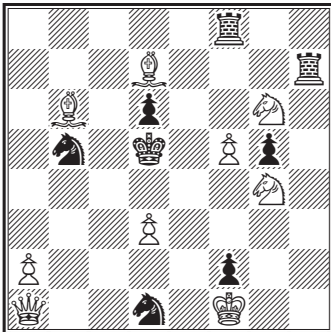


16. G. E. Carpenter

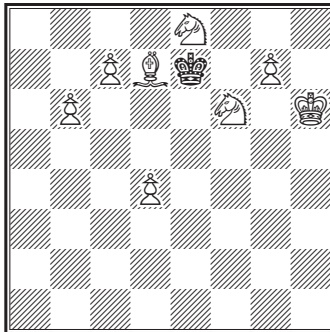


[ *Lesehalle*, 1882 ]

17. G. N. Cheney

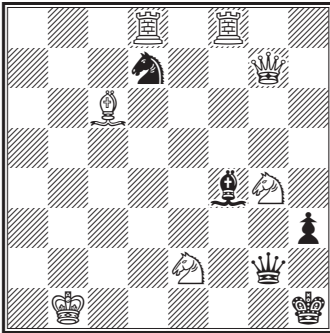


18. G. N. Cheney

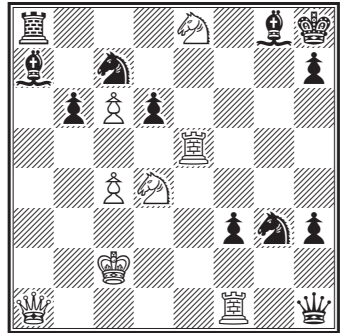




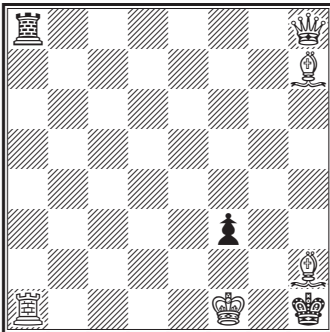
19. G. Chocholous



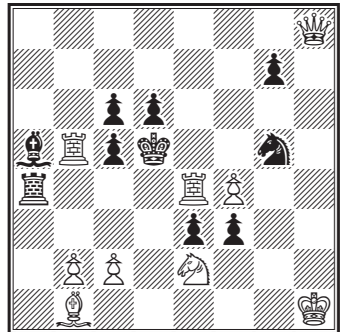
20. G. Chocholous



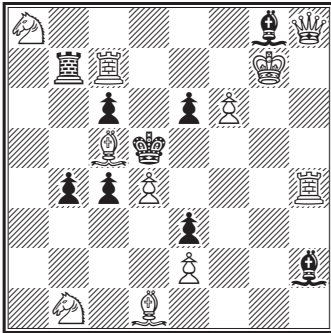
21. G. Chocholous



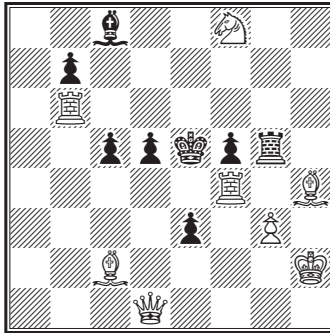
22. F. C. Collins in London



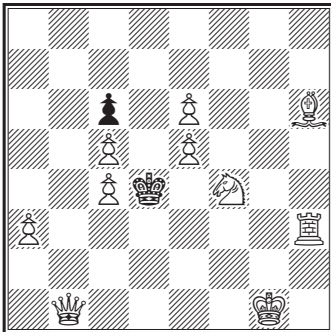
23. F. C. Collins



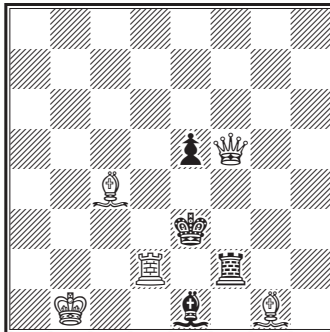
24. C. H. Coster



25. C. H. Coster

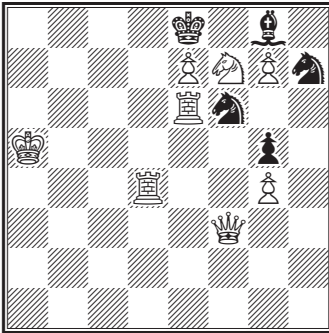


26. E. B. Cook

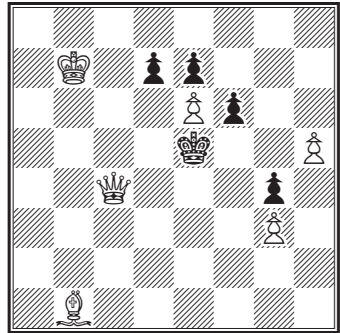


[201, *Brentano's Chess Monthly*,  
Febr., 1882]

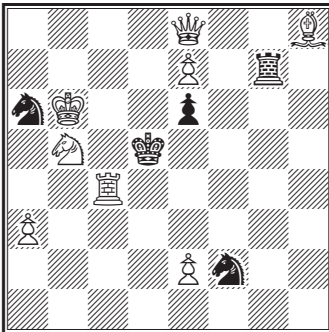
27. E. B. Cook



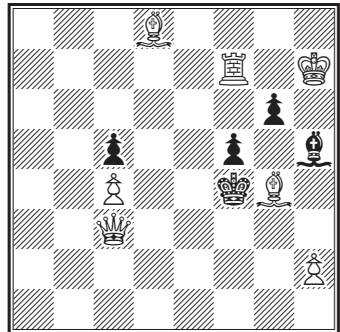
28. J. Crake



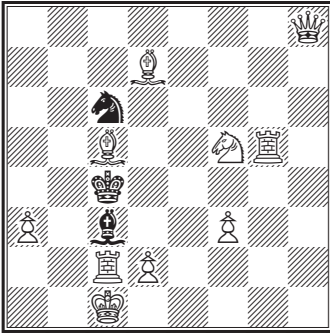
29. J. Crake



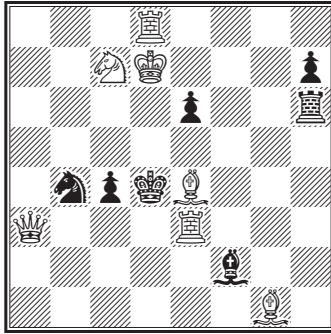
30. J. Crake



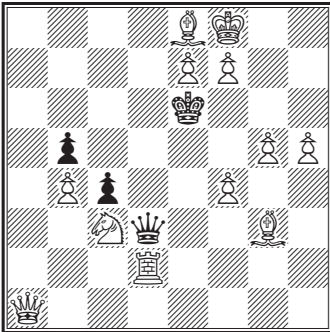
31. C. E. Dennis



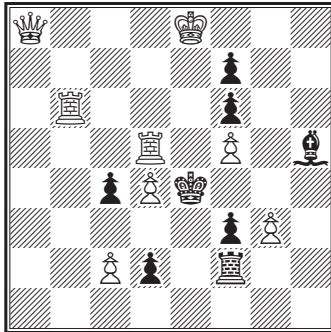
32. C. E. Dennis



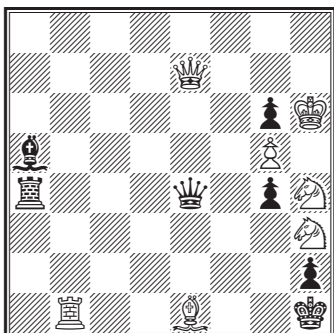
33. Fr. Dubbe in Rostock



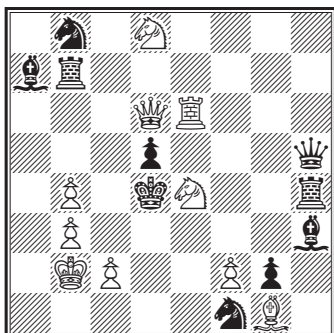
34. Fr. Dubbe



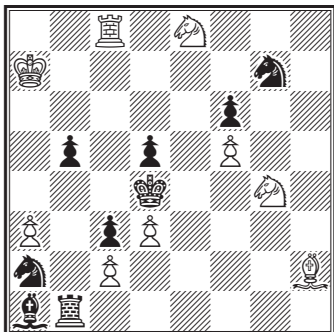
35. Fr. Dubbe



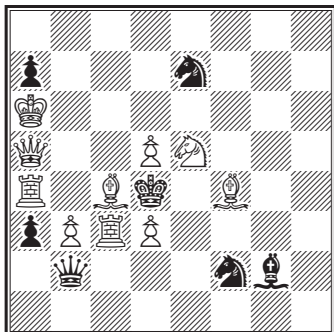
36. Moritz Ehrenstein in Budapest



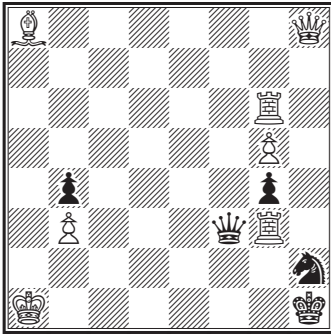
37. Jacob Elson



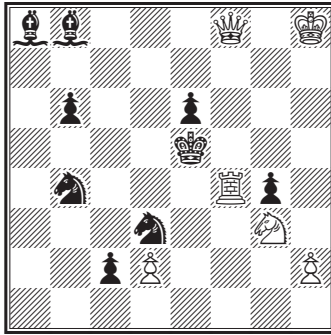
38. Hugo Faehndrich in Wien



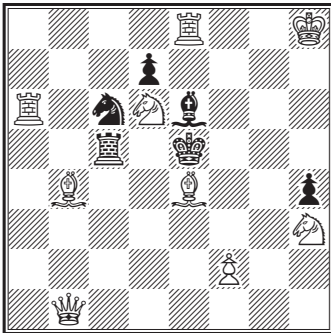
39. J. G. Finch



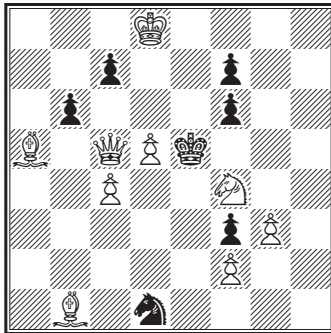
40. J. B. Fisher



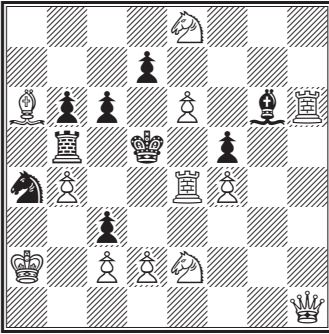
41. E. N. Frankenstein



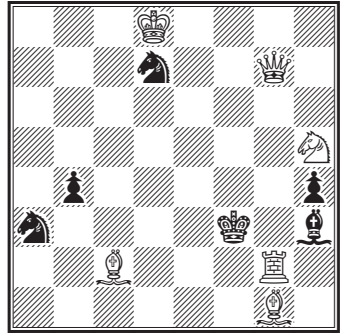
42. Fuß und Peetz in Clausthal



43. Fritz von Geijerstam

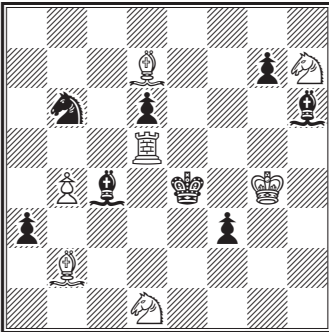


44. Fritz von Geijerstam

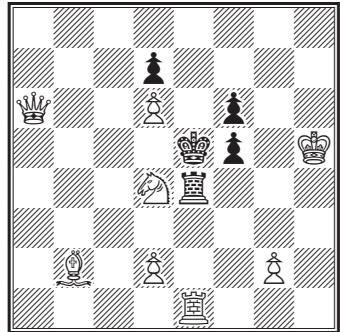


[ 3 Pr., Paris 1878 ]

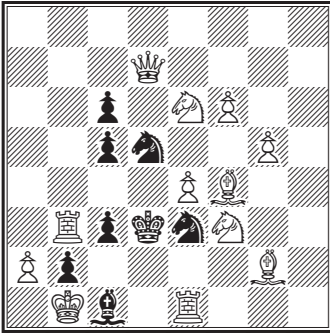
45. C. A. Gilberg in Newyork



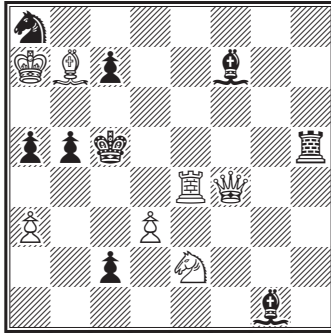
46. S. Gold in Wien



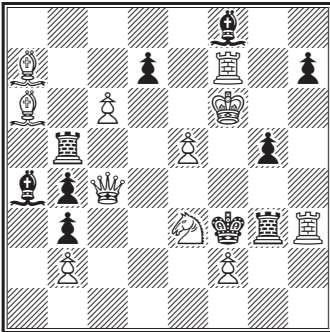
47. F. Healey



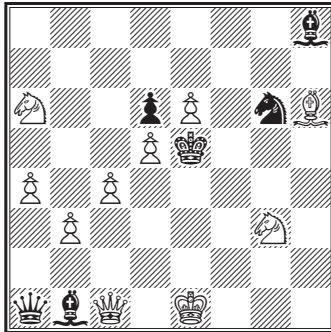
48. Hertzprung in Kopenhagen



49. G. Hume

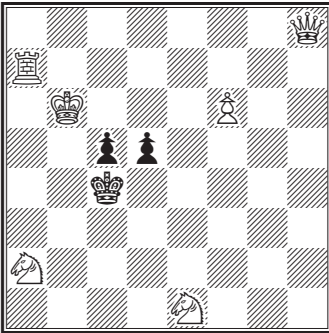


50. J. Jespersen in Dänemark

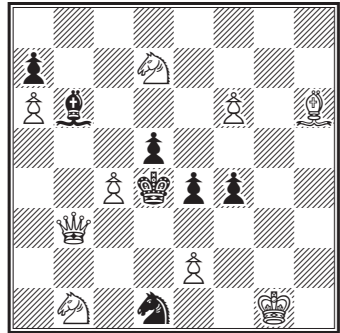




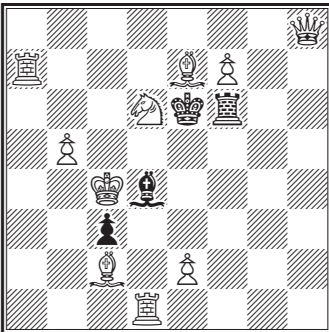
51. Albert Kauders in Wien



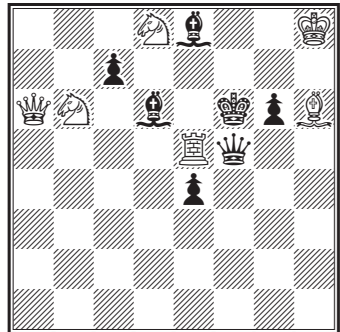
52. F. J. Kellner in Wien



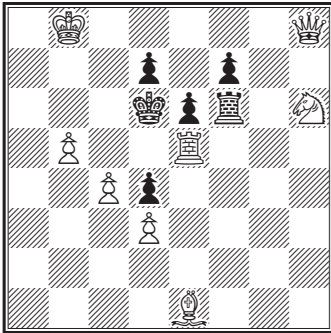
53. Kidson



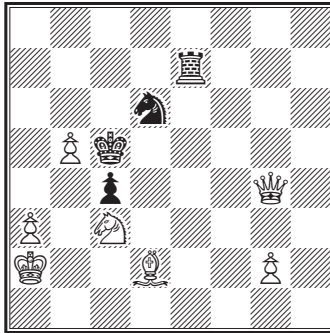
54. Carl Kondelik in Paris



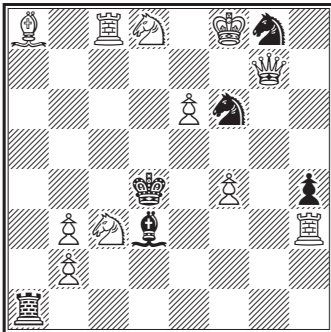
55. Carl Kondelik



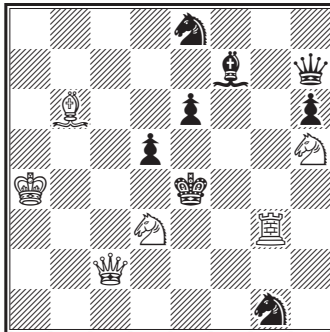
56. M. Kürschner in Nürnberg



57. M. Lansquenet

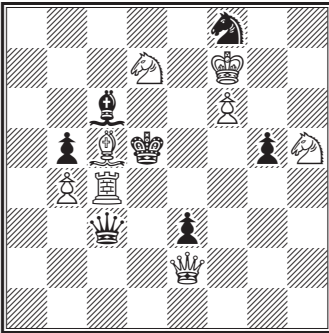


58. B. G. Laws

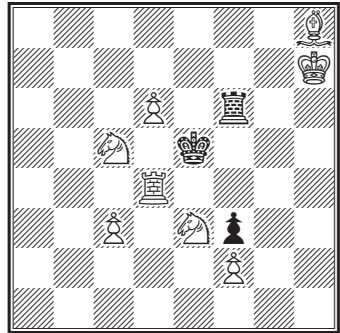


[\*]

59. Hermann Lehner in Wien

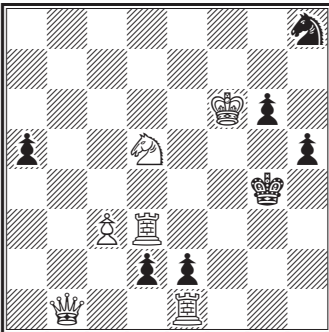


60. Hermann Lehner

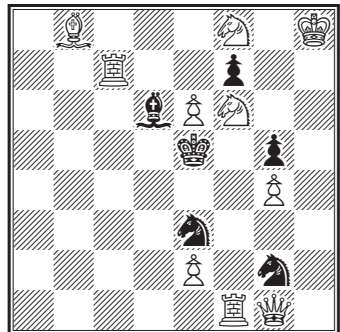


[ Lesehalle, 1875 ]

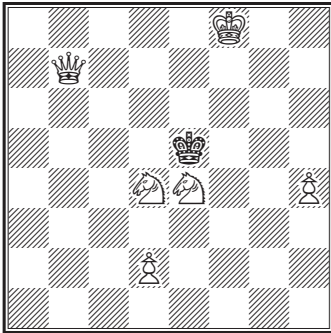
61. Hermann Lehner



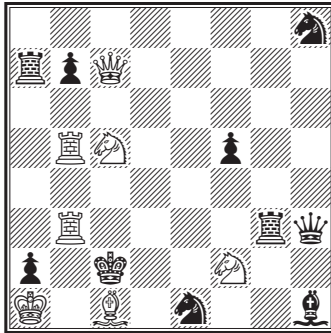
62. Rudolph L'Hermet in Magdeburg



63. G. Liberali

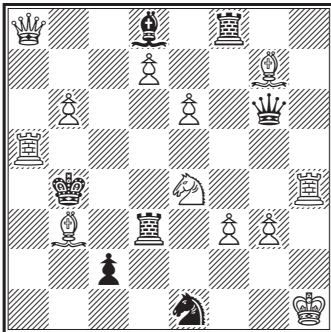


64. S. Loyd



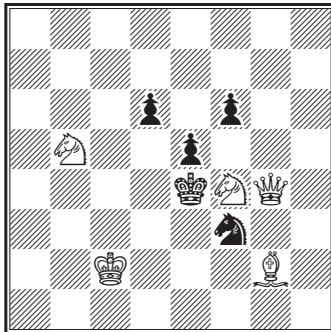
[ 3 Pr., Paris 1878 ]

65. S. Loyd



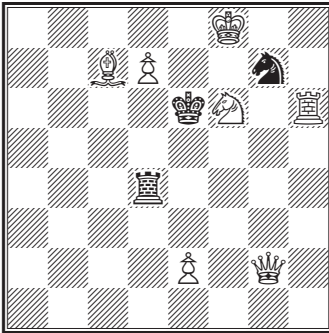
[ 1 Pr., American Chess and Problem Association, 1878 ]

66. S. Loyd

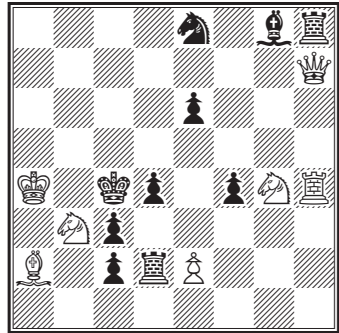


[ 91, Musical World, 1860 ]

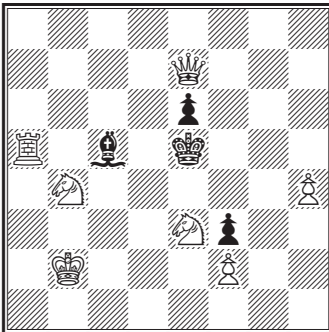
67. S. Loyd



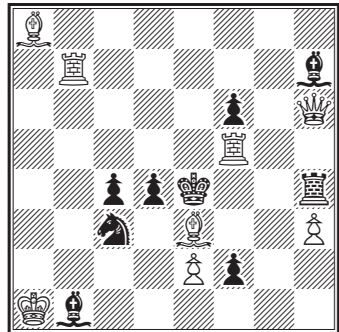
68. S. Loyd

[ 22, *Seaforth Expositor*, 1868 ]

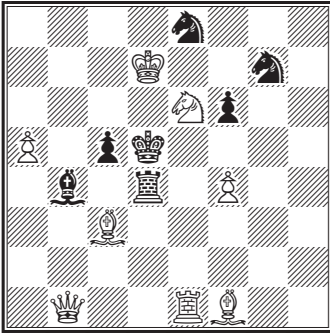
69. S. Loyd



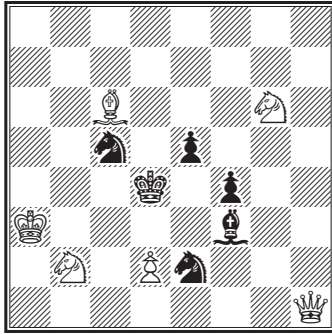
70. F. W. Martindale

[ Enigma 35, *American Union*, 1858 ]

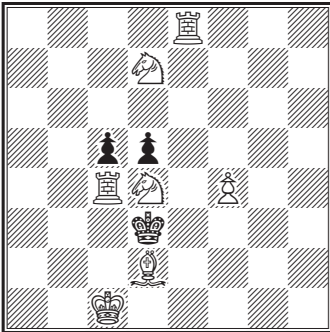
71. Melissinos in Patras



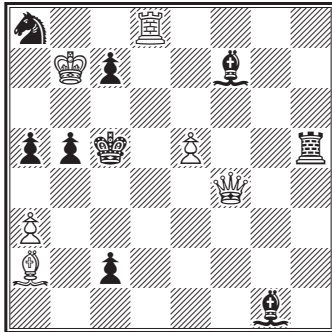
72. Heinrich Meyer



73. Heinrich Meyer

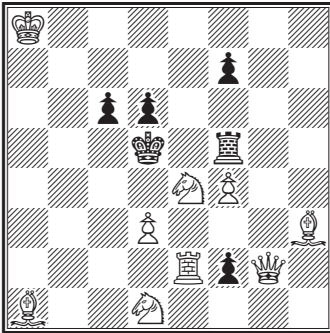


74. Heinrich Meyer

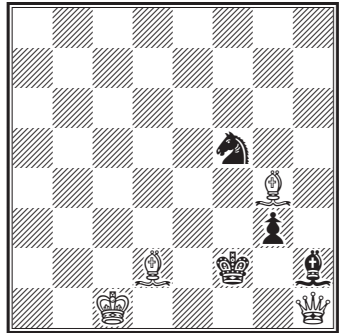


[ 846, Wiener Salonblatt, 1873? ]

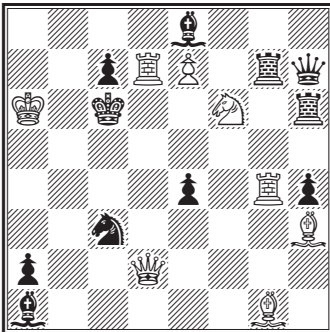
75. Heinrich Meyer



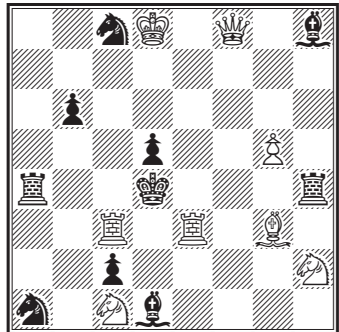
76. C. Moore



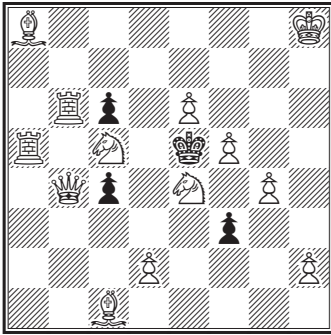
77. B. M. Neill



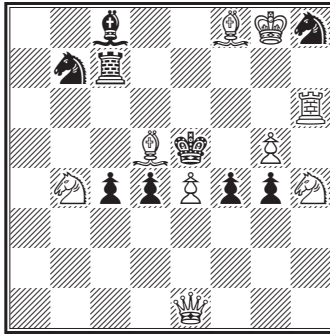
78. J. G. Nix



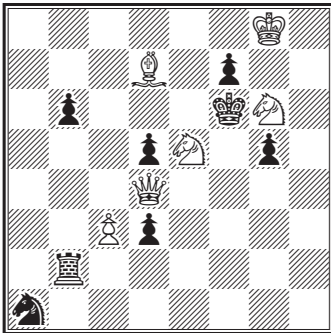
79. J. G. Nix



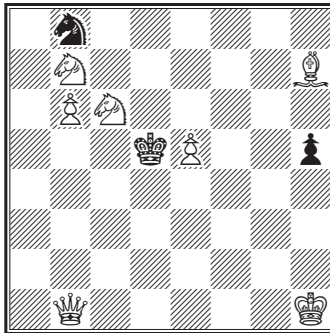
80. J. G. Nix



81. L. Noack in Breslau

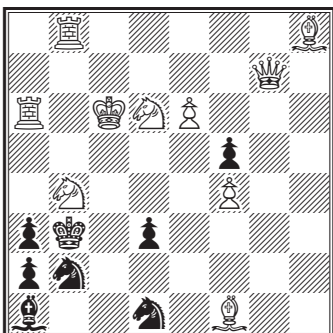


82. L. Noack

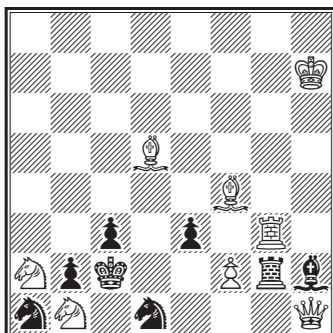




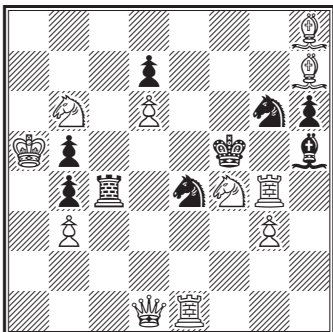
83. Pradignat



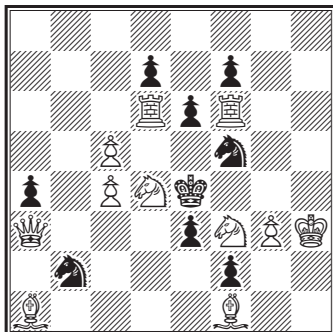
84. Pradignat



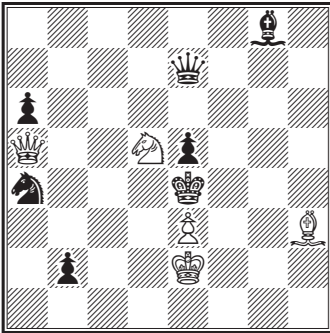
85. Pradignat



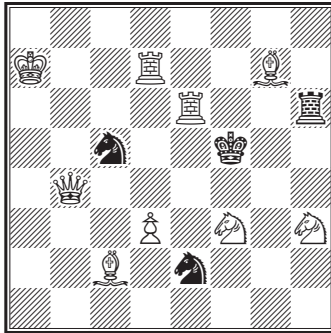
86. Pradignat



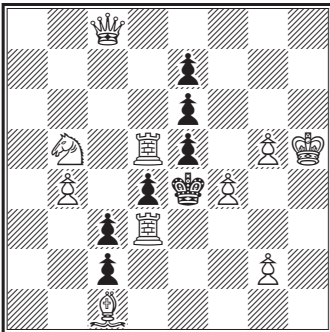
87. G. A. Reed



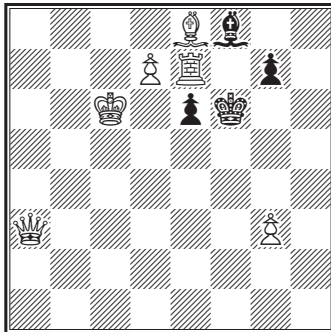
88. Robert Sahlberg in Stockholm



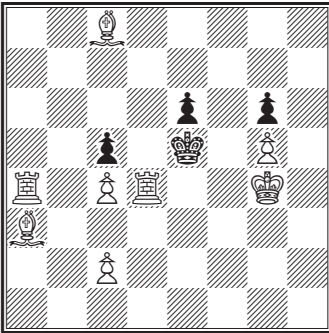
89. Nicolo Sardotsch



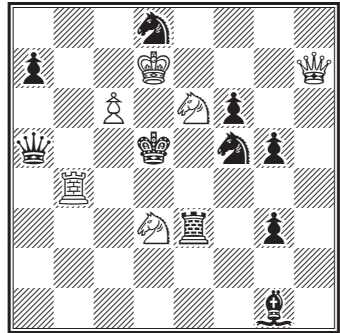
90. Nicolo Sardotsch



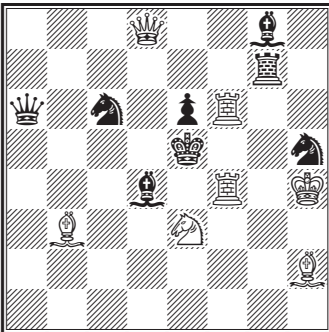
91. Nicolo Sardotsch



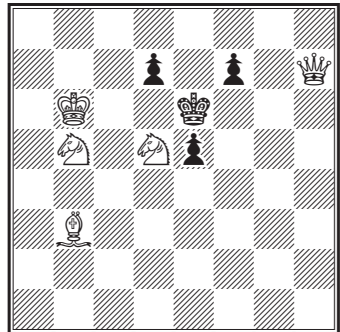
92. Frau Sophie Schett



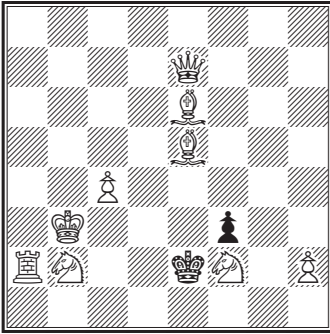
93. F. A. Schmitt



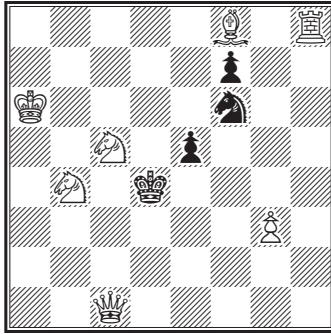
94. W. A. Shinkman



95. W. A. Shinkman

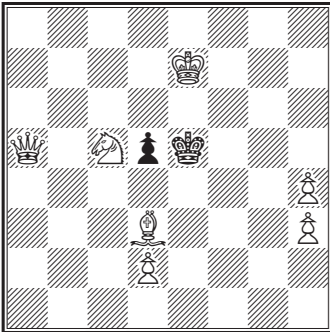


96. W. A. Shinkman

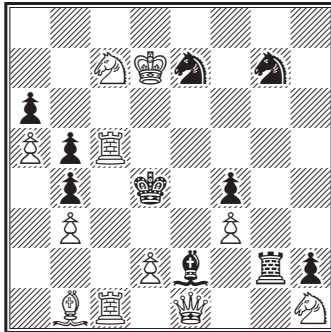


[ *Hartford Times*, 1881 ]

97. J. P. Taylor



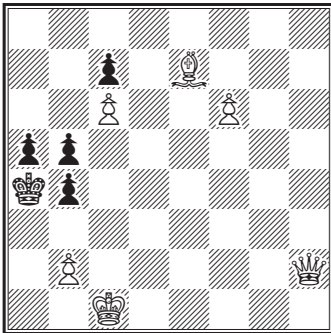
98. C. G. B. Valle



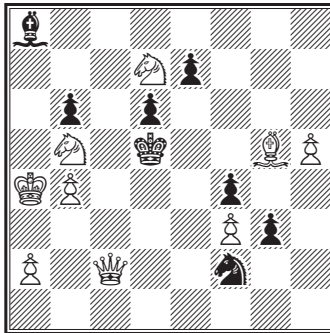


## 2. Drezüige Aufgaben

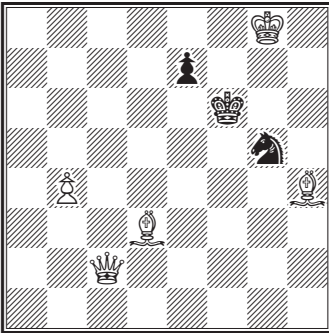
1. Aurelio Abela



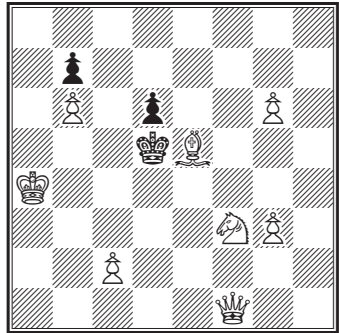
2. Aurelio Abela



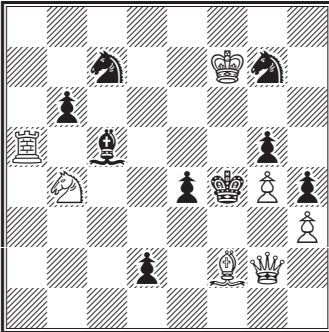
3. Aurelio Abela



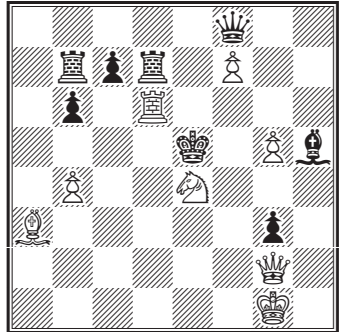
4. Conrad Bayer



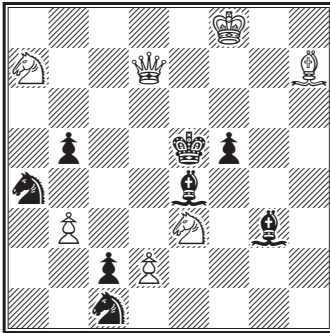
5. Conrad Bayer



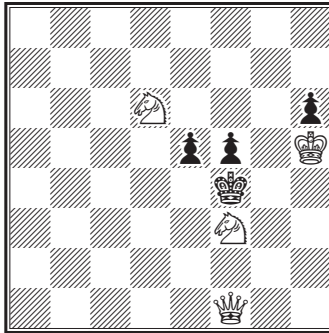
6. Conrad Bayer



7. Conrad Bayer

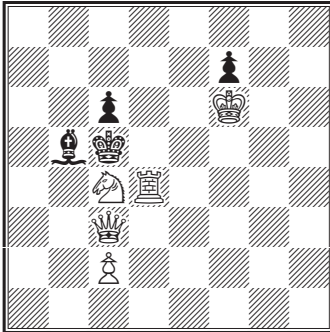


8. Conrad Bayer

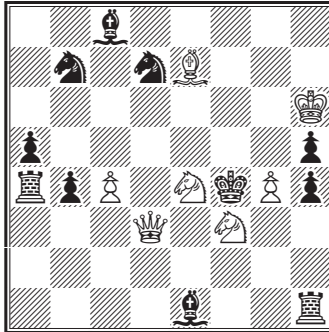


[ Régence-Turnier, 1860 ]

9. Conrad Bayer

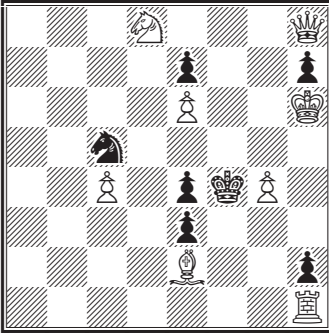


10. Johann Berger

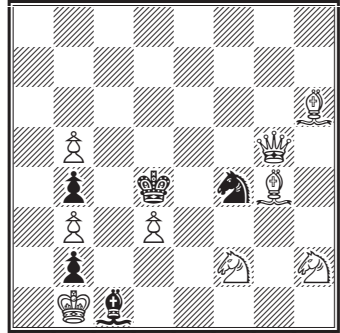




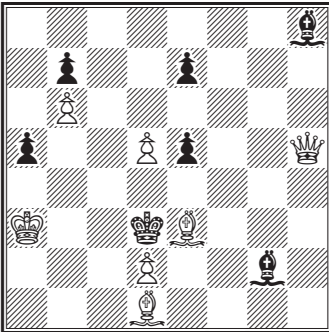
11. Johann Berger



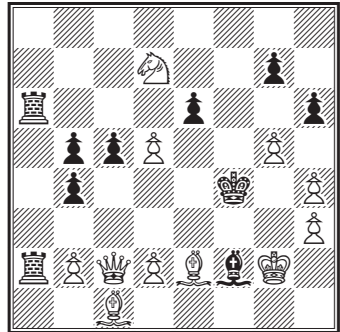
12. Johann Berger



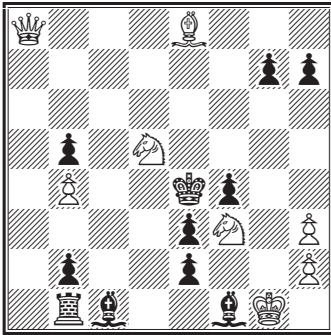
13. Johann Berger



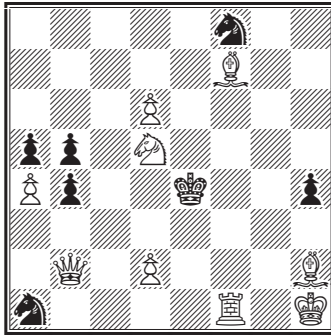
14. Johann Berger

[ *Detroit Free Press*, 1880 ]

15. Johann Berger

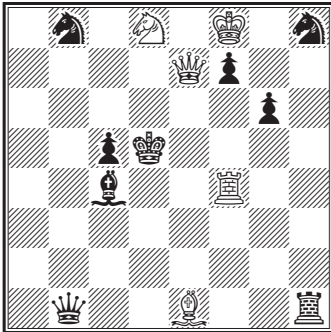


16. Johann Berger

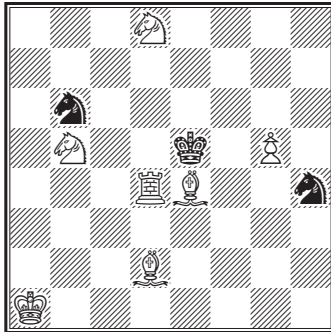


[ 1. Sendungspreis, Westdeutsche Schachbund, 1877 ]

17. Richard Beuthner

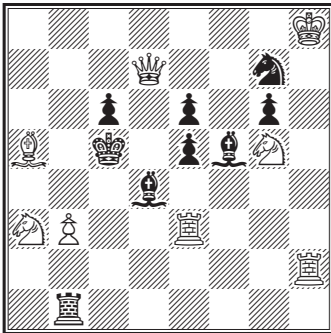


18. Oscar Blumenthal

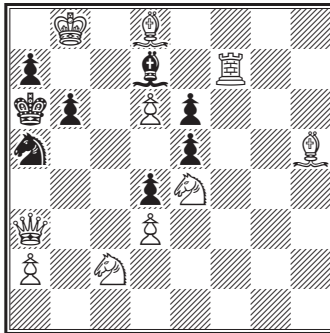




23. J. G. Campbell

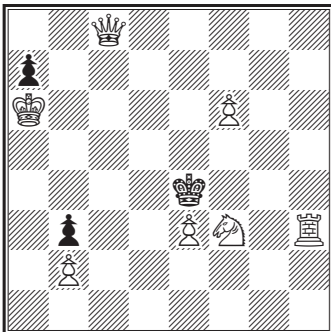


24. J. G. Campbell

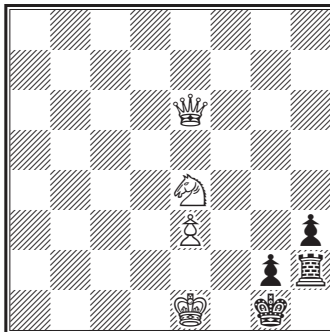


[ 893, Ill. *London News*, 1861 ]

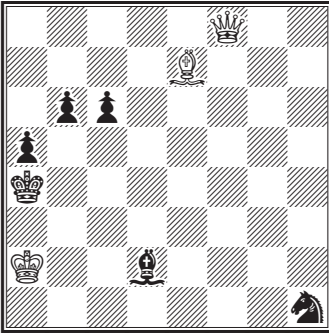
25. G. E. Carpenter



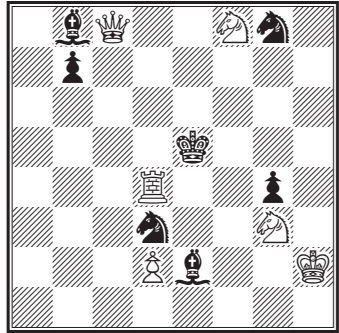
26. Chocholous und J. Dobruski



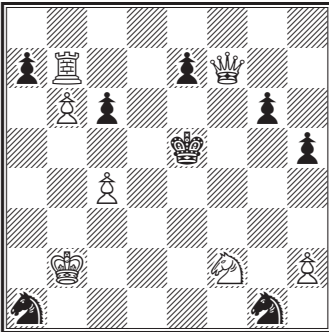
27. G. Chocholous und S. Gold



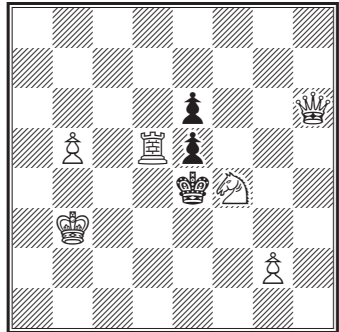
28. G. Chocholous



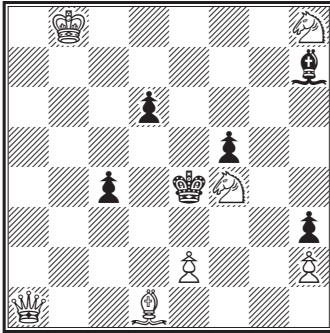
29. G. Chocholous



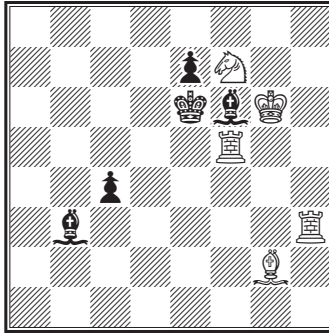
30. G. Chocholous



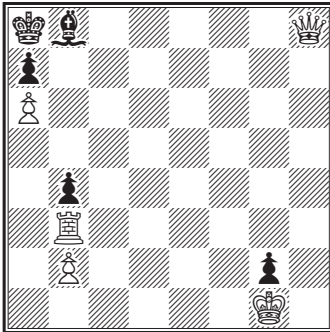
31. G. Chocholous



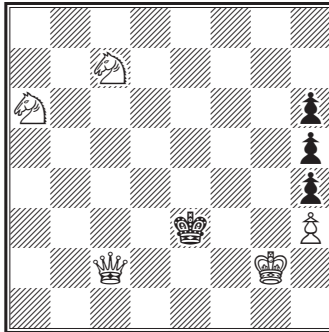
32. E. Crespi



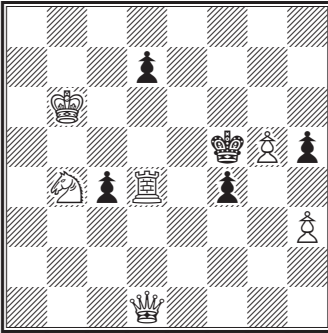
33. P. Daley



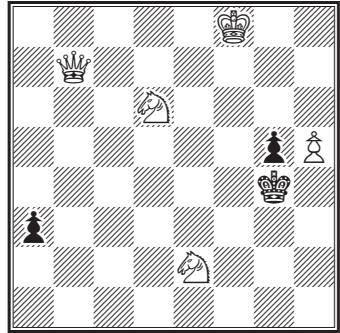
34. Johann Dobrusky



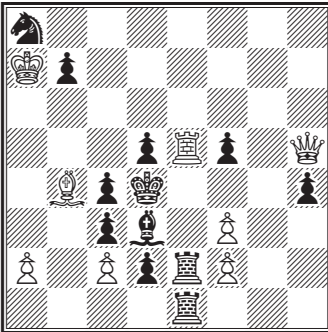
35. Johann Dobrusky



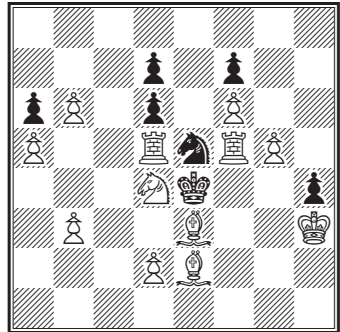
36. Fr. Dubbe in Rostock



37. Fr. Dubbe



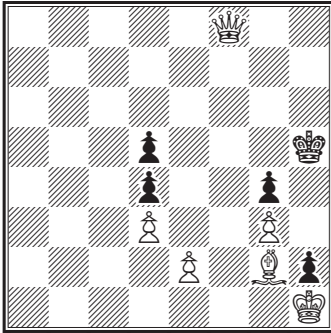
38. Fr. Dubbe



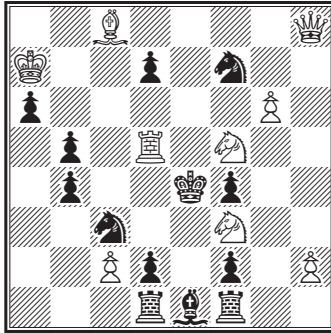
2. Pr. Berliner Problemturnier

1881

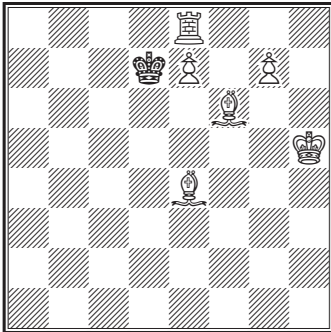
39. Fr. Dubbe



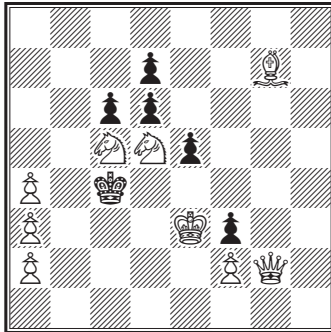
40. Fr. Dubbe



41. Moritz Ehrenstein



42. Moritz Ehrenstein

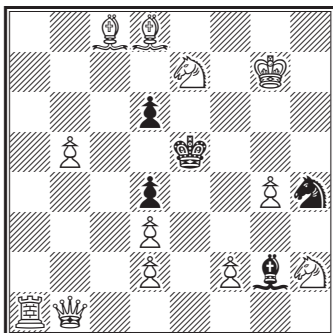


2. Pr. *Brentano's Chess Monthly*

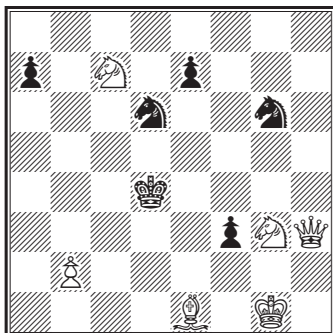
1882



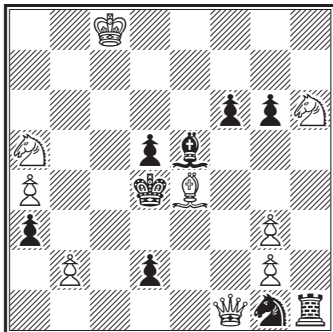
43. Moritz Ehrenstein



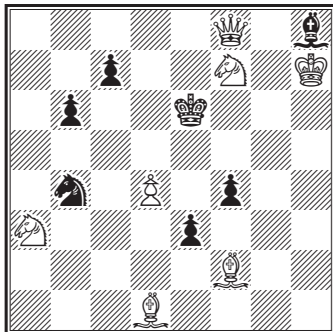
44. Moritz Ehrenstein



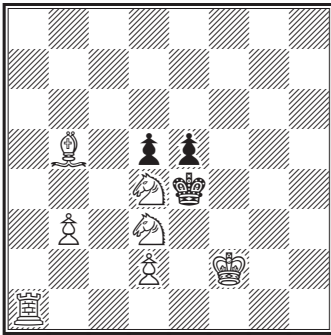
45. Einsiedler in Tyrnau



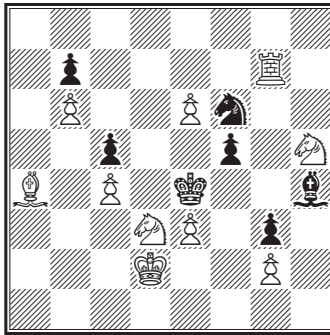
46. Einsiedler in Tyrnau



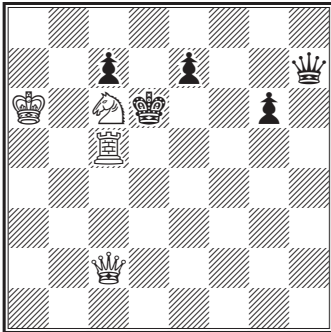
47. Einsiedler in Tyrnau



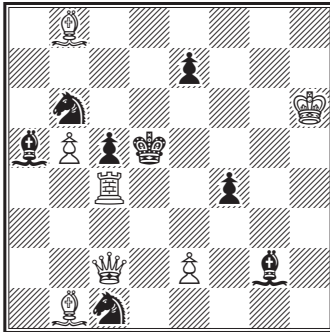
48. Einsiedler in Tyrnau



49. Hugo Faehndrich

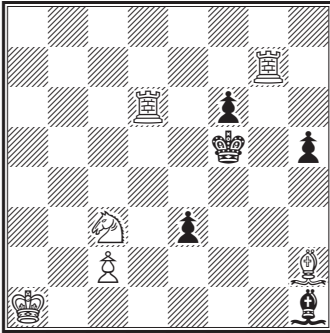


50. Fritz von Geyerstam in Upsala

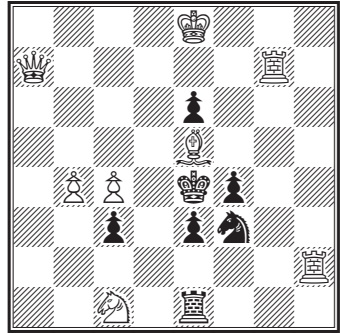


2. Pr. *Nationaltidende* 1881

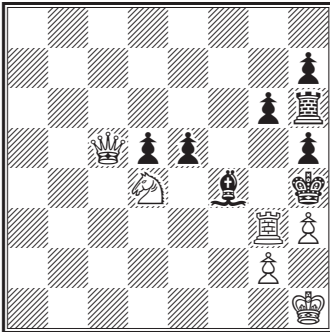
51. Fritz v. Geyerstam



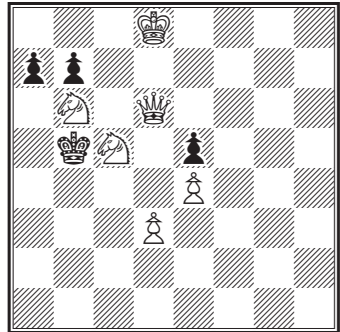
52. S. Gold



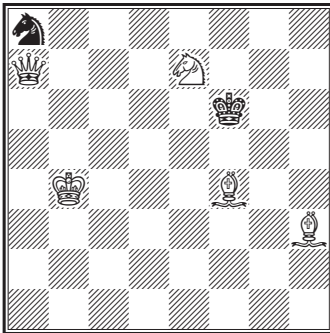
53. Hermann v. Gottschall



54. Hermann v. Gottschall

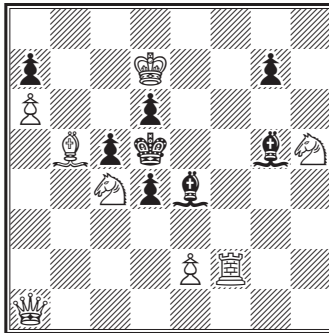


55. Hermann v. Gottschall



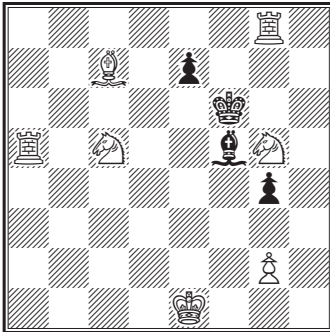
[ *Über Land und Meer*, 1861 ]

56. Healey

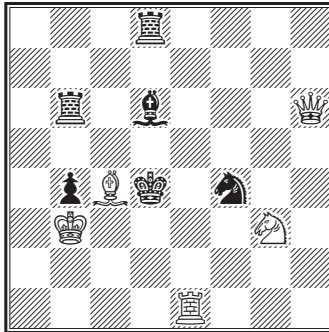


[ 1, *Chess Player's Chronicle*, 1859 ]

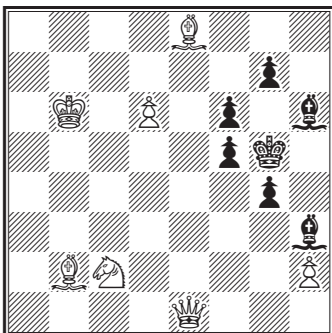
57. Healey



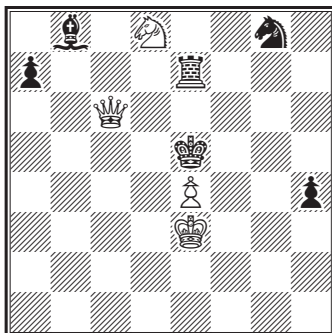
58. Healey



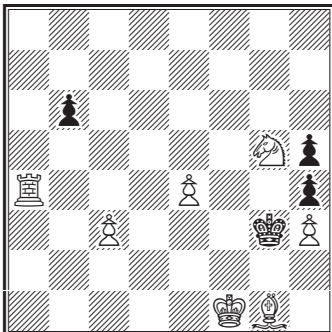
59. Joseph Heral



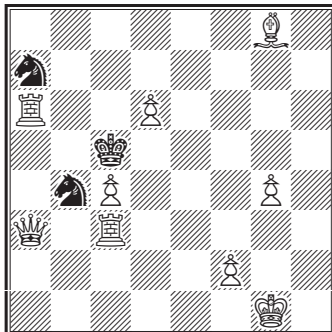
60. Hermann in Christiania



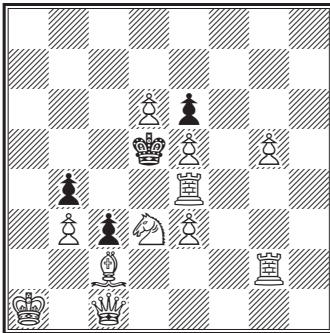
61. S. Herzsprung in Kopenhagen



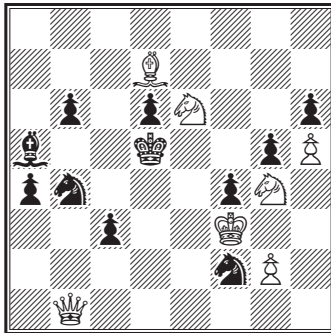
62. Albert Kauders



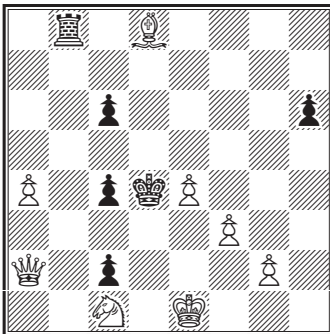
63. A. Kauders



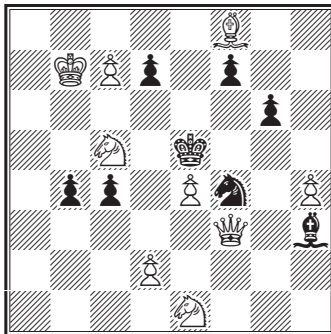
64. A. Kauders



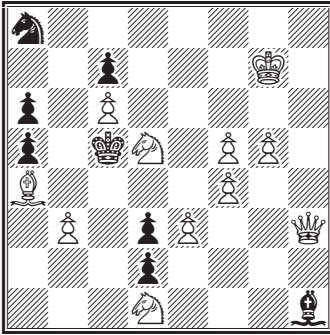
65. Fritz Kohlhase in Cassel



66. Carl Kondelik in Prag

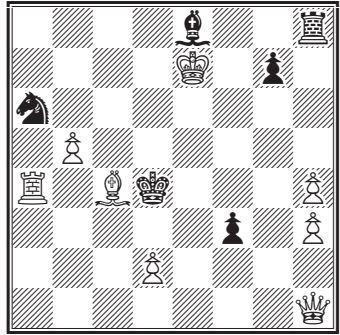


67. Carl Kondelik

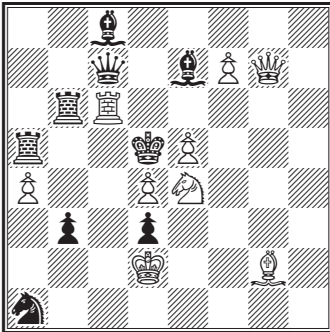


[+]

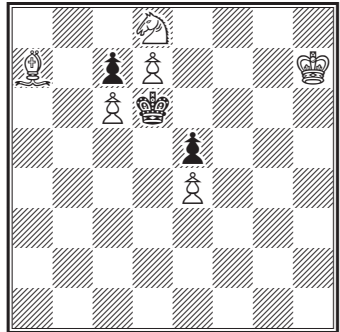
68. Carl Kondelik



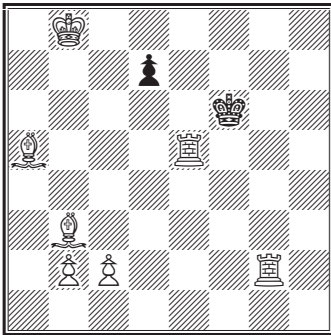
69. Max Kürschner in Nürnberg



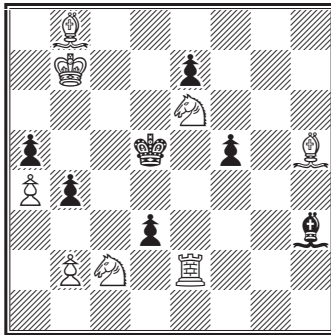
70. Max Kürschner



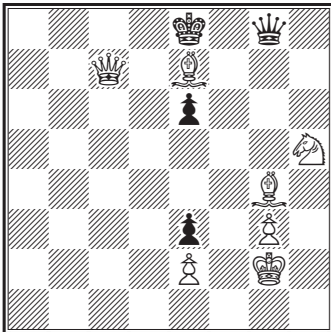
71. Max Kürschner



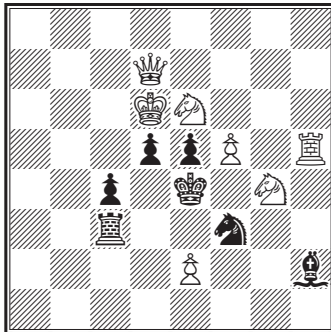
72. Max Kürschner



73. H. Landesmann in Wien

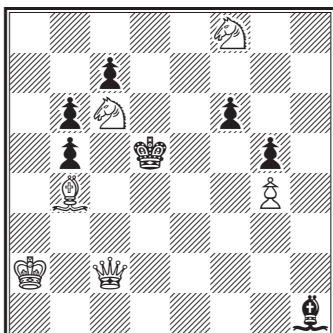


74. A. Lansquenet

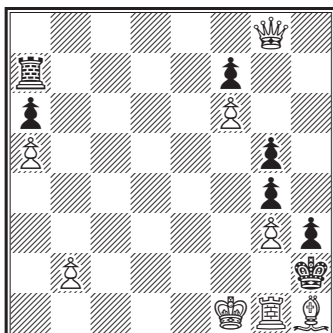




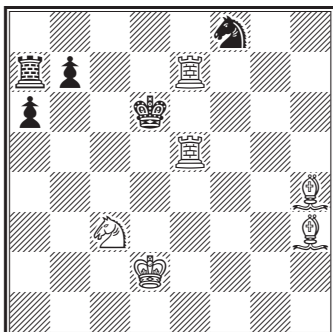
75. B. G. Laws



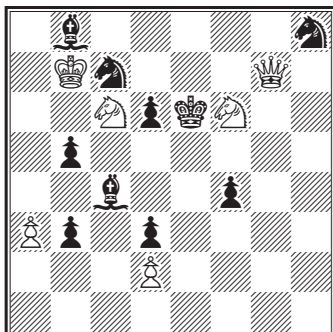
76. B. G. Laws



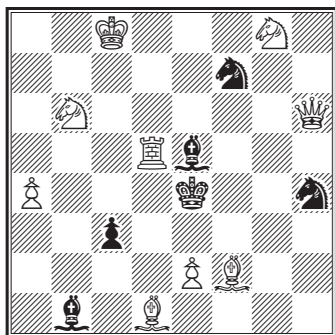
77. Hermann Lehner



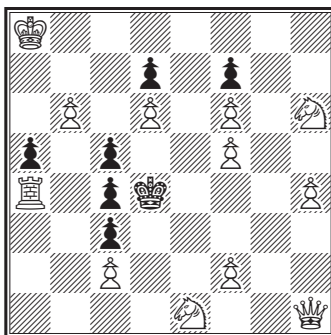
78. Hermann Lehner



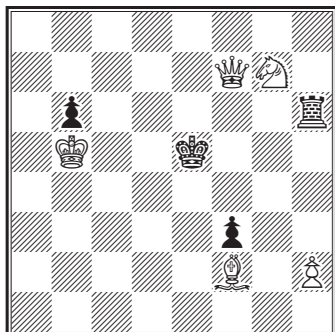
79. Leprettel in Marseille



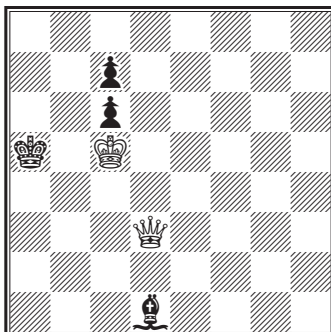
80. R. L'hermet in Magdeburg



81. W. Lintz in Darmstadt

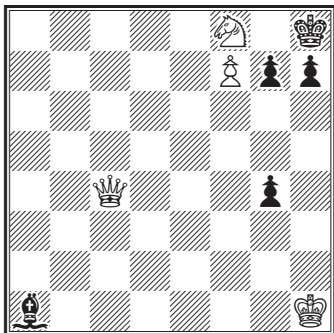


82. S. Loyd

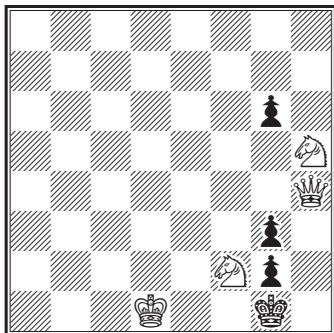


[ *Detroit Free Press*, 1877 ]

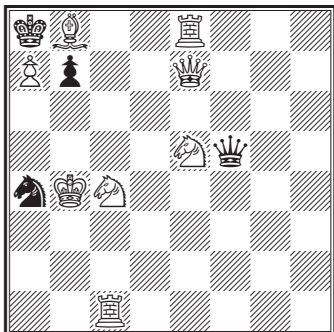
83. S. Loyd

[ *Illustrierte Zeitung*, 1869 ]

84. S. Loyd

[ *Detroit Free Press*, 1880 ]

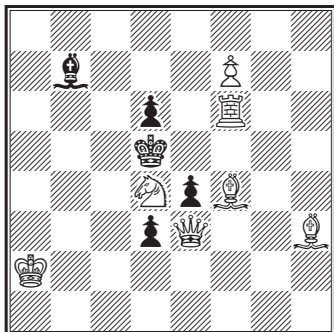
85. S. Loyd



[\*]

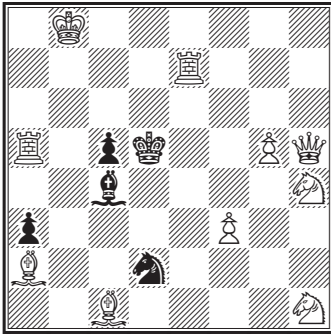
[ 21, *Seaforth Expositor*, 1868 ]

86. S. Loyd

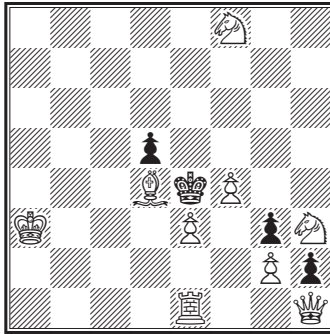


[ 3. Pr., Fifth American Chess Congress, 1880 ]

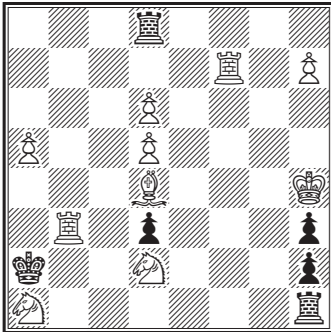
87. Arthur Mackenzie



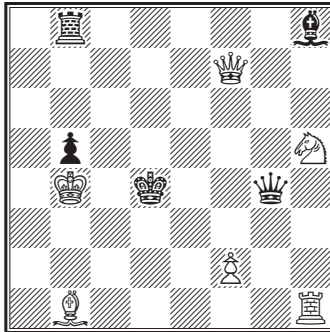
88. Heinrich Meyer



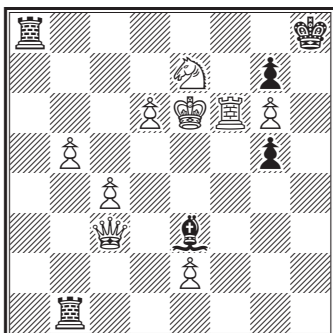
89. Heinrich Meyer



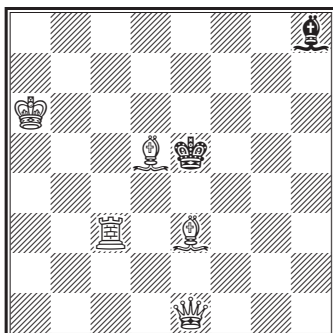
90. Johann Minckwitz



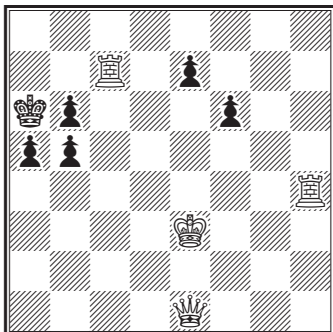
91. F. Möller in Ahlten



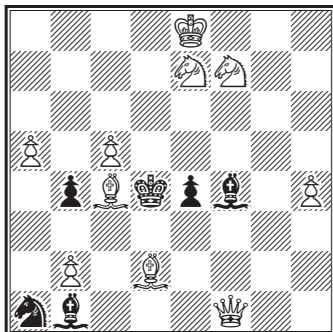
92. C. Moore



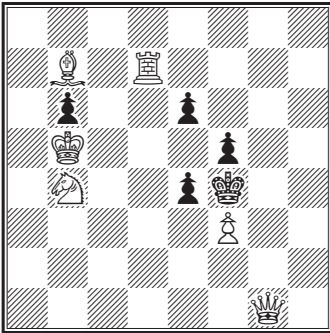
93. C. Moore



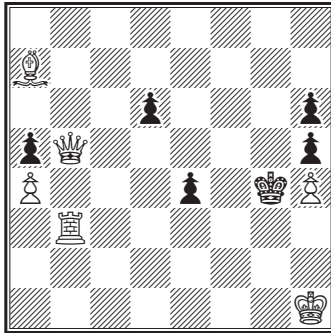
94. M. Nielsen in Kopenhagen



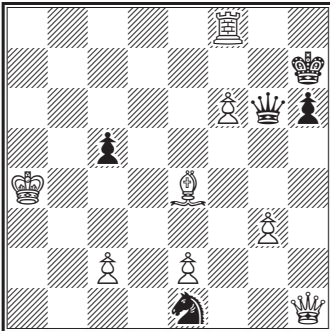
95. J. G. Nix



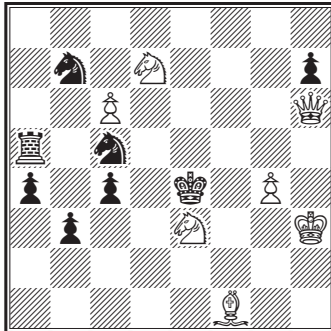
96. J. G. Nix



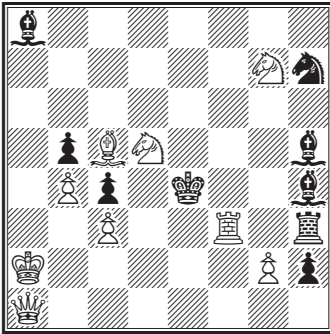
97. L. Noack



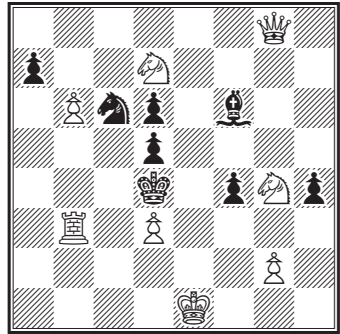
98. L. Noack



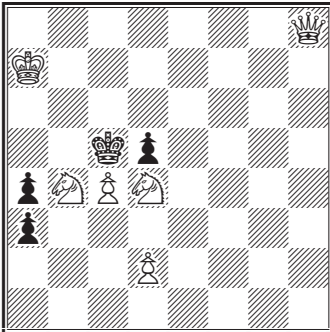
99. Johann Obermann in Leipzig



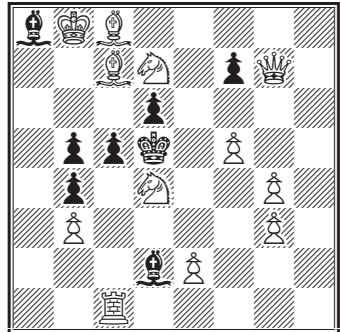
100. J. Obermann



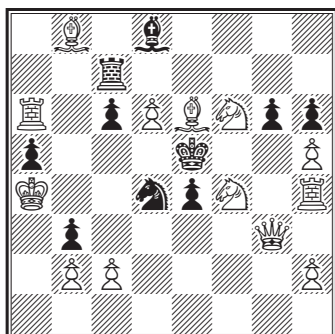
101. G. Orsini in Livorno



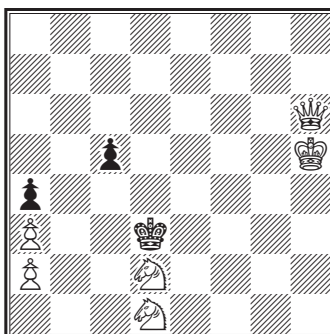
102. Pradignat



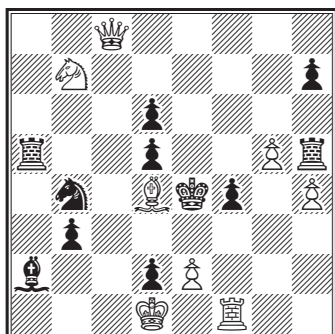
103. Robert Sahlberg



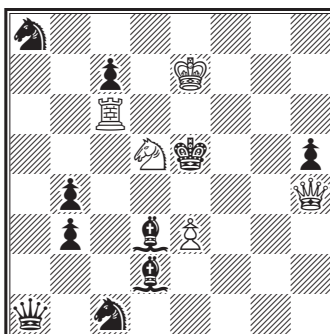
104. Nicolo Sardotsch in Triest



105. Nicolo Sardotsch

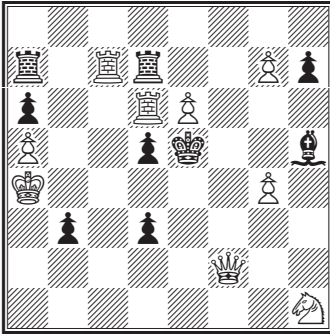


106. Nicolo Sardotsch

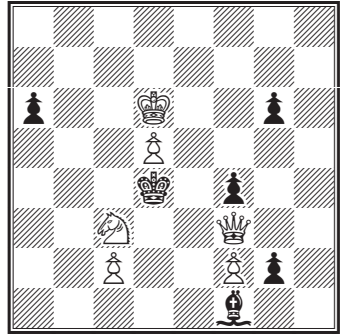




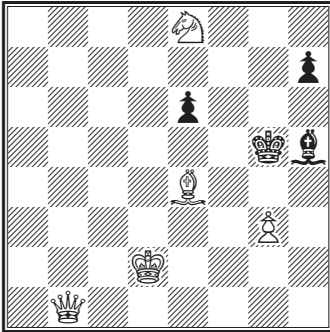
107. Nicolò Sardotsch



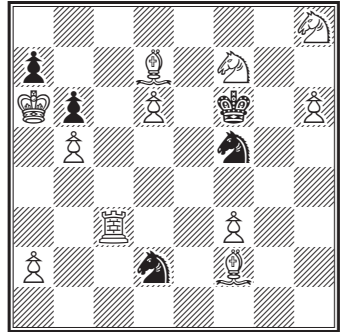
108. Frau Sophie Schett



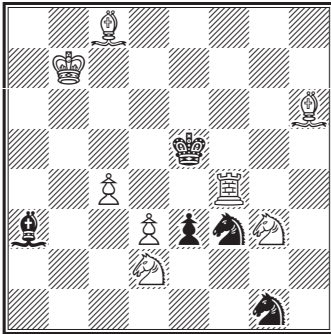
109. Fr. Schrüfer



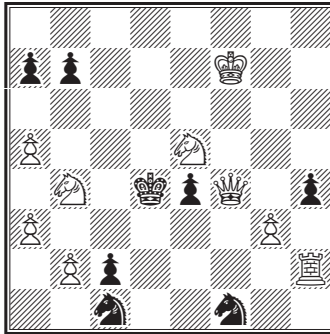
110. Fr. Schrüfer



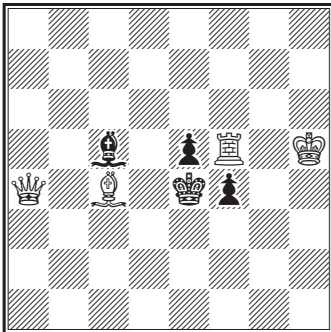
111. Fr. Schrüfer



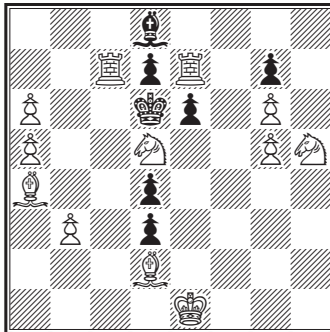
112. Fr. Schrüfer



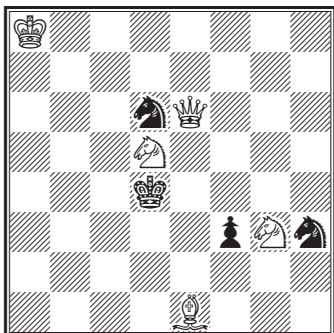
113. Fr. Schrüfer



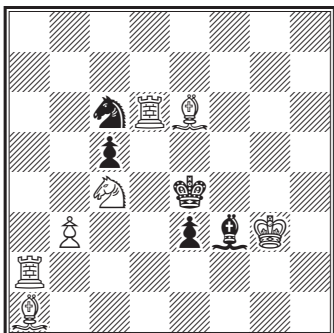
114. Fr. Schrüfer



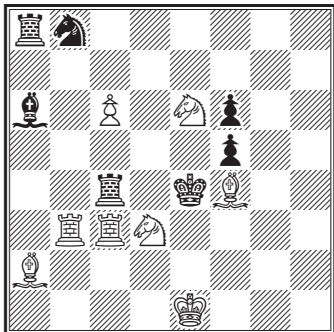
115. Fr. Schrüfer



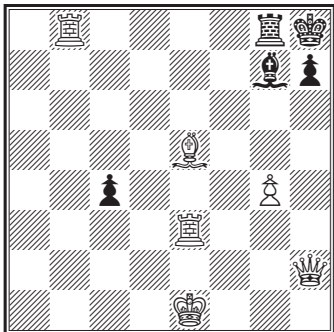
116. Fr. Schrüfer



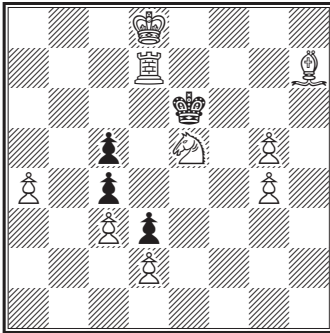
117. Fr. Schrüfer



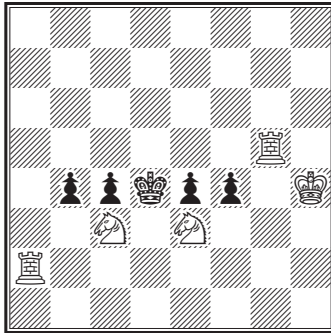
118. Fr. Schrüfer



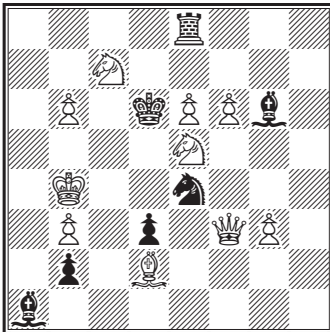
119. Fr. Schrüfer



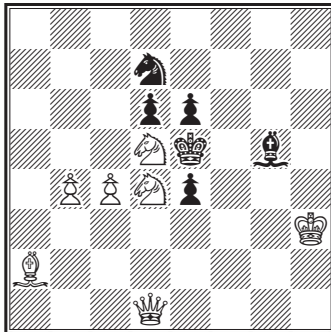
120. Fr. Schrüfer



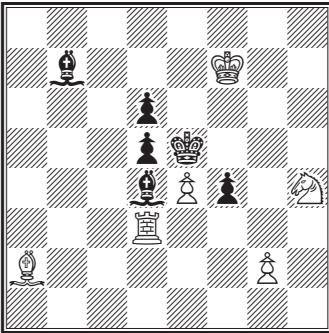
121. Fr. Schrüfer



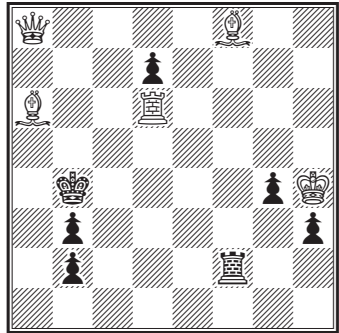
122. Fr. Schrüfer



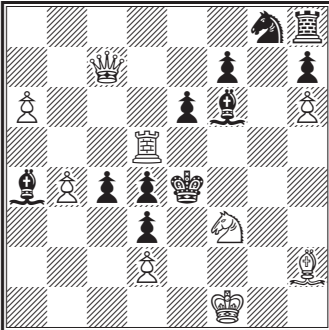
123. Fr. Schrüfer



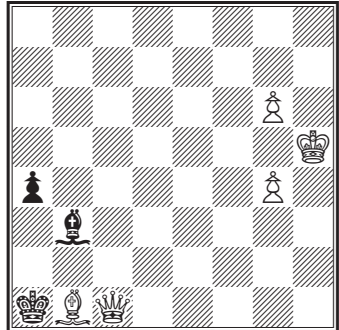
124. Constantin Schwede



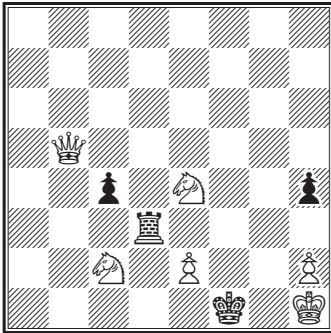
125. Constantin Schwede



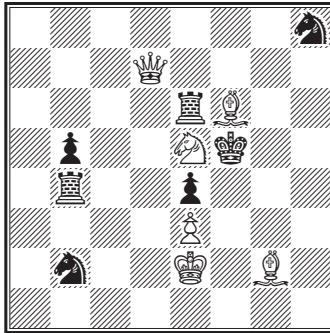
126. W. A. Shinkman



127. W. A. Shinkman

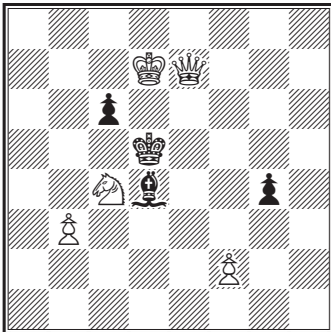


128. C. G. B. Valle

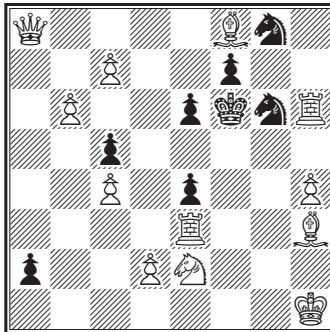


[ *Huddersfield College Magazine*  
Turnier, 1880]

129. C. G. B. Valle

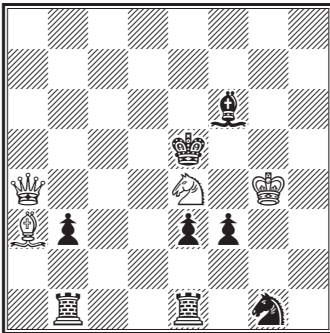


130. Wainwright



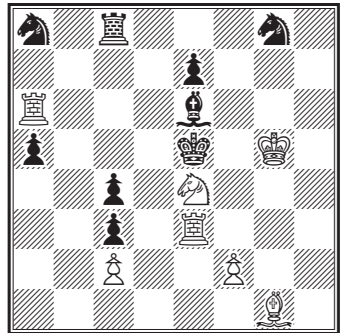
### 3. Vierzügige Aufgaben

1. Conrad Bayer



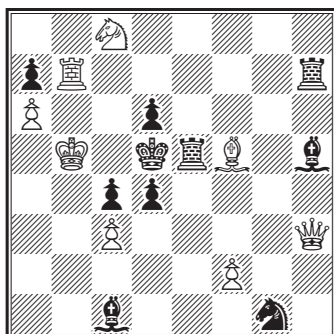
[ 2. Pr., *Palamède*-Turnier, 1865 ]

2. Conrad Bayer



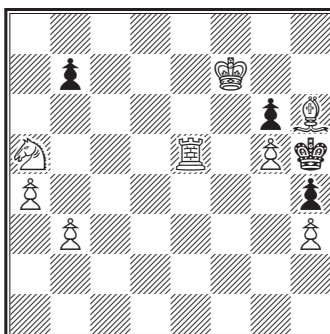
[ 1022, *Schachzeitung*, 1859 ]

3. Conrad Bayer



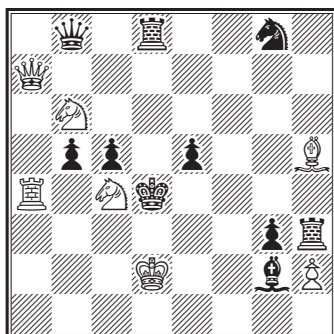
[ 841, *Schachzeitung*, 1857 ]

4. Conrad Bayer

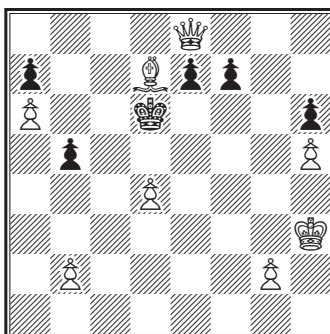


[ 592, *Schachzeitung*, 1854 ]

5. Conrad Bayer

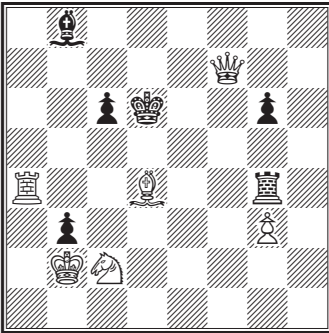


6. Conrad Bayer

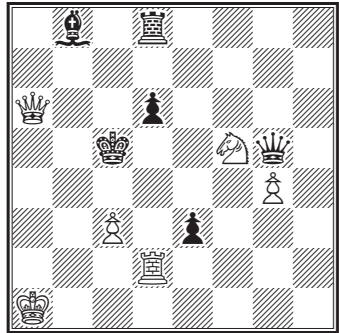




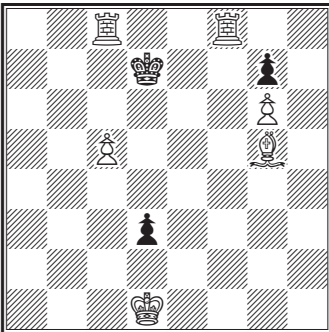
7. Conrad Bayer



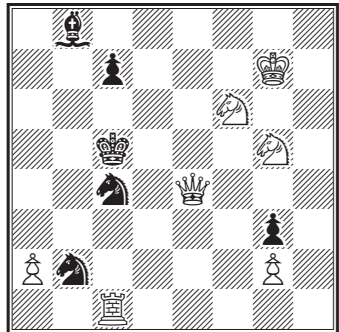
8. Conrad Bayer



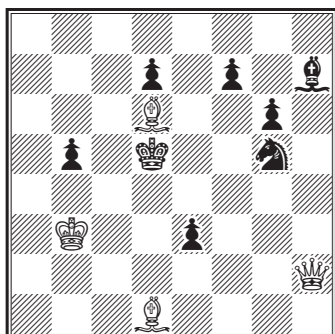
9. Conrad Bayer



10. Johann Berger

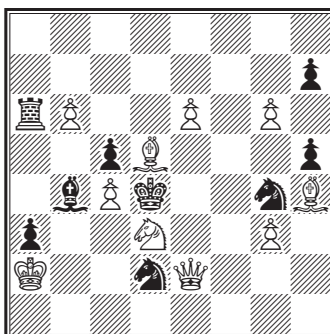


11. Johann Berger



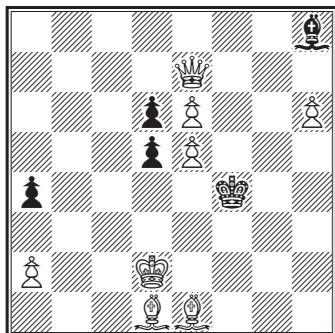
[ Wiener Salonblatt, 1874 ]

12. Johann Berger

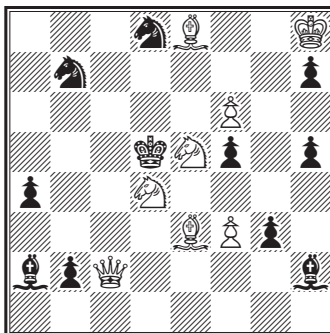


[\*]

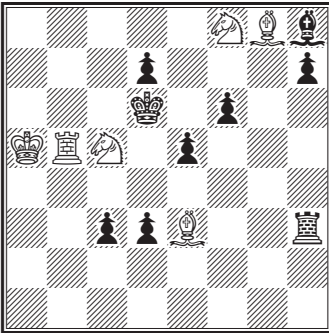
13. Johann Berger



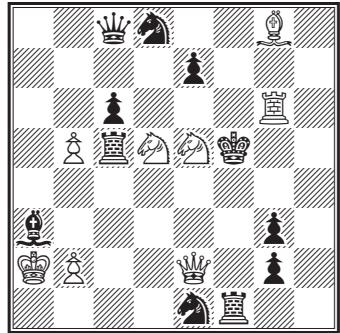
14. Johann Berger



15. Robert Braune

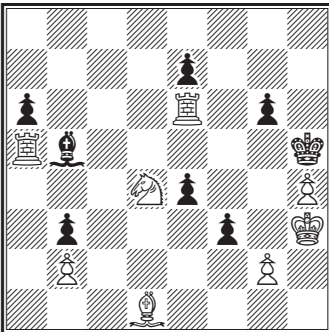


16. Robert Braune

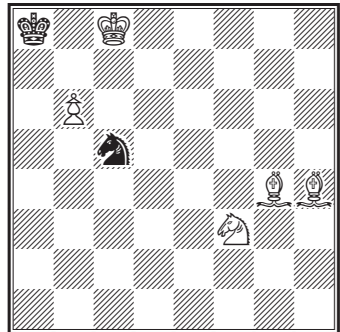


Specialpr., *Detroit Free Press*, 1880

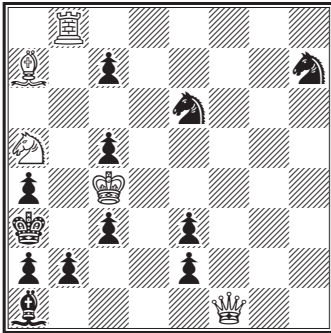
17. G. N. Cheney



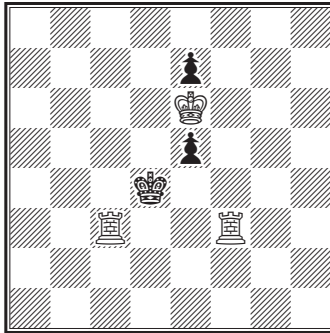
18. G. N. Cheney



19. G. N. Cheney

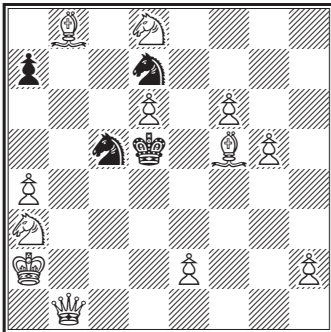


20. E. B. Cook

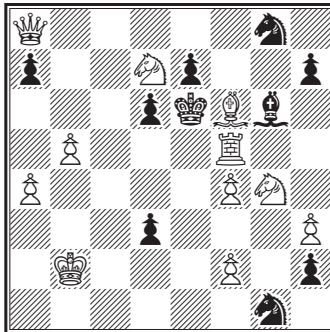


[\*]

21. Johann Dobrusky



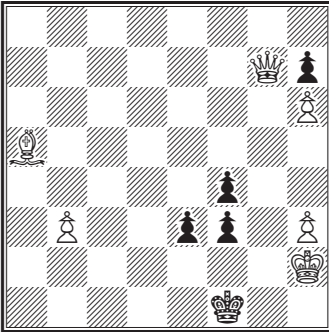
22. Fr. Dubbe



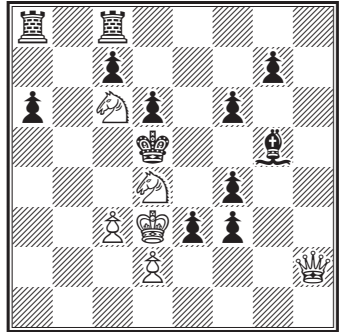
1. Pr., *Brentano's Chess Monthly*, 1882

1. Pr., Berliner Problemturnier, 1881

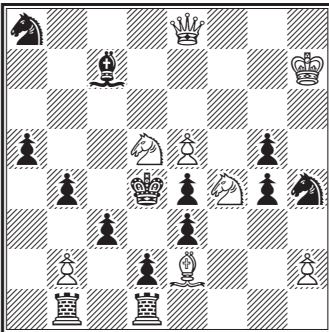
23. Fr. Dubbe



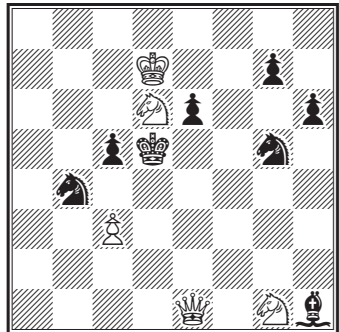
24. Moritz Ehrenstein



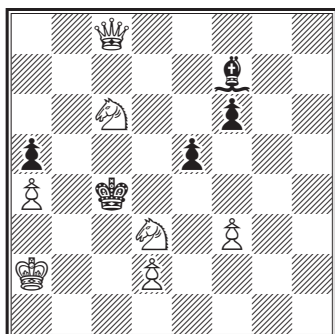
25. Moritz Ehrenstein



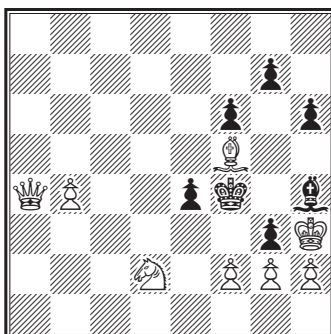
26. Frank Healey



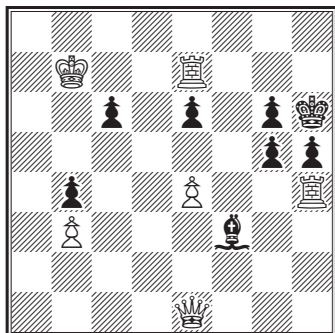
27. Herlin



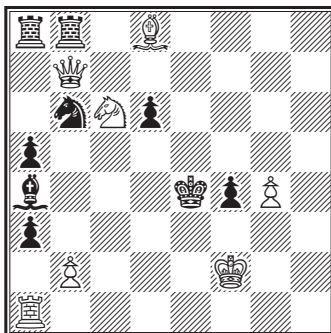
28. Albert Kauders



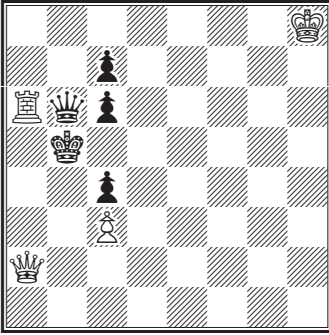
29. Ph. Klett



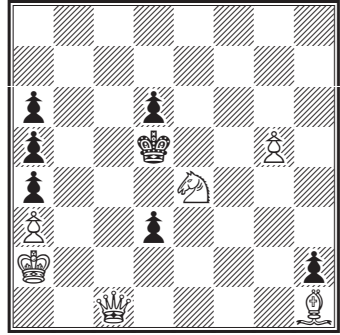
30. Max Kürschner in Nürnberg



31. Hermann Lehner

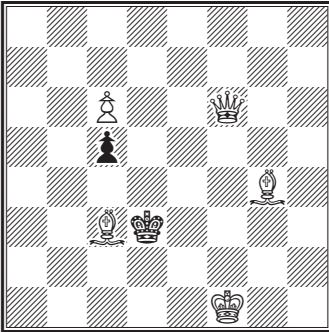


32. S. Loyd



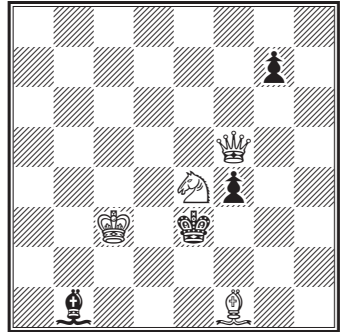
[ *Detroit Free Press*, 1880 ]

33. S. Loyd



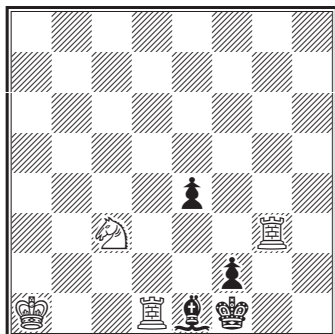
[ *Londoner Schachkongress*, 1866 ]

34. S. Loyd



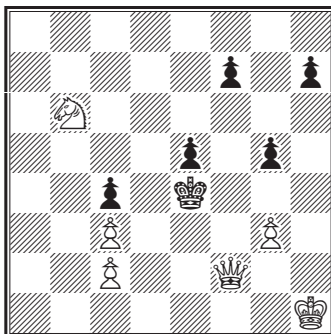
[ 418, *American Chess-Nuts*, 1868 ]

35. S. Loyd



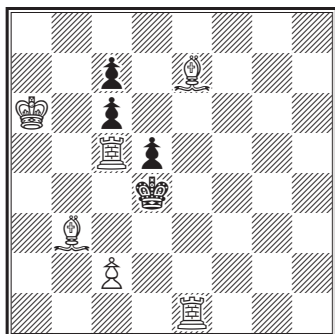
[ 11, *Chess Monthly*, 1857 ]

36. S. Loyd



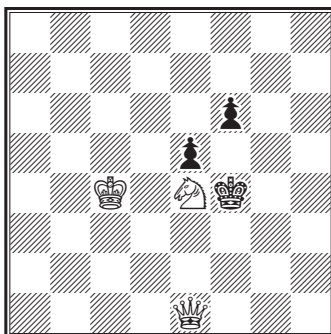
[ S ]

37. S. Loyd



[ 423, *New York Albion*, 1857 ]

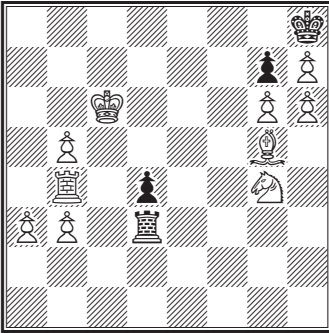
38. S. Loyd



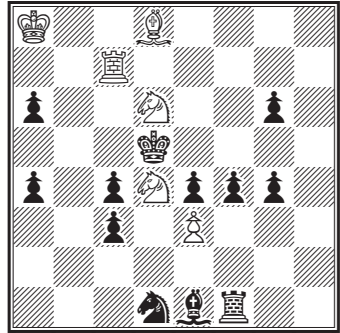
[ v 6, *New York Clipper*, 1856 ]



39. Heinrich Meyer

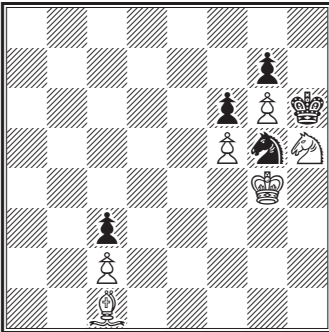


40. L. Noack

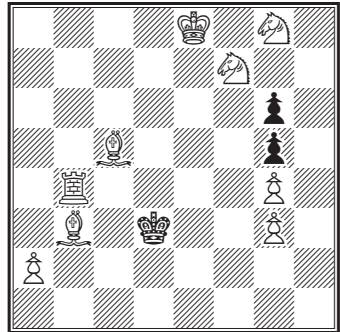


1. Pr., Berliner Problemturnier, 1881

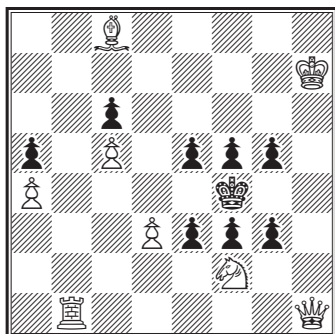
41. E. Pradignat



42. E. Pradignat

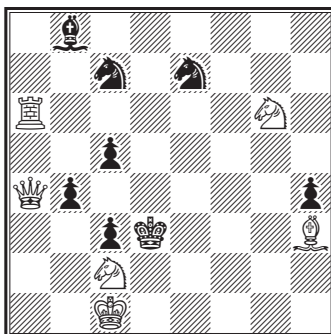


43. E. Pradignat



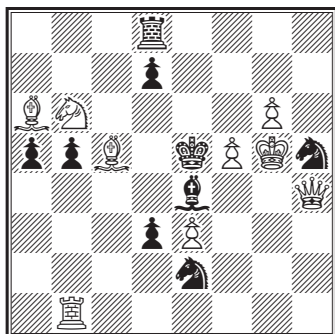
2. Pr., Berliner Problemturnier, 1881

44. Fr. Schrüfer

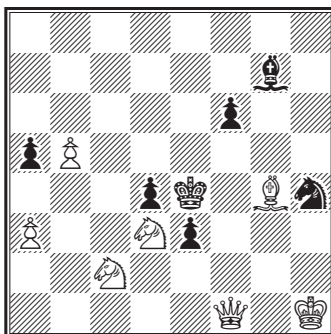


2. Pr., *Brentano's Chess Monthly*, 1882

45. Fr. Schrüfer

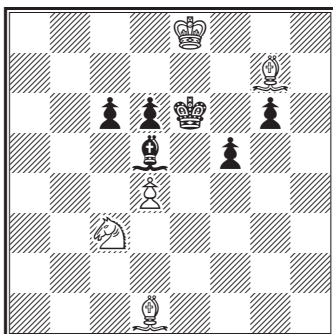


46. Fr. Schrüfer

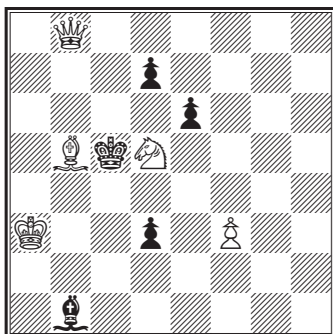


1. Pr., Italien. Problemturnier, 1876

47. Fr. Schrüfer

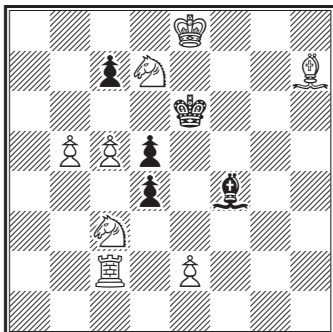


48. Fr. Schrüfer

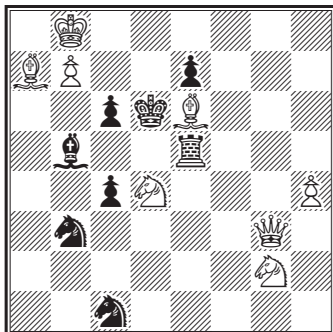


[\*]

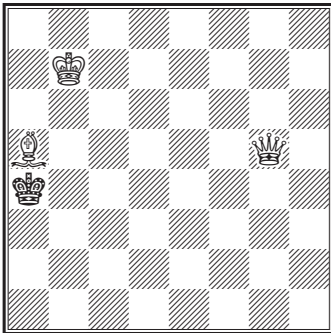
49. Fr. Schrüfer



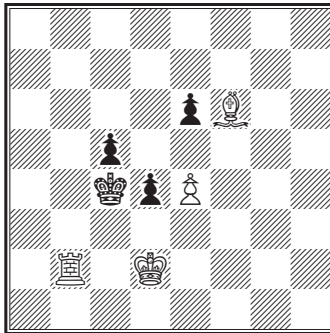
50. Fr. Schrüfer



51. W. A. Shinkman

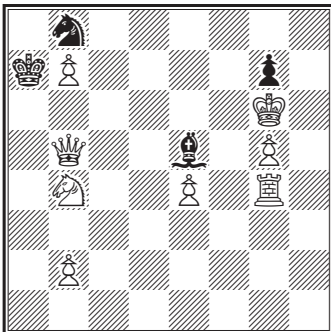


52. W. A. Shinkman

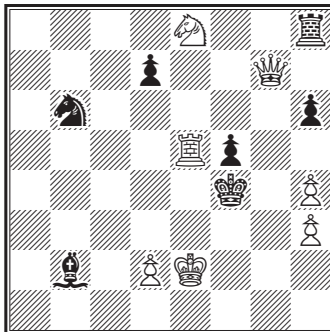


[ *Western Advertiser*, 1872 ]

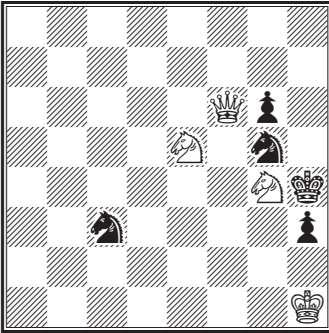
53. C. G. B. Valle



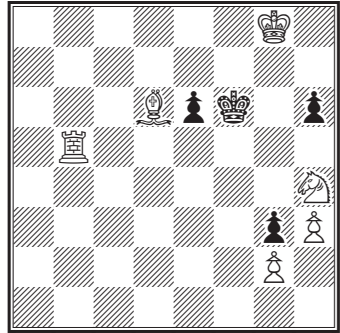
54. Rudolph Willmers



55. R. Willmers

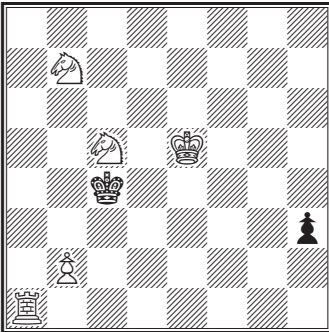


56. R. Willmers

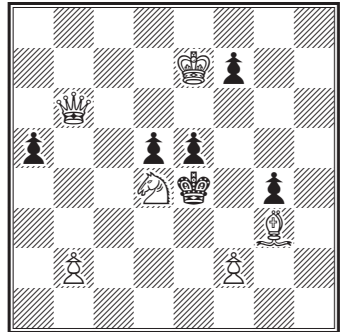


[\*]

57. R. Willmers

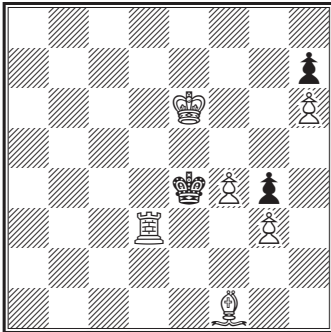
[ 985, *Schachzeitung*, 1859 ]

58. R. Willmers

[ 974, *Schachzeitung*, 1859 ]

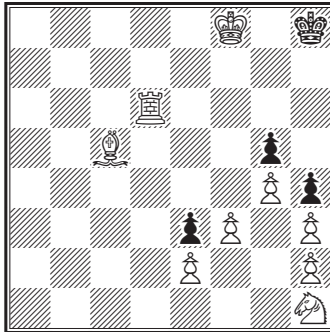
## 4. Bedingungsaufgaben

1. Alfred Herz



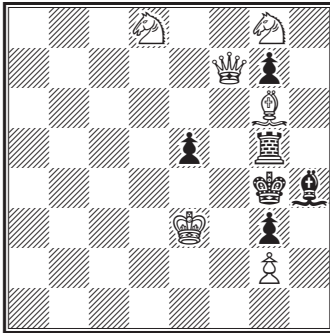
Weiß setzt spätestens mit dem 7. Zuge Matt, ohne Thurm oder Bauer zu ziehn.

2. Horwitz



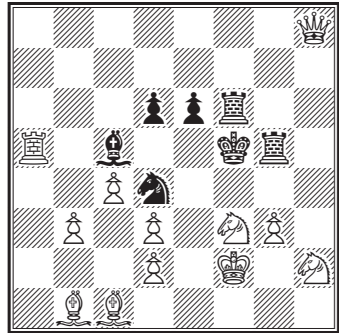
Weiß setzt in 10 Zügen mit dem Springer Matt, ohne einen Bauer zu ziehn oder zu schlagen.

## 3. Horwitz



Weiß soll mit dem Springer d8 mattsetzen, ohne einen feindlichen Stein zu schlagen. [§]

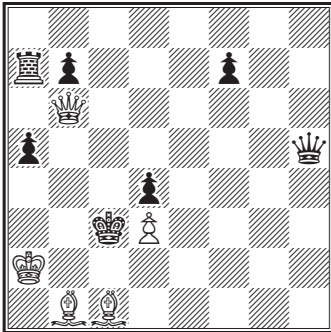
## 4. Heinrich Meyer



Weiß setzt mit dem 6. Zuge Matt, bei jedem Zuge Schach bietend und Schwarz zwingend, dies ebenfalls mindestens bei den ersten 4 Zügen zu thun, im Fall Schwarz nicht früher matt gesetzt sein will.

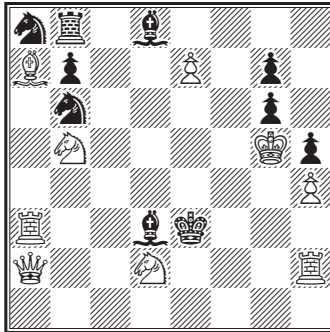
## 5. Selbstmatte

1. Robert Braune



Selbstmatt in 2. Zügen

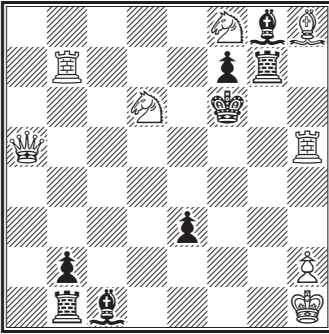
2. C. A. Gilberg



Selbstmatt in 2. Zügen

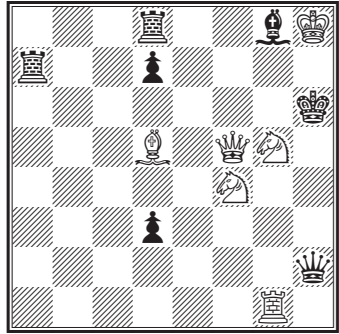


3. C. A. Gilberg



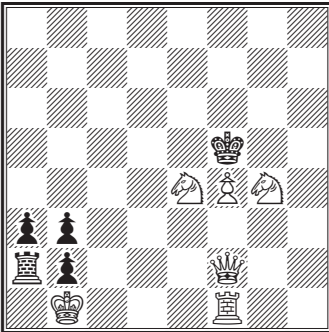
Selbstmatt in 2. Zügen

4. W. A. Shinkman



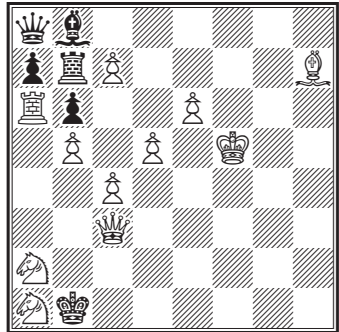
Selbstmatt in 2. Zügen

5. W. A. Shinkman



Selbstmatt in 2. Zügen

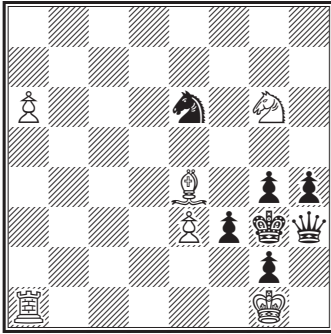
6. W. A. Shinkman



Selbstmatt in 3. Zügen

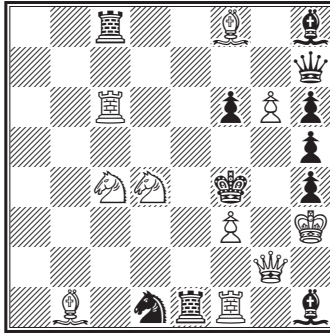
[ *Strategie*, 1877 ]

## 7. Johann Dobrusky in Prag



Selbstmatt in 3. Zügen

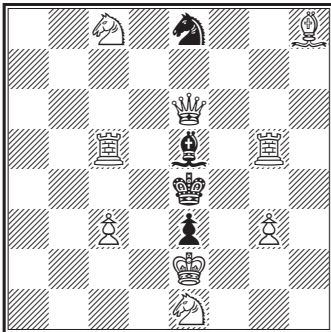
## 8. S. Loyd



Selbstmatt in 3. Zügen

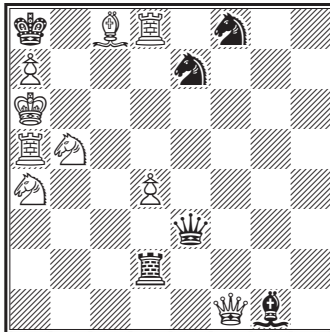
[ *American Union*, 1858 ]

## 9. Karl Kondelik



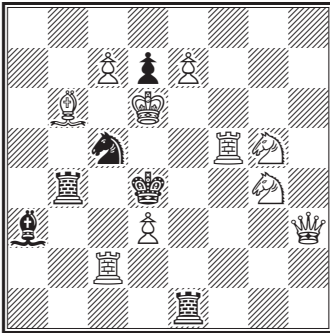
Selbstmatt in 5. Zügen

## 10. Heinrich Meyer



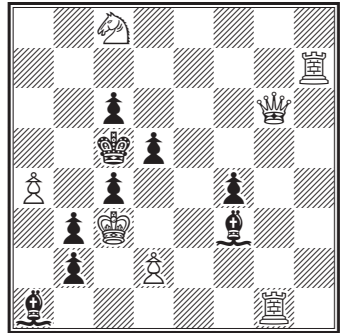
Selbstmatt in 5. Zügen

11. Nadebaum in Tessin



Selbstmatt in 3. Zügen

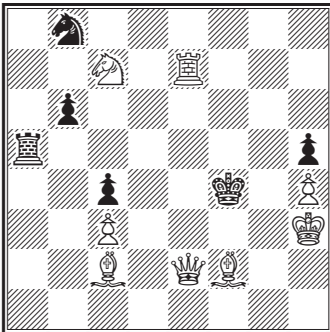
12. Nadebaum



Selbstmatt in 4. Zügen

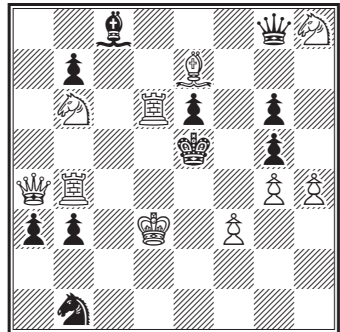
[ Deutsche Schachzeitung, 1874 ]

13. Nadebaum



Selbstmatt in 4. Zügen

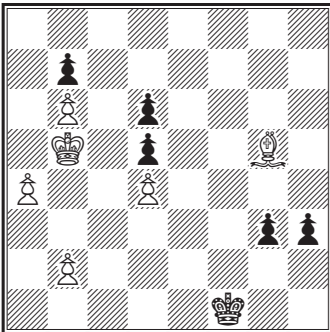
14. Nadebaum



Selbstmatt in 4. Zügen

## 6. Studien

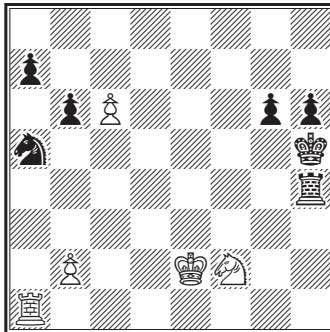
1. J. G. Campbell



Weiss zieht und macht das Spiel  
unentschieden

[ 13, *Chess Player's Chronicle*, 1855 ]

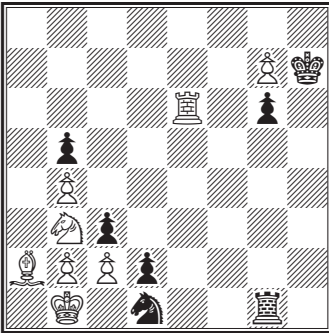
2. Coster



Weiss zieht und gewinnt

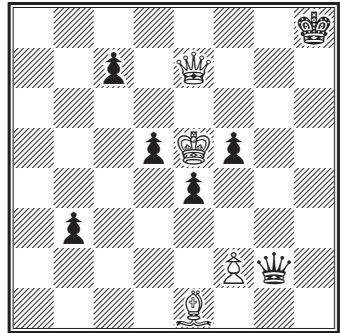
[ 1. Pr., *Society*, 1881 ]

## 3. J. Dufresne



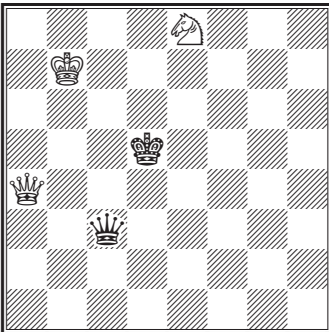
Weiss zieht und macht das Spiel  
unentschieden

## 4. Emil Feyerfeil in Wien



Weiss zieht und gewinnt

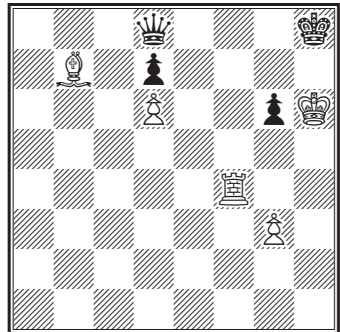
## 5. Carl Heller in Barmen



Weiss zieht und gewinnt

[ Wiener Salonblatt, 1873 ]

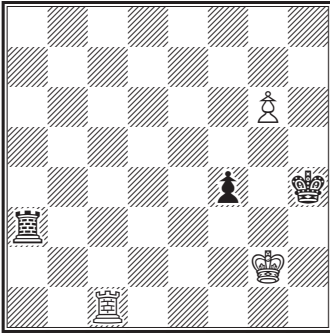
## 6. Horwitz



Weiss zieht und gewinnt

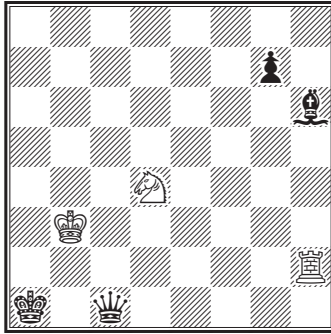
[ 86, Chess Player's Chronicle, 1860 ]

7. Horwitz



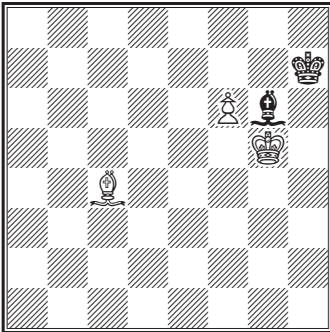
Weiss zieht und gewinnt

8. Horwitz



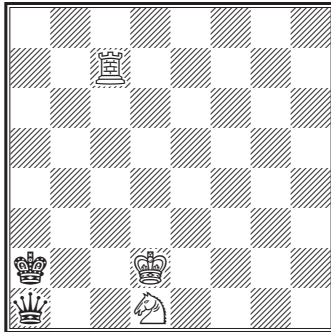
Weiss zieht und gewinnt

9. Horwitz



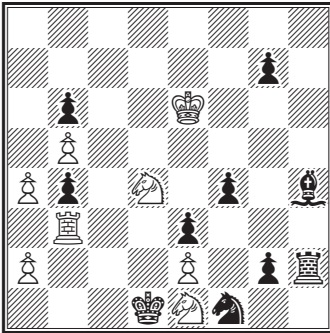
Weiss zieht und gewinnt

10. Horwitz



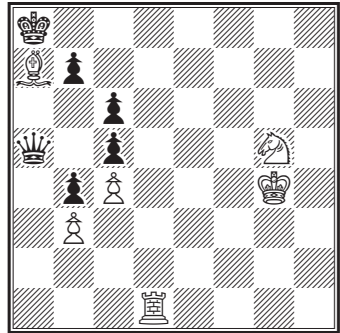
Weiss zieht und gewinnt

11. Horwitz



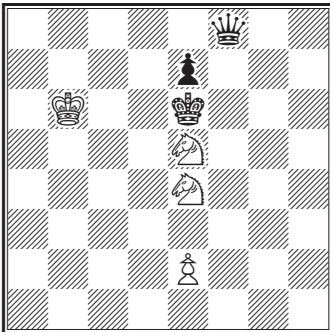
Weiss zieht und gewinnt

12. Horwitz



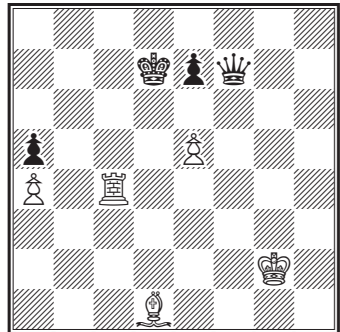
Weiss zieht und gewinnt

13. Kling und Horwitz



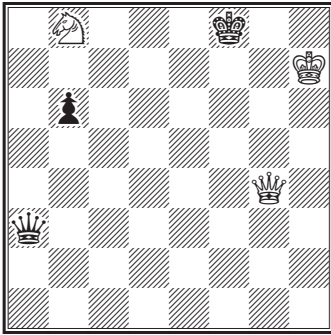
Weiss zieht und macht Remis

14. Kling und Horwitz



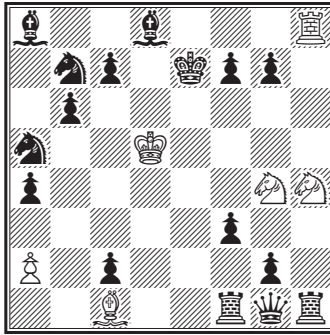
Weiss zieht und gewinnt

15. Kling und Horwitz

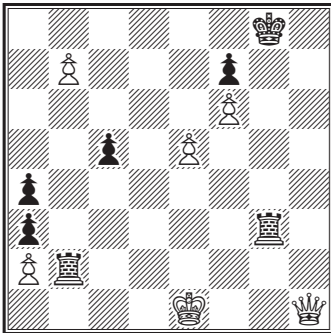


Weiss zieht und gewinnt [\*]

16. Heinrich Meyer

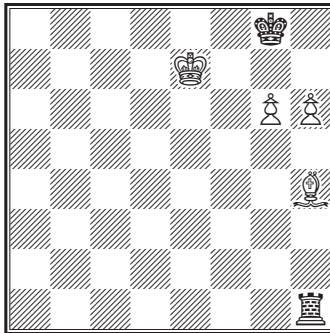
Weiss zieht und macht das Spiel  
unentschieden

17. C. Salvioi in Venedig



Weiss zieht und gewinnt

18. Steinitz



Weiss zieht und gewinnt





# Lösung der Aufgaben

## 1. Lösung der zweizügigen Aufgaben

- |    |  |  |                            |   |  |
|----|--|--|----------------------------|---|--|
| 1. | 1. La1, Kd5<br>1. ... Lb3<br>1. ... L~<br>1. ... S~          | 2. Dd3‡<br>2. De4‡<br>2. D(x)b5‡<br>2. S ‡ | 1. ... Sxc2<br>1. ... dxc2 | 2. Dg7‡<br>2. Dd4‡  |  |
| 2. | 1. Se4, Ke6<br>1. ... Kd4/xe4<br>1. ... Kxc6<br>1. ... Kc4/~ | 2. Da2‡<br>2. Dd3‡<br>2. Dd6‡<br>2. Dc5‡   | 9.                         | 1. Dh6, Kxd6<br>1. ... Sxd6<br>1. ... Lxe6<br>1. ... ~              | 2. Lb8‡<br>2. Df6‡<br>2. Txe6‡<br>2. Td5‡            |
| 3. | 1. Th5, Kd4<br>1. ... Kc2/~                                  | 2. Dd2‡<br>2. Sb4‡                         | 10.                        | 1. Dg1, 1. ... Kc7<br>1. ... ~                                      | 2. Dh2‡<br>2. Sc6/Sa6 ‡                              |
| 4. | 1. Lg7, Kd6<br>1. ... Kd4/~                                  | 2. Lf8‡<br>2. S ‡                          | 11.                        | 1. Db5, Kf5<br>1. ... Kd3<br>1. ... Dd4†/D~<br>1. ... T~            | 2. S5e3‡<br>2. Sb4‡<br>2. S5e3‡<br>2. Sf4‡           |
| 5. | 1. Dh7, Ke4/xe6<br>1. ... ~                                  | 2. S2f4‡<br>2. S2(x)f4/Sc3‡                | 12.                        | 1. Tg4, Kxe4<br>1. ... ~  | 2. Dxc6‡<br>2. D/S/L ‡                               |
| 6. | 1. Se2, Kxe4<br>1. ... Kc4<br>1. ... Sxe2/~<br>Sf4 ‡         | 2. Sc3‡<br>2. Txd4‡<br>2. D(x)f5/Sc3/      | 13.                        | 1. Da8, Kxe4<br>1. ... Kg5/T~                                       | 2. Se3‡<br>2. Le3‡                                   |
| 7. | 1. Dd7, Kh3<br>1. ... Kh5<br>1. ... ~                        | 2. Th2‡<br>2. Dh7‡<br>2. L/D ‡             | 14.                        | ...   | 2. D/S/P ‡   |
| 8. | 1. Sc2, Ke4/xf4<br>1. ... Kf6<br>1. ... Kd6                  | 2. De3‡<br>2. Dg7‡<br>2. Dc7‡              | 15.                        | 1. Sf6, ~   | 2. D/S/P ‡   |
|    |  |  | 16.                        | 1. Dh3, Kxf4<br>1. ... d4<br>1. ... e6<br>1. ... gx f4<br>1. ... S~ | 2. Dh2‡<br>2. Tf5‡<br>2. Sd3‡<br>2. Dh8‡<br>2. Dxe3‡ |

17. 1. Dh8, ~ 2. D/S † 1. ... S×d7 2. Sd6‡
18. 1. Sd6, K×d6 2. c8S‡ 1. ... Sf~ 2. Td8‡  
1. ... K×f6 2. g8S‡ 1. ... Sf8 2. e×f8S‡  
1. ... L×f7 2. Td8‡
19. 1. Dh6, ~ 2. D/T/S/L † 28. 1. Lf5, ~ 2. D †
20. 1. Sb3, ~ 2. D/T (durch  
entsprechendes Abzug-  
schach) setzt Matt. 29. 1. Dg6, ~ 2. D/T †
21. 1. Lc7 Wenn Weiss diesen Läufer  
auf ein anderes Feld stellt,  
hindert Ta7 des sofortige  
Matt.  
1. ... T×h8 2. Kf2‡  
1. ... Ta6 2. Lg6‡  
1. ... Ta5 2. Lf5‡  
1. ... Ta4 2. Le4‡  
1. ... Ta2 2. Lc2‡  
1. ... T×a1† 2. Lb1‡  
1. ... T~ 2. L †  
1. ... f2 2. Le4/g8‡
22. 1. b4, T×b4 2. Sc3‡  
1. ... L×b4 2. c4‡  
1. ... S×e4 2. Dg8‡  
1. ... K×e4 2. c4‡  
1. ... c×b5 2. Da8‡  
1. ... ~ 2. c4/Sc3 †
23. 1. Tf4, ~ 2. D/T/S/L †
24. 1. Tc4, f4 2. g×f4‡  
1. ... ~ 2. D/T/S/L †
25. 1. Th4, Kc3 2. Se2‡  
1. ... K×c5 2. Sd3‡  
1. ... K×c4 2. Db4‡  
1. ... Ke3 2. Dd3‡  
1. ... K×e5 2. Lg7‡
26. 1. Le2, K×d2 2. Dd3‡  
1. ... L×d2 2. D×e5‡  
1. ... e4 2. Dg5‡
27. 1. Td7, K×d7 2. Dc6‡  
1. ... K×f7 2. e8D‡
31. 1. Da8, K~ 2. D/S/L †  
1. ... S~ 2. T †
32. 1. Lc6, S×c6 2. K×c6‡  
1. ... Sd5 2. Sb5‡  
1. ... S~ 2. Te4‡  
1. ... Th5 2. S×e6‡  
1. ... ~ 2. D †
33. 1. Db1, Kf5 2. Ld7‡  
1. ... Kd6 2. f5‡  
1. ... ~ 2. D/L/f5 †
34. 1. Tb7, K×d5 2. Tbd7‡  
1. ... Ke3/~ 2. Te7‡
35. 1. Db7, ~ 2. D/T/L †  
durch entsprechendes  
Abzugschach.
36. 1. Sc3, ~ 2. D/T/S/f3/  
f×e3 †
37. 1. Sc7, Kc5 2. Se6‡  
1. ... ~ 2. S/L †
38. 1. Kb7, D×b3† 2. L×b3‡  
1. ... L×d5† 2. L×d5‡  
1. ... a6 2. L(×)a6  
1. ... ~ 2. L/S/D †
39. 1. Tc6, Dd1†/f1† 2. Tc1‡  
1. ... Dc3† 2. T×c3‡  
1. ... Df6† 2. T×f6‡  
1. ... ~ 2. T/L †
40. 1. Dd8, K×f4 2. Df6‡  
1. ... S×f4 2. d4‡  
1. ... ~ 2. D/T †





95. 1. Bh3, K×f2      2. Bd4‡      99. 1. Rb6, D~      2. D/S †  
1. ... Kd2      2. Bf4‡      1. ... Ra4      2. b×a4‡  
1. ... Ke1      2. Sbd3‡      1. ... Rb4      2. Sc3 †  
1. ... Ke3      2. Sbd1‡      1. ... Rc4      2. b×c4‡  
1. ... Rd4      2. Se3‡  
96. 1. Bg7, Se4      2. Sb3‡      1. ... Re4      2. f×e4‡  
1. ... Sd5      2. Sc6‡      1. ... Rg4      2. f×g4‡  
1. ... S~      2. Rh4/d8 †      1. ... Rh4      2. f4‡  
1. ... e4      2. B×f6‡
97. 1. Be4, d×e4      2. Se6‡      100. 1. Qe2, K×b8      2. Qh2‡  
1. ... Kd4      2. Qc3‡      1. ... K×d8      2. Bb6‡  
1. ... d4/Kf4      2. Qc7‡      1. ... Kd6      2. Bf4‡  
1. ... d×e2      2. Sa6‡
98. 1. Rd1, K×c5      2. d4‡  
1. ... ~      2. D/T/S †

## 2. Lösung der dreizügigen Aufgaben

- |    |   |   |  |
|----|---|---|--|
| 1. | 1. Dg1, b3<br>1. ... Kb3  | 2. Lb4, Kxb4<br>2. ... axb4<br>2. Dg8† &c.  | 3. Dd4‡<br>3. Da7‡   |
| 2. | 1. Lh4, Ke6<br>1. ... e5<br>1. ... Lb7<br>1. ... e6<br>1. ... Sd3 | 2. Df5†, Kxf5<br>2. Sxb6†, Ke6<br>2. Db3†, Kc6<br>2. Dc3, ~<br>2. Dc4†, Kxc4        | 3. Sd4‡<br>3. Dg6‡<br>3. Sb8‡<br>3. S ‡<br>3. Sxb6‡                  |
| 3. | 1. Lf5, e5<br>1. ... e6   | 2. Dc8, Ke7<br>2. ... e4<br>2. Dc5, exf5<br>2. ... e5                               | 3. Df8‡<br>3. De6‡<br>3. Dd6‡<br>3. Df8‡                             |
| 4. | 1. Sg5, Kxe5<br>1. ... dxe5                                       | 2. c3, Kd5<br>2. ... d5<br>2. Se4, K~   | 3. Db5‡<br>3. Df4‡<br>3. Dd3‡/Db5‡/Df7‡                              |
| 5. | 1. Ld4, Lxd4<br>1. ... d1D<br>1. ... d1S                          | 2. Te5, ~<br>2. Dh2† &c.<br>2. Df1† &c  | 3. D/T ‡   |
| 6. | 1. Sc3, Kxd6<br>1. ... Txf7<br>1. ... Dxf7<br>1. ... b5/c5        | 2. Dc6†, Kxc6<br>2. ... Ke5/Ke7<br>2. Td5† &c.<br>2. De4† &c.<br>2. Dxc3†, Kf5      | 3. b5‡<br>3. Df6‡<br>3. Tf6‡   |
| 7. | 1. Sd5, Lxd5<br>1. ... Kd4  | 2. Sxb5, Le4<br>2. ... Le6<br>2. ... ~<br>2. Sxb5†, Kd3<br>2. ... Kc5<br>2. ... Ke5 | 3. Dd6‡<br>3. Dd4‡<br>3. D(x)f5‡<br>3. Sf4‡<br>3. d4‡<br>3. Dd6, d4‡ |
| 8. | 1. Sxf5, e4<br>1. ... Ke4   | 2. Dc4, Kxf3<br>2. ... Kxf5<br>2. Sd2†, Kd5   | 3. Df1‡<br>3. Df7‡<br>3. Dc4‡  |

9. 1. Db2, L×c4    2. Db8, K×d4    3. De5‡  
    2. ... Lb5        3. Da7‡  
    2. ... ~            3. Db4‡
10. 1. Se5, K×e5    2. De3, ~        3. S setzt durch  
     entsprechendes Abzugschach Matt.  
    1. ... ~            2. Sg6†/Lg5† &c.
11. 1. De8, Ke5     2. Db5, Kf4/Kd6    3. Db8‡  
    2. ... Kd4/Kf6    3. Db2‡  
    1. ... Kg3        2. Dh5, Kf2/~      3. D×h2‡  
    1. ... S~         2. Dh5, ~          3. D×h2‡
12. 1. Se4, K×d3    2. Dc5, K×e4      3. Lf5‡  
    2. ... S~         3. Dc4‡  
    2. ... Ld2        3. Sf2‡  
    2. ... Le3        3. Dc4‡  
    1. ... Sd5        2. De5†, K×e5      3. Sf3‡  
    2. ... K×d3      3. Sf2‡
- Andere Varianten leicht.
13. 1. De8, Kc4     2. Db5†, K×b5      3. Le2‡  
    1. ... Lf3        2. Db5†, Ke4      3. Lc2‡  
    1. ... L×d5      2. Db5†, ~        3. Db1‡  
    1. ... ~          2. Da4, ~         3. Dc2‡
14. 1. Ld3, L×h4    2. Dc3, b×c3       3. d×c3‡  
    2. ... ~         3. D ‡  
    1. ... Ta7        2. Lg6, ~          3. De4/Df5 ‡  
    1. ... ~          2. Dd1, ~         3. D ‡
15. 1. Lc6, e1       2. S×f4†, K~       3. Df8‡  
    1. ... L×h3      2. S×e3†, K~      3. Da3‡  
    1. ... Kf5        2. De8, ~         3. Ld7‡  
    1. ... Kd3        2. L×b5†, Kc2     3. Da4‡  
    2. ... Ke4        3. Se7‡
16. 1. Sf4, Kf5      2. Df6†, K×f6      3. Se6‡  
    2. ... Ke4        3. Ld5‡  
    2. ... Kg4        3. Lh5‡  
    1. ... Sb3        2. Dc2†, Kd4/Ke5   3. Se2‡  
    1. ... b×a4      2. Df6, ~         3. Ld5/Lg6 ‡
17. 1. Lg3, Db6/De6   2. D(×)e4†, Kd6    3. T×f7‡  
    1. ... Sd7†       2. D×d7†, Ke5     3. Sc6‡  
    1. ... ~          2. Dd6†, K×d6     3. Td4‡



- |     |  |  |   |
|-----|--|--|---|
| 18. | 1. Sd6, K×d4<br>1. ... Sh~   | 2. Sc6†, Kc5<br>2. Sc6†, Ke6   | 3. Lb4‡<br>3. Lf5‡  |
| 19. | 1. Sc5, Sc4<br>1. ... Sc6<br>1. ... T×c7<br>1. ... Tg7†<br>1. ... Th7              | 2. Td5†, K×d5<br>2. Td5†, K×d5<br>2. Lg6†, f5<br>2. Lg6†, f5<br>2. L×h7†, f5   | 3. Le4‡<br>3. Le6‡<br>3. T×f5‡<br>3. T×f5‡<br>3. T×f5‡                        |
| 20. | 1. Sc5, K×d4<br>1. ... ~   | 2. Df4†, Kc3<br>2. Df4†, K×f4  | 3. Sa4‡<br>3. Sd3‡  |
| 21. | 1. Tc1, Se4<br><br>1. ... Le5<br><br>1. ... S~                                     | 2. Db3, c×b3<br>2. ... ~<br>2. Td1†, Ke4<br>2. ... S×d1<br>2. ... Ld4<br>2. Dg2†, Se4                                    | 3. c4‡<br>3. Db7/S(×)c7 ‡<br>3. Dg2‡<br>3. Dg2‡<br>3. S×f6‡<br>3. S(×)c7‡     |
| 22. | 1. Se1, K×e5<br><br>1. ... e3<br>1. ... S×d7<br>1. ... Sf7<br>1. ... g5/g×h5       | 2. Td4, K×d4<br>2. ... K×f4<br>2. ... Ke6/~<br>2. Sf3, ~<br>2. S×d7, ~<br>2. S×f7, ~<br>2. Lc4†, K×e5                    | 3. Sf3‡<br>3. Sd3‡<br>3. Td(×)e4‡<br>3. Lc4‡<br>3. Lc4‡<br>3. Lc4‡<br>3. Tf5‡ |
| 23. | 1. Teh3, La1<br>1. ... Le3<br>1. ... Tb2<br>1. ... T×b3<br>1. ... S~<br>1. ... Ld3 | 2. Tb2, ~<br>2. T×e3, ~<br>2. T×b2, &c.<br>2. T×b3, &c.<br>2. Tc2†, ~<br>2. T×d3, &c.                                    | 3. b4/Tc3‡<br>3. Tc3/T×e5 ‡<br><br><br>3. S×e6/T×c3 ‡                         |
| 24. | 1. Tf4, Kb5<br><br>1. ... e×f4<br><br>1. ... Lc6<br><br>1. ... Lc8<br>1. ... Le8   | 2. Da4†, K×a4<br>2. ... Ka6<br>2. Sc5†, Kb5<br>2. ... b×c5<br>2. Sc5†, Kb5<br>2. ... b×c5<br>2. Da4, &c.<br>2. L×e8, &c. | 3. Sc3‡<br>3. Sb4‡<br>3. S×d4‡<br>3. D×a5‡<br>3. Db4‡<br>3. D×a5‡             |
| 25. | 1. Th2, K×f3<br>1. ... K×e3<br>1. ... Kd3<br>1. ... Kd5                            | 2. De6, Kg3<br>2. Dg4, Kd3<br>2. De8, Kc4<br>2. Th4, Kd6   | 3. Dh3‡<br>3. Dd4‡<br>3. Db5‡<br>3. Td4‡                                      |

- |            |                |                 |              |
|------------|----------------|-----------------|--------------|
| 26.        | 1. Kd2, Kh1    | 2. Dc6, g1      | 3. Sf2‡      |
|            |                | 2. ... Kg1      | 3. Dc1‡      |
|            | 1. ... Kf1     | 2. Df6†, Kg1    | 3. Da1‡      |
|            | 1. ... Th1     | 2. De5, ~       | 3. Da1‡      |
| 27.        | 1. Dd8, b5     | 2. Lb4, K×b4    | 3. Dd4‡      |
|            |                | 2. ... L×b4     | 3. Dd1‡      |
|            |                | 2. ... a×b4     | 3. Da8‡      |
|            | 1. ... ~       | 2. D×b6/Dd3, ~  | 3. D ‡       |
| 28.        | 1. Dd8, Lf3    | 2. Tf4, S×f4    | 3. d4‡       |
|            |                | 2. ... K×f4     | 3. Sg6‡      |
|            |                | 2. ... Ld6      | 3. Dg5‡      |
|            |                | 2. ... Ld5      | 3. D×b8‡     |
|            |                | 2. ... ~        | 3. Dd4/Tf5 ‡ |
|            | 1. ... Sf2/Sc5 | 2. Td5†, Kf4    | 3. Tf5‡      |
|            | 1. ... Sf6     | 2. Sg6† &c.     |              |
| 1. ... Se7 | 2. Te4† &c.    |                 |              |
| 29.        | 1. Df8, e6     | 2. Dc5†, Kf6    | 3. Se4‡      |
|            |                | 2. ... Kf4      | 3. Tf7‡      |
|            | 1. ... Kd4     | 2. Df4†, Kc5    | 3. Sd3‡      |
|            | 1. ... ~       | 2. T×e7†, ~     | 3. D/T/S ‡   |
| 30.        | 1. Sd3, e×d5   | 2. Sf2†, Kf5    | 3. g4‡       |
|            |                | 2. ... Kd4      | 3. Db6‡      |
|            | 1. ... K×d5    | 2. Dh4, Kd6/e4  | 3. Dd8‡      |
|            | 1. ... Kf5     | 2. T×e5†, Kg4   | 3. Dh3‡      |
| 31.        | 1. Da7, K×f4   | 2. De7, ~       | 3. e3‡       |
|            | 1. ... Ke5     | 2. De3†, Kf6    | 3. Sh5‡      |
|            | 1. ... ~       | 2. e3, ~        | 3. D ‡       |
| 32.        | 1. Td3, c×d3   | 2. Tfd5, L×d5   | 3. Lh3‡      |
|            |                | 2. ... ~        | 3. Sd8‡      |
| 33.        | 1. Th3, b3     | 2. Th1, g×h1(†) | 3. D×h1‡     |
| 34.        | 1. Se8, Kf4    | 2. Sc5, Kg5     | 3. Se6‡      |
|            |                | 2. ... Ke3      | 3. Df2‡      |
|            |                | 2. ... Ke5      | 3. De4‡      |
|            | 1. ... Kd4     | 2. Kf3, ~       | 3. De4‡      |
| 35.        | 1. D×h5, K×d4  | 2. Df3, Ke5     | 3. Dd5‡      |
|            |                | 2. ... c3       | 3. D×f4‡     |
|            |                | 2. ... d6/d5    | 3. Sc6‡      |
|            | 1. ... Kf5     | 2. Dh6, &c.     |              |
|            | 1. ... d6      | 2. Td5†, &c.    |              |
|            | 1. ... f3      | 2. Dh8†, &c.    |              |

36. 1. Sc4, K×h5      2. Dh7†, Kg4      3. Se5‡  
     1. ... Kh4      2. Dh1†, Kg4      3. Se3‡  
     1. ... ~      2. Se3‡, &c.
37. 1. Dh6, T×e5      2. D×d2, ~      3. D/L ‡  
     1. ... Le4      2. Df6, &c.  
     1. ... L×c2/T×f2      2. T×d5†, &c.
38. 1. Se6, d×e6/f×e6      2. b7, ~      3. L/T ‡
39. 1. Lh3, g×h3      2. Df6, Kg4      3. Dg6‡  
     1. ... Kg6      2. L×g4, Kg5      3. Dg7‡  
     1. ... Kg5      2. ... Kh7      3. Lf5‡  
     1. ... Kg5      2. Dg7†, &c.
40. 1. L×d7, S×d5      2. De5†, S×e5      3. Sg5‡  
     1. ... S×h8      2. ... K×f3      3. S5h4‡  
     1. ... K×f3      2. Te5†, K×f3      3. S5h4‡  
     1. ... K×f3      2. Dh3†, &c.  
 Andere Varianten leicht; meistens durch 2. Td3.
41. 1. Tc8, Ke6      2. e8S, Kd7      3. Lf5‡  
     1. ... Kd6      2. ... Kf7      3. Ld5‡  
     1. ... K×c8      2. e8L, Ke6      3. Tc6‡  
     1. ... K×c8      2. e8D†, Kc7      3. Dd8‡
42. 1. L×e5, d×e5      2. Se4, K×d5      3. Dg8‡  
     1. ... c×d5      2. ... c×d5      3. Df1‡  
     1. ... K×d5      2. ... ~      3. Sb6‡  
     1. ... K×d5      2. Dg8†, K×c5      3. Ld4‡  
     1. ... f×g2      2. ... K×e5      3. Dg5‡  
     1. ... f×g2      2. Sb6†, &c.
43. 1. Dg1, Sf3      2. Tf1, S~      3. f4‡  
     1. ... ~      2. ... ~      3. D/S/L ‡  
     1. ... Kf4      2. Kf6, ~      3. D/S/L ‡  
     1. ... Sf5†      2. L×f5, ~      3. D/S/L ‡  
     1. ... Sg6      2. Te1†, ~      3. T/S ‡
44. 1. De6, Sf4      2. De5†, K~      3. Lc3/Dc3 ‡  
     1. ... Kd3      2. Db3†, Kd4      3. Dc3‡  
     1. ... Kc5      2. Dd5†, Kb6      3. La5‡  
 Andere Varianten leicht.
45. 1. Lf5, L×g3      2. Sb3†, Ke5      3. Sf7‡  
     1. ... Ke3      2. ... Ke3      3. Sg4‡  
     1. ... d1S      2. Sb3†, Ke3      3. Sg4‡  
     1. ... g×f5      2. S×f5†, K~      3. Db1/Db5 ‡  
     1. ... a×b2      2. Df2†, &c/

46. 1. Lf3  
Es droht 2. Sd8† und 3. Lg4‡.
- |             |              |              |
|-------------|--------------|--------------|
| 1. ... Lf6  | 2. d5†, ~    | 3. Dc8/Lg4 ‡ |
| 1. ... L×d4 | 2. Sd8†, ~   | 3. Sc4/Lg4 ‡ |
| 1. ... Kd7  | 2. Lg4†, &c. |              |
| 1. ... Kf5  | 2. Dh6, &c.  |              |
| 1. ... Kf6  | 2. Sd8†, &c. |              |
| 1. ... Sc6  | 2. Sg5†, &c. |              |
| 1. ... c5   | 2. Dd6†, &c. |              |
47. 1. Ta2, e×d4      2. Ld7, K×d3      3. Lf5‡
48. 1. Le8, S×e8      2. Tg5, L×g5      3. S×g3‡  
                          2. ... f4            3. Te5‡  
                          2. ... ~             3. S(x)f6‡
49. 1. De4, K×c5      2. Sd8, Kd6        3. Dd4‡  
                          2. ... ~             3. Sb7‡
50. 1. La2, S×a2      2. Td4†, ~         3. D ‡  
1. ... Ke6            2. Df5†, K×f5      3. T×f4‡  
1. ... e6             2. e4†, f×e3 ep.    3. D×g2‡
51. 1. Sb5, Ld5        2. Te6, K×e6        3. Sd4‡  
                          2. ... L×e6         3. Sd6‡  
1. ... ~             2. Sd4†, ~         3. Te7‡
52. 1. Tg4, S×e5      2. Dd4†, K×d4      3. T×f4‡  
                          2. ... K~            3. D×f4‡  
1. ... Td1            2. D×e3†, K×e3    3. Te2‡  
                          2. ... Kf5            3. D×f4‡  
1. ... T×c1          2. T×f4†, Kd3      3. Dh7‡  
                          2. ... K×e5          3. Dc7‡  
1. ... Kf5            2. T×f4†, &c.
53. 1. Tg5, e4          2. Db4, ~            3. D/S ‡  
1. ... L×g5          2. Sf5†, g×f5        3. Df2‡  
1. ... e×d4          2. De7, L×g5        3. De1‡  
                          2. ... ~             3. Tg4‡
54. 1. Sa6, a×b6      2. Db4†, K×a6      3. Da4‡  
                          2. ... Kc6            3. Sb8‡  
1. ... b×a6          2. Sd5, a5          3. Sc3‡  
1. ... Ka5            2. Sc7, &c.  
1. ... K×a6          2. Db4, &c.
55. 1. Df2, K×e7      2. Ld6†, K×d6      3. Dc5‡  
                          2. ... K~            3. Df8‡

- |     |  |                   |              |
|-----|--|-------------------|--------------|
|     | 1. ... Kg7   | 2. Le5†, K~       | 3. Dh4‡      |
|     | 1. ... ~   | 2. Lh6†, ~        | 3. Df4/Df8 ‡ |
| 56. | 1. Dh1, g6   | 2. Tf3, ~         | 3. D/T/S ‡   |
|     | 1. ... L×h1  | 2. Tf5†, Ke4      | 3. Sg3‡      |
|     | 1. ... d3  | 2. Tf5†, Kd4      | 3. Da1‡      |
| 57. | 1. Lb6, Ke5  | 2. Sce4†, Kf4     | 3. g3‡       |
|     | 1. ... e6  | 2. Sce4†, L×e4    | 3. Ld8‡      |
|     |  | 2. ... Ke7        | 3. Ta7‡      |
|     | Auf 1. ... e5 folgt 2. Ld8‡, ebenso auf 1. Lf5 beliebig, |                   |              |
|     | 2. Sd7 oder Se4 ‡  |                   |              |
|     | 1. ... g3  | 2. Sce6, &c.      |              |
| 58. | 1. Te5, Tf8  | 2. Dh2, K×e5      | 3. Db2‡      |
|     |  | 2. ... L×e5       | 3. Df2‡      |
|     |  | 2. ... Sd3/e2/g2  | 3. S(×)e2‡   |
|     |  | [ 2. ... Sd5! ]   |              |
|     | [ 1. Te5, Tf8  | 2. Dh1, ~         | 3. D‡ ]      |
| 59. | 1. Ka7, f4   | 2. Da5†, f5       | 3. Dd8‡      |
|     |  | 2. ... Kh4        | 3. Dh5‡      |
|     | 1. ... Lg2/Lf1   | 2. h4†, &c.       |              |
|     | 1. ... g3  | 2. D×g3†, Lg4     | 3. h4‡       |
|     | 1. ... g6  | 2. L×f6†, &c.     |              |
| 60. | 1. Da6, Sf6  | 2. De6†, T×e6     | 3. Sf7‡      |
|     | 1. ... h3  | 2. Dg6, Sf6       | 3. Dg3‡      |
|     |  | 2. ... ~          | 3. D/S ‡     |
|     | 1. ... Lc7   | 2. Da1†, Kd6      | 3. Dd4‡      |
| 61. | 1. Ta6, Kf4  | 2. L×b6, Kg3/Ke5  | 3. Lc7‡      |
|     |  | 2. ... K×g5       | 3. Le3‡      |
|     | 1. ... b5  | 2. Tf6, b4        | 3. Tf3‡      |
| 62. | 1. Te3, Kd4  | 2. Te4†, K×e4/Kc5 | 3. De3‡      |
|     | 1. ... Sac6  | 2. Te7, K×d6      | 3. D×b4‡     |
|     |  | 2. ... Sd4        | 3. Te5‡      |
|     |  | 2. ... Kd4/~      | 3. De3‡      |
|     | 1. ... Sa~   | 2. Te5†, Kd4      | 3. De3‡      |
| 63. | 1. Da3, b×a3   | 2. Tc4, a2        | 3. e4‡       |
|     | 1. ... K×e4  | 2. Da7, Kd5       | 3. Db7‡      |
|     |  | 2. ... Kf5        | 3. Dh7‡      |
|     |  | 2. ... Kf3        | 3. Se1‡      |
|     | 1. ... Kc6   | 2. Da8†, Kb5/Kb6  | 3. T×b4‡     |
|     |  | 2. ... Kd7        | 3. Sc5‡      |

64. 1.  $L \times a4, K \times e6$  2.  $Df5\uparrow, K \times f5$  3.  $Ld7\ddagger$   
     2. ...  $Ke7$  3.  $Df6\ddagger$   
     1. ...  $Kc4$  2.  $g3, \sim$  3.  $D/S/L\ddagger$
65. 1.  $Da3, Tb4$  2.  $Dc3\uparrow, K \times c3$  3.  $Lf6\ddagger$   
     2. ...  $Kc5$  3.  $De5\ddagger$   
     1. ...  $Ke5$  2.  $Dc5\uparrow, \&c.$   
     1. ...  $T \times d8$  2.  $Se2\uparrow, Ke5$  3.  $De7\ddagger$
66. 1.  $Df2, Lg4$  2.  $D \times f4\uparrow, K \times f4$  3.  $Ld6\ddagger$   
     2. ...  $Kd4$  3.  $Dd6\ddagger$   
     1. ...  $Lg2/Lf1$  2.  $d4\uparrow, c \times d3$  e.p. 3.  $Db2\ddagger$   
     2. ...  $Kf6$  3.  $D \times f4\ddagger$   
     1. ...  $Sd3/Se2/Sg2$  2.  $Lg7\uparrow, f6$  3.  $D \times f6\ddagger$   
     2. ...  $Kd6$  3.  $c8S\ddagger$   
     1. ...  $Se6$  2.  $Df6\uparrow, K \times f6$  3.  $S \times d7\ddagger$   
     1. ...  $Sd5$  2.  $d4\uparrow, c \times d3$  e.p. 3.  $Se \times d3\ddagger$   
     1. ...  $\sim$  2.  $Dd4\uparrow/Sf3\uparrow, \&c.$
67. 1.  $Dh8, L \times d5$  2.  $Kh6, \sim$  3.  $Df8/Dd4\ddagger$   
     [ 2. ...  $Lc4!$  ]  
     1. ...  $K \times d5$  2.  $Kg6, \sim$  3.  $D\ddagger$   
     1. ...  $Kd6$  2.  $Df8\uparrow, K \times d5$  3.  $S1c3\ddagger$
68. 1.  $Dh2, Ke4$  2.  $Ld5\uparrow, K \times d5$  3.  $Dd6\ddagger$   
     2. ...  $Kf5/Kd3$  3.  $Le4\ddagger$   
     1. ...  $Sb4$  2.  $Dd6\uparrow, Ke4$  3.  $Ld3\ddagger$   
     2. ...  $K \times c4$  3.  $T \times b4\ddagger$   
     2. ...  $Sd5\uparrow$  3.  $D \times d5\ddagger$   
     1. ...  $\sim$  2.  $Df4\uparrow/Dd6\uparrow, \&c.$
69. 1.  $Dg5, L \times g5\uparrow$  2.  $Kc3, \sim$  3.  $S\ddagger$   
     1. ...  $Ld6$  2.  $S \times d6\uparrow, Ke6$  3.  $f8S\ddagger$   
     Andere Varianten leicht.
70. 1.  $Lf2, Ke7$  2.  $Le1, \sim$  3.  $L\ddagger$
71. 1.  $Ld5, K \times e5$  2.  $Tgg5\uparrow, K \sim$  3.  $Ld2\ddagger$   
     1. ...  $d6$  2.  $Tgg5, \&c.$
72. 1.  $Lf7, Lg2$  2.  $Te4, \sim$  3.  $T/S\ddagger$   
     1. ...  $Kc4$  2.  $Se3\uparrow, Kb3$  3.  $Sc5\ddagger$   
     1. ...  $d \times e2$  2.  $Sf4\uparrow, \&c.$   
     1. ...  $d \times c2$  2.  $b3, \&c.$
73. 1.  $Ld6, Dg5$  2.  $Kg1, \sim$  3.  $D/S\ddagger$   
     1. ...  $Df8$  2.  $Dc8\uparrow, Kf7$  3.  $D \times e6\ddagger$

- |     |  |  |   |
|-----|--|--|---|
| 74. | 1. Kc7, Td3<br>1 ... Sg5/~                             | 2. e3, T×e3<br>2. ... S~<br>2. ... ~<br>2. D×d5†, &c.                        | 3. Sf2‡<br>3. S(×)g5‡<br>3. D/S ‡                   |
| 75. | 1. Ka1, Lg2<br>1 ... f5<br>1 ... Lf3                   | 2. De2, ~<br>2. Se6, K×e6<br>2. ... ~<br>2. Dd3†, &c.                        | 3. D ‡<br>3. D×f5‡<br>3. S×c7‡                      |
| 76. | 1. Lb7, T×b7<br>1 ... Ta8                              | 2. Da8, T~<br>2. Kf2, &c.  | 3. Dh1‡   |
| 77. | 1. Tc7, K×c7<br>1 ... K×e5<br>1 ... Sd7/Se6/b6         | 2. Tec5†, K~<br>2. Tcc5†, &c.<br>2. Tec5, ~                                  | 3. T/S ‡<br>3. S/L ‡                                |
| 78. | 1. Sh7, Se8<br>1 ... Kf5/Kd5<br>1 ... Sf7<br>1 ... Sg6 | 2. Dd7†, K×d7<br>2. ... Kd5<br>2. Se7†, &c.<br>2. Sf8†, &c.<br>2. D×g6†, &c. | 3. Sf8‡<br>3. Df5‡                                  |
| 79. | 1. Sc4, K×d5<br>1 ... S×h6<br>1 ... c2<br>1 ... Ld3    | 2. Dc6†, K×c6<br>2. T×e5†, Kf4<br>2. Sd2†, ~<br>2. e×d3†, &c.                | 3. Se7‡<br>3. e3‡<br>3. Se7/e4 ‡                    |
| 80. | 1. Ka7, Ke5  | 2. Da8, K×f6<br>2. ... K×d6<br>2. ... Kd4<br>2. ... Kf4                      | 3. Dh8‡<br>3. S×f7‡<br>3. Sf3‡<br>3. Sd3‡           |
| 81. | 1. h4, Tf6<br>1 ... Tg6<br>1 ... Tc6                   | 2. Dd7, Tf4<br>2. ... Td6<br>2. D×g6, Kd5<br>2. ... Kf4<br>2. K×c6, ~        | 3. De6‡<br>3. Df5‡<br>3. De6‡<br>3. Df5‡<br>3. Df5‡ |
| 82. | 1. Dg3, Ka4<br>1 ... Ka6<br>1 ... Lf3/Lc2<br>1 ... Lb3 | 2. Dc3, ~<br>2. D×c7, ~<br>2. Dg8, ~<br>2. D×c7†, Ka4<br>2. ... Ka6          | 3. Db4‡<br>3. Db6‡<br>3. D ‡<br>3. Da7‡<br>3. Db6‡  |
| 83. | 1. Df1, Lb2<br>1 ... Lc3/Ld4<br>1 ... Le5/Lf6          | 2. Db1, ~<br>2. Dd3, ~<br>2. Df5, ~  | 3. D ‡<br>3. D ‡<br>3. D ‡                          |

- |     |                          |                                      |              |
|-----|--------------------------|--------------------------------------|--------------|
|     | 1. ... g3                | 2. Sg6†, h×g6                        | 3. Dh3‡      |
|     | 1. ... h6/h5             | 2. Db1, &c.                          |              |
| 84. | 1. Sg4, g×h5             | 2. Sh2, Kf2                          | 3. Dd4‡      |
|     |                          | 2. ... Kh1                           | 3. Sf3‡      |
|     |                          | 2. ... g×h2                          | 3. De1‡      |
|     | 1. ... g5                | 2. D×g3, &c.                         |              |
|     | 1. ... Kf1               | 2. S×g3†, &c.                        |              |
| 85. | 1. Dh4, ~<br>[ 1. Ld6† ] | 2. ~×D, ~                            | 3. D/S ‡     |
| 86. | 1. Se6, Kc6              | 2. Dc5†, d×c5                        | 3. Sc7‡      |
|     |                          | 2. ... Kd7                           | 3. Dc7‡      |
|     | 1. ... Kc4               | 2. Db6, &c.                          |              |
|     | 1. ... d2                | 2. Dc3, &c.                          |              |
|     | 1. ... L~                | 2. D×e4†, K×e4                       | 3. Lg2‡      |
| 87. | 1. Dh7, Kd4              | 2. Te3, ~                            | 3. D/S ‡     |
|     | 1. ... Kd6               | 2. Ta6†, &c.                         |              |
|     | 1. ... Kc6               | 2. Te6†, &c.                         |              |
|     | 1. ... L~                | 2. Dd3†, Kc6                         | 3. Ta6‡      |
|     | 1. ... S~                | 2. D(×)e4†, K~                       | 3. Sf5‡      |
| 88. | 1. Tg1, Kf5              | 2. Sf2, g×f2                         | 3. g4‡       |
|     |                          | 2. ... h×g1                          | 3. Dh7‡      |
|     | 1. ... h×g1D             | 2. Sf2†, Kf5                         | 3. D ‡       |
|     |                          | 2. ... g×f2                          | 3. Dh7‡      |
|     | 1. ... Kd3               | 2. Tai, Kc4                          | 3. Df1‡      |
|     |                          | 2. ... Ke4                           | 3. Db1‡      |
|     |                          | 2. ... K~                            | 3. Dd1‡      |
| 89. | 1. Tf4, ~<br>spielt      | 2. L zieht so, daß, wie auch Schwarz | 3. Ta4‡      |
| 90. | 1. De6, D×e6             | 2. Td1†, Ke5                         | 3. f4‡       |
|     | 1. ... Le5               | 2. Dd7†, D×d7                        | 3. Td1‡      |
|     |                          | 2. ... Ld6†                          | 3. D×d6‡     |
|     | 1. ... Tb6/Td8           | 2. Td1†, D×d1                        | 3. De4‡      |
| 91. | 1. Tf2, Th1              | 2. Da1, ~                            | 3. D/T ‡     |
|     | 1. ... L×f2              | 2. Df3, &c.                          |              |
|     | 1. ... g4                | 2. Th2†, &c.                         |              |
| 92. | 1. Tc6, K×d5             | 2. Lb6, Le5                          | 3. Dh1‡      |
|     |                          | 2. ... K×c6/~                        | 3. De6‡      |
|     | 1. ... Kf5               | 2. Dh4, ~                            | 3. Dh5/De4 ‡ |
|     | 1. ... Lg7               | 2. Dh1, ~                            | 3. D ‡       |



93. 1. T×e7, f5      2. D×a5†, K×a5      3. Ta7‡  
     2. ... b×a5      3. Th6‡  
     1. ... a4/b4      2. Dfi(†), &c.
94. 1. Se5, K×e5      2. Le3, Kf6      3. Ld4‡  
     2. ... L×e3      3. Sc6‡  
     2. ... ~      3. D †  
     1. ... K×c5      2. Sd7†, &c.  
     1. ... L×e5      2. Df7, &c.  
     1. ... L×d2/Le3      2. S7c6†, &c.  
     Andere Varianten ähnlich.
95. 1. Sa2, K×f3      2. Td3†, Ke2      3. Sc1‡  
     2. ... Kf4      3. Dg3‡  
     1. ... e5      2. L×e4, f×e4      3. Tf7‡  
     1. ... e×f3      2. Td3, &c.  
     1. ... Ke5      2. Dg3†, &c.
96. 1. Th3, K×h3      2. Df5†, K~      3. Lf2‡  
     1. ... Kf4      2. Le3†, &c.  
     1. ... d5      2. Dd7†, &c.  
     1. ... e3      2. Dfi, &c.
97. 1. c4, Sg2      2. Lb1, S~      3. Db7‡  
     2. ... ~      3. D/L †  
     1. ... Sc2      2. Dh5, &c.  
     1. ... Sf3      2. D×f3, &c.  
     1. ... Sd3      2. e×d3, &c.
98. 1. Sf5, Kd5      2. De6†, K×e6      3. L×c4‡  
     2. ... S×e6      3. Lg2‡  
     1. ... T~/P~      2. L×c4, ~      3. De3‡  
     1. ... S×d7      2. De3†, Kd5      3. Lg2‡  
     Andere Varianten ähnlich.
99. 1. Dh1, K×d5      2. g3, Kc6      3. Tf7‡  
     2. ... Ke4      3. Te3‡  
     2. ... ~      3. Tf5‡  
     1. ... T×f3      2. g×f3†, &c.  
     Andere Varianten ähnlich.
100. 1. Dd8, L×d8      2. Sf8, ~      3. Se6‡  
     1. ... S×d8      2. Sh6, ~      3. Sf5‡  
     Andere Varianten leichter.
101. 1. Dd8, K×b4      2. Da5†, K×a5      3. Sc6‡  
     2. ... K×c4      3. Dc3‡

1. ...  $K \times c4$       2.  $D \times d5 \dagger$ , &c.  
1. ...  $a2$       2.  $Sdc2$ , &c.
102. 1.  $Sc2, L \times c1$       2.  $Da1, \sim$       3.  $D/S/L \ddagger$   
1. ...  $Ke4$       2.  $De5 \dagger$ , &c.  
1. ...  $Kc6$       2.  $Dd4$ , &c.  
Andere Varianten leichter.
103. 1.  $Dc3, K \times d6$       2.  $Dc5 \dagger, K \times c5$       3.  $S \times e4 \ddagger$   
1. ...  $e3$       2.  $D \times d4 \dagger$ , &c.  
1. ...  $b \times c2$       2.  $Sg4 \dagger$ , &c.  
1. ...  $K \times f6$       2.  $D \times d4 \dagger$ , &c.
104. 1.  $Sf3, Ke4$       2.  $Dg6 \dagger, Kf4/K \times f3$       3.  $Dg4 \ddagger$   
2. ...  $Kd5$       3.  $Se3 \ddagger$   
1. ...  $Kc4$       2.  $Da6 \dagger, Kd5$       3.  $Sc3 \ddagger$   
1. ...  $Ke2$       2.  $De3 \dagger$ , &c.  
1. ...  $Kc2$       2.  $Dd2 \dagger$ , &c.  
1. ...  $c4$       2.  $Sc3$ , &c.
105. 1.  $Tf3, Sd3$       2.  $e \times d3 \dagger, K \times f3$       3.  $Dh3 \ddagger$   
2. ...  $K \times d4$       3.  $Dh8 \ddagger$   
1. ...  $Sc6$       2.  $Dg4, \sim$       3.  $D/T \ddagger$   
1. ...  $Th6$       2.  $Te3 \dagger$ , &c.  
1. ...  $Tc5$       2.  $S \times d6 \dagger$ , &c.  
Andere Varianten leicht.
106. 1.  $Tc4, K \times d5$       2.  $Dh1 \dagger, K \times c4$       3.  $Dc6 \ddagger$   
2. ...  $Ke5$       3.  $Tc5 \ddagger$   
2. ...  $Le4$       3.  $D \times e4 \ddagger$   
1. ...  $L \times c4$       2.  $Sf6, \sim$       3.  $De4/Df4 \ddagger$   
1. ...  $Lf5$       2.  $Td4, D \times d4$       3.  $D \times d4 \ddagger$   
2. ...  $\sim$       3.  $Df4/Df6 \ddagger$   
Andere Varianten leicht.
107. 1.  $e7, K \times d6$       2.  $Tcc6 \dagger, K \times c6$       3.  $Db6 \ddagger$   
2. ...  $K \times e7$       3.  $Df8 \ddagger$   
2. ...  $Ke5$       3.  $De3 \ddagger$   
1. ...  $T \sim \times c7$       2.  $Df6 \dagger, Ke4$       3.  $Te6 \ddagger$   
1. ...  $d2$       2.  $Tc4$ , &c.  
1. ...  $Lf7$       2.  $Tf6$ , &c.  
1. ...  $L \times g4$       2.  $De3 \dagger$ , &c.
108. 1.  $Dh3, giD$       2.  $Dc8, Lc4$       3.  $Dh8 \ddagger$   
2. ...  $\sim$       3.  $Dc5 \ddagger$   
1. ...  $Lb5$       2.  $S \times b5 \dagger$ , &c.  
1. ...  $Le2$       2.  $S \times e2 \dagger$ , &c.  
1. ...  $Kc4$       2.  $Dc8 \dagger$ , &c.

109. 1. Dh1, e5      2. Kc3, Kh6      3. Dc1‡  
       2. ... ~      3. Dh4‡  
       1. ... Kh6      2. Lf3, &c.
110. 1. Tc1, Sxf3      2. Tf1, ~      3. L ‡  
 Auf 1. ... Sd~, schlägt im 2. Zuge den S und 3. L Matt.
111. 1. Lg5, Sxg5      2. d4‡, Kxf4      3. Sh5‡  
       2. ... Kd6      3. Sf5‡  
       1. ... Sxd2      2. d4‡, Kd6      3. Sf5‡  
       1. ... exd2      2. Te4‡, Kd6      3. Le7‡  
       1. ... Lf8      2. Lf6‡, &c.  
       1. ... Kd6      2. Sf5‡, &c.
112. 1. Dg5, Sxh2      2. Sc4, ~      3. Dd5‡  
       1. ... Se3      2. Dxe3‡, Kxe3      3. Sxc2‡  
       2. ... Kxe5      3. Dc5‡  
 Andere Varianten leicht.
113. 1. Dd1, Le3      2. Txf4‡, Kxf4      3. Dg4‡  
       2. ... exf4      3. Dd5‡  
       2. ... Lxf4      3. Dd3‡  
       1. ... Kxf5      2. Dd7‡, Kf6      3. Df7‡  
       2. ... Ke4      3. Dd3‡
114. 1. Sg3, exd5      2. Lxd7, ~      3. Lb4/Lf4 ‡  
       1. ... Lxc7/Lxe7      2. Texd7‡, K~      3. L ‡  
       1. ... Kxd5      2. Texd7‡, Ke5      3. Tc5‡  
       1. ... Ke5      2. Lf4‡, Kxd5      3. Texd7‡  
       1. ... e5      2. Tcxd7‡, &c.
115. 1. Sc7, Sf4      2. De5‡, Kxe5      3. Lc3‡  
       2. ... K~      3. Dc3‡  
       1. ... Kd3      2. Db3‡, Kd4      3. Dc3‡
116. 1. Te2, Lxe2      2. Td3, Kxd3      3. Lf5‡  
       2. ... Lxd3      3. Sd6‡
117. 1. Tb7, Lxb7      2. Sb4, ~      3. Te3/Ld5/Lb1 ‡  
       1. ... Kf3      2. Sf2‡, &c.  
       1. ... Sxc6      2. Sdc5‡, &c.  
       1. ... Kd5      2. Sb4‡, &c.  
       1. ... Txc3      2. Sf2‡, Kf3      3. Ld5‡  
 Andere Varianten entsprechend.
118. 1. Teb3, cxb3      2. Lb2, ~      3. D/T/L ‡  
       1. ... c3      2. T3b7, &c.

119. 1. Td5, Kxd5      2. Sxc4, ~      3. L †
120. 1. Tga5, Kxe3      2. Scd1†, Kf3      3. Tf2‡  
       2. ... Kd3      3. Td5‡  
       2. ... Kd4      3. Td2‡  
       1. ... Kxc3      2. Sed1†, &c.  
       1. ... Kd3      2. S-d1, &c.  
       1. ... bxc3      2. Sf5†, &c.  
       1. ... fxe3      2. Se2†, &c.  
       1. ... b3      2. Sed1  
       1. ... f3      2. Scd1
121. 1. Kc4, Sxd2†      2. Kb5, ~      3. D/S †  
       1. ... Sc3      2. Sf7†, Lxf7      3. Lf4‡  
       1. ... Lf5      2. Dxd3†, Kxe5      3. Dd4‡  
       1. ... ~      2. Lb4†, &c.
122. 1. Df3, exf3      2. Sc6†, Ke4/Kf5      3. Lb1‡  
       1. ... exd5      2. Sc6†, Ke6      3. cxd5‡  
       1. ... Sb8      2. Dg3†, &c.
123. 1. Te3, Lxe3      2. Sf3†, Kxe4      3. Lb1‡  
       1. ... fxe3      2. Sg6†, Kxe4      3. Lb1‡  
       1. ... dxe4      2. Sf3†, Kf5      3. Le6‡
124. 1. Ld3, Tf4      2. Da5†, Kxa5      3. Ta6‡  
       1. ... Txf8      2. De4†, K~      3. D/T †
125. 1. Dxf7, Kxd5      2. Sg5, ~      3. Dd3/De6/Db7/Dd7 †  
       1. ... Kxf3      2. Txd4, ~      3. D/T †  
       1. ... exd5      2. De6†, &c.
126. 1. g7, Lc4      2. Ld3†, Ka2      3. Lxc4‡  
       1. ... Ld5      2. Le4†, Ka2      3. Lxd5‡  
       1. ... Le6      2. Lf5†, Ka2      3. Lxe6‡  
       1. ... Lf7†      2. Lg6†, Ka2      3. Lxf7‡  
       1. ... Lg8      2. Lh7†, Ka2      3. Lxg8‡  
       1. ... Lc2      2. Lxc2†, Ka2      3. g8D‡  
       1. ... Ld1      2. Lc2†, Ka2      3. g8D‡  
       1. ... La2      2. Lc2†, Lb1      3. Dxb1‡
127. 1. e3, Td4      2. Sxd4, ~      3. Db1‡  
       1. ... Txe3      2. Db1†, Ke2      3. Sd4‡  
       1. ... Tc3      2. Sxc3, ~      3. Df5‡  
       1. ... Td2      2. Df5†, ~      3. D/S †  
       1. ... T~      2. Dxc4†, Td3      3. Dxd3‡  
       1. ... Ke2      2. Dh5†, Kf1      3. Df3‡  
       1. ... h3      2. Sg3†, Kf2      3. Df5‡

128. 1. Le7, K×e5      2. L×e4, K×e4      3. D×e6‡  
                             2. ... T×e4      3. D×b5‡  
                             2. ... ~      3. Dd5/Df5/D(×)d4 ‡  
      1. ... ~      2. Lh3‡, &c.
129. 1. Ke8, Ld2 in der Diagonale a1 bis h8  
                             2. Sb6‡, Kd4      3. De3‡  
      1. ... Le5/L~      2. D ‡  
      1. ... c5      2. Db7‡, Ke6      3. Df7‡  
      1. ... g3      2. f3, &c.
130. 1. Tg3, S×h6      2. Dd8‡, Ke5      3. Ld6‡  
                             2. ... Se7      3. Lg7‡  
      1. ... S8e7      2. Lg7‡, K×g7      3. Dh8‡  
      1. ... e3      2. Le7‡, &c.  
      1. ... Ke5      2. D×e4‡, K~      3. Te3/D ‡  
      1. ... a1D‡      2. D×a1‡, e5      3. Df1‡

## 3. Lösung der vierzügigen Aufgaben

- |     |                   |                   |                  |               |
|-----|-------------------|-------------------|------------------|---------------|
| 1.  | 1. Sg3, Lg5       | 2. Kh5, Ld8       | 3. Df4†, Kxf4    | 4. Ld6‡       |
|     |                   | 2. ... Sh3        | 3. ... Ke6       | 4. Df5‡       |
|     |                   | 2. ... Kf6        | 3. De4†, Kf6     | 4. De7‡       |
|     |                   | 2. ... Ke6        | 3. Dd7, &c.      |               |
|     | 1. ... Ke6        | 2. De8†, &c.      | 3. Dc6†, &c.     |               |
| 2.  | 1. Td6, exd6      | 2. Sf6†, Kd4      | 3. Te5, ~        | 4. f4‡        |
| 3.  | 1. Td7, Txd7      | 2. Sb6†, axb6     | 3. Dd3, ~        | 4. Dxc4/c4 ‡  |
|     | 1. ... Te1        | 2. Le6†, Txe6     | 3. Df5†, Te5     | 4. Txd6‡      |
| 4.  | 1. Tb5, b6        | 2. Lf8, bxa5      | 3. Lc5, Kxg5     | 4. Le3‡       |
| 5.  | 1. Dh7, gxh2      | 2. Lf3, Txf3      | 3. De4†, Kxe4†   | 4. Sd6‡       |
|     | 1. ... Le4        | 2. ... Txh7       | 3. Sa5†, &c.     |               |
|     | 1. ... e4         | 2. Dxe4†, &c      | 3. Dxf6†, De5    | 4. Dxe5‡      |
| 6.  | 1. Le6, Kxe6      | 2. Dc6†, Kf5      | 3. Dd5†, ~       | 4. D(×)e5‡    |
|     | 1. ... fxe6       | 2. Dd8†, Kc6      | 3. b4, e5        | 4. d5‡        |
|     | 1. ... Kc7        | 2. Dc8†, &c.      |                  |               |
| 7.  | 1. Ta5, Txd4      | 2. Te5, Kxe5      | 3. De7†, Kd5/Kf5 | 4. Se3‡       |
|     | 1. ... Te4        | 2. ... c5         | 3. Te6†, &c.     |               |
|     | 1. ... Tg5        | 2. Lc5†, Ke5      | 3. Le7†, &c.     |               |
| 8.  | 1. Se7, Dxe7      | 2. Td5†, Kxd5     | 3. Db5†, Ke4/Ke6 | 4. Df5‡       |
|     | 1. ... Tc8        | 2. Da5†, &c.      |                  |               |
| 9.  | 1. Tfe8, d2       | 2. Ld8, Kxc8      | 3. c6, Kb8       | 4. Lb6‡       |
|     |                   | 2. ... Kxe8       | 3. c6, Kf8       | 4. Lg5‡       |
| 10. | 1. Tc3 (Zugzwang) | 2. Tb3 (Zugzwang) |                  |               |
|     | 1. ... c6         | 2. ... Le5        | 3. Dd4†, ~       | 4. Sge4/Se6 ‡ |
|     |                   | 2. ... Lc7        | 3. Sd7†, Kd6     | 4. De6‡       |
|     |                   | 2. ... Lf4        | 3. Dxf4, &c.     |               |
|     |                   | 2. ... La7        | 3. Df4, &c.      |               |
|     |                   | 2. ... Sb-        | 3. D(×)d3, &c.   |               |

- |     |                           |                    |                 |                |
|-----|---------------------------|--------------------|-----------------|----------------|
|     |                           | 2. ... Kd6         | 3. Dd4†, &c.    |                |
|     | 1. ... Kb4/Kb5/Kb6        | 2. Tb3†, &c.       |                 |                |
|     | 1. ... La7                | 2. Dd5†, K~        | 3. Tb3†, &c     |                |
|     | 1. ... Sb~                | 2. Txc4†           |                 |                |
| 11. | 1. Lb8, Se4               | 2. Lf3, Kc5        | 3. Dd6†, Sxd6   | 4. La7‡        |
|     |                           | 2. ... Kc6         | 3. Dc7†, Kd5    | 4. Dd6‡        |
|     |                           | 2. ... Kd4         | 3. De5†, Kd3    | 4. Dd5‡        |
|     | 1. ... f6                 | 2. Dd6†, Ke4       | 3. Kc2, ~       | 4. D ‡         |
|     | 1. ... e2                 | 2. Dd6†, Ke4       | 3. Lc2†, &c.    |                |
|     | 1. ... Kc6                | 2. Dd6†, &c.       |                 |                |
| 12. | 1. Sc1, La5               | 2. Le7, Txb6       | 3. De3†, Kxe3   | 4. Lxc5‡       |
|     |                           |                    | 3. ... Sxe3     | 4. Lf6‡        |
|     | 1. ... Txb6               | 2. Lc6, Se5        | 3. Lf6, ~       | 4. Dd3‡        |
|     | Andere varianten ähnlich. |                    |                 |                |
|     | [ 1. Sf2 ]                |                    |                 |                |
| 13. | 1. Lc2, a3                | 2. Da7, Kxe5       | 3. De3†, Kf6    | 4. Lh4‡        |
|     | 1. ... Kxe5               | 2. Lg3†, Kd4       | 3. Dc7, &c.     |                |
|     | 1. ... d4                 | 2. Dh4†, Kxe5      | 3. De4†, &c.    |                |
|     | 1. ... Lxe5               | 2. Dh4†, Kf3       | 3. Df2†, &c.    |                |
| 14. | 1. Sb5, g2                | 2. Sd7, b1D        | 3. Dc6†, Kxc6   | 4. Sb6‡        |
|     |                           |                    | 3. ... Sxc6     | 4. Lf7‡        |
|     |                           | 2. ... Ke6         | 3. Dxf5†, Kxf5  | 4. Sd4‡        |
|     |                           | 2. ... Lc4         | 3. Dxf5†, ~     | 4. Sb6‡        |
|     |                           | 2. ... Sb~         | 3. D(x)c5†, &c. |                |
|     | 1. ... b1D                | 2. Sc7†, Kd6       | 3. Lf4, ~       | 4. Sd3/S(x)f7‡ |
|     |                           | 2. ... Kxe5        | 3. Dc3†, Kd6    | 4. Lf4‡        |
|     | 1. ... Se6                | 2. Dxf5, Sd4/Sed8  | 3. De4†, &c.    |                |
|     | 1. ... Ke6                | 2. Ld7†, &c.       |                 |                |
|     | 1. ... Kxe5               | 2. Dc3†, &c.       |                 |                |
|     | 1. ... Lc4                | 2. Dxc4†, &c.      |                 |                |
|     | 1. ... b1S                | 2. Sd7, &c.        |                 |                |
| 15. | 1. Tb7, Txe3              | 2. Txd7†, Kxc5/Kc6 | 3. Ld5, ~       | 4. Se6‡        |
|     | 1. ... Ke7                | 2. Txd7†, Kxf8/Ke8 | 3. Lf7, ~       | 4. Se6‡        |
|     | 1. ... Kc6                | 2. Txd7, &c.       |                 |                |
|     | 1. ... e4                 | 2. Txd7†, &c.      |                 |                |
| 16. | 1. Lh7, cxd5              | 2. Te6†, Kxe6      | 3. Sc6†, K~     | 4. Dxe7‡       |
|     | 1. ... De6                | 2. Txc3†, Dg6      | 3. Sd7, &c.     |                |
|     | 1. ... Txd5               | 2. Sc4, Tf3/Sf3    | 3. De4†, Kxe4   | 4. Tg4‡        |
|     |                           | 2. ... Kf4         | 3. Tg4†, &c.    |                |

17. 1. Sf5, gxf5      2. Kg3, f4†      3. Kh3, e3      4. Lxf3‡  
 1. ... Lf1      2. Sxe7†, Kh6      3. T×g6†, Kh7      4. Th5‡
18. 1. Le6, Sxe6      2. Sd4, Sxd4      3. Lf2, S~      4. b7‡  
 2. ... Sc5      3. Sb5, S~      4. b7Sc7‡  
 1. ... Sb7      2. Kc7, S~      3. Ld5†, &c.
19. 1. Dc1, e1D      2. Lxc5†, Sxc5      3. Kxc5, ~      4. Sc4/Dxc3 ‡  
 1. ... bxc1S      2. Kd5, Sf6†      3. Kxe6, ~      4. Sc4‡  
 2. ... c6†      3. Kd6, ~      4. S(×)c4‡  
 2. ... Sf4†      3. Kc6, ~      4. Sc4‡  
 1. ... bxc1D      2. Lxc5†, &c.
20. 1. Tc8, Ke4      2. Tg3, Kd4      3. Tgc3, e4/Ke4      4. T8c4‡  
 2. ... Kf4      3. Tcg8, ~      4. T8g4‡
- [ 1. Tfe3 ]
21. 1. Lxa7, Kxd6      2. Sc4†, Kc7      3. Db8†, Sxb8      4. Lb6‡  
 2. ... Kd5      3. De4†, Sxe4      4. Le6‡  
 1. ... Ke5      2. Sc4†, Kf4      3. Se6†, Sxe6      4. Le3‡  
 2. ... Kd4      3. Dd3‡  
 2. ... Kd5      3. De4†, Sxe4      4. Le6‡  
 1. ... Kd4      2. De4†, ~      3. Sb1 ‡  
 1. ... Sxf6      2. Sc4, Kxc4      3. Dc2†, Kb4      4. Sc6‡  
 1. ... Sb6      2. Dxb6, &c.  
 1. ... Sf8      2. Sc4, &c.  
 1. ... Sb8      2. Sf7, Sc6      3. Db3†, ~      4. Dd3/e4 ‡  
 2. ... Sb~      3. Dd1†, ~      4. D/S ‡  
 1. ... Se5      2. De4†, Sxe4      3. Le6†, Kxd6      4. Sb5‡
22. 1. Lc3, Lxf5      2. Dc8, Kd5      3. Dc4†, Kxc4      4. Se3‡  
 2. ... Kf7      3. D×g8†, K×g8      4. Sh6‡  
 2. ... ~      3. Sdf6†/Sde5†, &c.  
 1. ... Kxf5      2. Sc5, S×h3/Sf6/h1D      3. Se3†, Kxf4      4. Se6‡  
 1. ... Sf6      2. Sh6, Kxd7      3. Dc6†, &c.  
 1. ... h1D      2. Sf8†, Kxf5      3. Se3†, Kxf4      4. Se6‡  
 1. ... S×h3      2. Dd5†, Kxd7      3. Dc6†, &c.  
 1. ... Le8      2. Sc5†, &c.
23. 1. Dc7, f2      2. Dxf4, e2      3. Le1, Kxe1      4. Dc1‡  
 2. ... Ke2      3. Dg4†, &c.  
 1. ... Kf2      2. Dc2†, e2      3. Dd2, Kf1      4. De1‡
24. 1. Dh5, g6      2. Sb8, g×h5/Te8      3. Sd7, ~      4. c4‡  
 2. ... Kc5      3. Sd7†, &c.  
 2. ... ~      3. Dxf3†, &c.  
 1. ... Kc5      2. Df7, Kb6      3. Dc4, &c.



- |     |                          |                  |                     |             |
|-----|--------------------------|------------------|---------------------|-------------|
|     |                          | 2. ... d5        | 3. De7†, Kb6        | 4. Db4‡     |
|     | 1. ... Te8               | 2. Df7†, Te6     | 3. Sb4†, &c.        |             |
| 25. | 1. Se7, c×b2             | 2. Db5, Sb6      | 3. Dc5†, K×c5       | 4. Se6‡     |
|     | 1. ... K×e5              | 2. Dd7, K×f4     | 3. Df5†, S×f5       | 4. Sg6‡     |
|     |                          | 2. ... g×f4      | 3. Dd5†, &c.        |             |
|     |                          | 2. ... Sb6       | 3. Sc6†, &c.        |             |
|     |                          | 2. ... Tg1       | 3. De6†, &c.        |             |
|     | 1. ... ~                 | 2. Db5           |                     |             |
| 26. | 1. Sh3, Sd3              | 2. Sf4†, S×f4    | 3. Da1, ~           | 4. c4/Da5 ‡ |
|     | Andere Varianten leicht. |                  |                     |             |
| 27. | 1. Df5, Ld5              | 2. Sd×e5†, Kc5†  | 3. Sc4, K×c4        | 4. Dc2‡     |
|     |                          |                  | 3. ... K×c6 4. Dc8‡ |             |
| 28. | 1. De8, Kg5              | 2. Dh5†, K×h5    | 3. S×e4, ~          | 4. S/L/g4 ‡ |
|     |                          | 2. ... Kf4       | 3. Sc4, &c.         |             |
|     | 1. ... h5                | 2. K×h4, g5†     | 3. K×h5, ~          | 4. D(×)e4 ‡ |
| 29. | 1. Df2, e5               | 2. Df1, c5       | 3. T×h5†, g×h5      | 4. Da6‡     |
|     |                          |                  | 3. ... L×h5         | 4. Df8‡     |
|     |                          |                  | 3. ... K×h5         | 4. Dh3‡     |
|     |                          | 2. ... g×h4      | 3. Dc1†, &c.        |             |
|     | 1. ... g×h4/g4           | 2. De3†, g5      | 3. Dd4, e5          | 4. Dd6‡     |
|     |                          |                  | 3. ... ~            | 4. Dg7‡     |
|     | 1. ... c5                | 2. D×f3, g×h4/g4 | 3. Df4†, g5         | 4. Df6‡     |
| 30. | 1. b3, L×b3              | 2. Df7, L×f7     | 3. Td1, ~           | 4. Td4‡     |
|     |                          | 2. ... Kd3       | 3. D×b3†, &c.       |             |
|     | 1. ... L×c6              | 2. Td1, L×b7     | 3. Lf6, ~           | 4. Td4‡     |
|     | 1. ... Kd3               | 2. Dh7†, &c.     |                     |             |
|     | 1. ... Kd5               | 2. Td1†, &c.     |                     |             |
| 31. | 1. Da3, Db8†             | 2. Kg7, Db6      | 3. Kh7, ~           | 4. D ‡      |
|     | 1. ... Dd4†              | 2. c×d4, &c.     |                     |             |
| 32. | 1. Df4, Kd4              | 2. Dg3, Kc4      | 3. De3, Kb5/d2      | 4. S×d6‡    |
|     |                          |                  | 3. ... Kd5          | 4. Sd2‡     |
|     |                          |                  | 3. ... d5           | 4. Dc5‡     |
|     |                          | 2. ... Kd5       | 3. D×d6†, &c.       |             |
|     |                          | 2. ... d5        | 3. Df2†, &c.        |             |
|     |                          | 2. ... d2        | 3. Dc3†, &c.        |             |
|     | 1. ... Ke6               | 2. Sc5†, d×c5    | 3. Lc6, ~           | 4. Df6‡     |
|     |                          | 2. ... Ke7       | 3. Df6†, Ke8        | 4. Lc6‡     |
|     | 1. ... d2                | 2. S×d6†, Kc5    | 3. De5†, Kb6        | 4. Sc8‡     |
|     |                          | 2. ... Ke6       | 3. Lc6, ~           | 4. Df6‡     |
|     | 1. ... Kc6               | 2. D×d6†, Kb7    | 3. Sc5†, K~         | 4. D/L ‡    |

33. 1. Ld2, K×d2    2. Lf5, Ke3    3. Dh4, ~    4. Df2/De1 †  
     2. ... Kc1/Kd1    3. Da1†, Kd2    4. De1†  
     2. ... c4    3. Db2†, K~    4. Lg4/Df2 †  
     1. ... Kc2    2. Dc3†, Kb1    3. Lc1, ~    4. Db2†  
     1. ... Kc4    2. Le2†, Kd5    3. Le3, Ke4    4. De6†  
                   2. ... Kb3    3. ... c4    4. Lf3†  
                   3. Da1, c4    4. Ld1†  
                   3. ... Kc2    4. Da2†
34. 1. Dh5, K×e4    2. Lc4, g5    3. De2†, Kf5    4. De6†  
     2. ... f3    3. Dg5, &c.    4. De6†  
     1. ... f3    2. Dg5†, K×e4    3. Lc4, &c.
35. 1. Ka2, e3    2. Ta1, e2    3. Sb1, ~    4. S(x)d2†
36. 1. S×c4, h5    2. Df6, h4    3. Dc6†, Kf5    4. Se3†  
     1. ... Kd5    2. Db6, Ke4    3. Dc6†, Kf5    4. Se3†  
     2. ..., B~    3. Dd6†, &c.  
     1. ... g4/f6    2. Df6, &c.  
     [ 1. ... g4! ]
37. 1. L×d5, c×d5    2. Lf8, c6    3. Te7, K×c5    4. Te4†
38. 1. Dg1, K×e4    2. Df2, f5    3. Dg3, f4    4. Dd3†  
     1. ... f5    2. Df2†, &c.  
     1. ... Kf5    2. Kd5, Kf4    3. Dg3†, Kf5    4. Sd6†  
     1. ... Kf3    2. Kd3, Kf4    3. Dg6, &c.
39. 1. T×d4, T×d4    2. Sf2, T~    3. ~×T, g×h6    4. L †  
     1. ... Tc3†    2. Kb7, Tc8    3. K×c8, g×h6    4. Lf6†
40. 1. Td7, f×e3    2. Lb6, Ke5    3. Lc7, K×d4/Kd5    4. Sb7†  
                   3. ... Kf6    4. S×e4†  
                   3. ... Kf4    4. Sf7†  
                   3. ... Tf8†    4. Se8†  
                   3. ... Tf6    4. S×c4/Sf7 †  
     1. ... c2/S×e3    2. Sc8†, Ke5    3. Se7, Kf6    4. Sec6†  
                   3. ... f×e3    4. S×g6†  
                   3. ... ~    4. Sec6/S×g6†  
                   2. ... Kc5    3. Le7†  
     1. ... Lh4    2. Lb6, Ke5    3. S×c4†, Kf6    4. Ld8†
41. 1. Sf4, Sf7/Sh7    2. Sd3†, Sg5    3. Se5, f×e5    4. L×g5†  
     1. ... Sf7/Sh7    2. Se6†, Sg5    3. S×g5, f×g5    4. L×g5†  
     1. ... Sf7/Sh7    2. Sh3†, Sg5    3. S×g5, f×g5    4. L×g5†  
     1. ... Sf3/Se4    2. Sd3†, Sd2    3. Sb2, c×b2    4. L×d2†  
                   2. ... Sg5, wie vorher

42. 1. Te4, K×e4      2. Se5, K×e5      3. Sf6, K×f6      4. Ld4‡  
 1. ... Kd2      2. Se5, K-      3. Sc4(†), K-      4. T †
43. 1. Se4, f×e4      2. Tf1, e2      3. T×f3‡, e×f3      4. Dc1‡  
 1. ... Kg4      2. Dh5‡, K×h5      3. Sf6‡, Kh4      4. Th1‡  
 1. ... f2      2. Dh5, g2      3. Dh3, ~      4. D †  
    2. ... e2      3. D×g5‡, &c.  
 1. ... e2      2. Dc1‡, &c.  
 1. ... g2      2. Dh2‡, &c.
44. 1. Db3, S×a6      2. Df7, Sf5      3. Lf1‡, Ke4      4. Db7‡  
    2. ... S×g6      3. Df1‡, Ke4      4. Df5‡  
    2. ... Lf4‡      3. D×f4, &c.  
    2. ... Ke4      3. Lg2‡, Kd3      4. Df1‡  
 1. ... S×g6      2. Df7, Sf4/Se5/Se7      3. D×f4, &c.  
    2. ... S×a6      3. Df1‡, Ke4      4. Df5‡  
 1. ... Sf5      2. Lf1‡, Ke4      3. Lg2‡, Kd3      4. Sf4‡  
 1. ... Sc6      2. Lg2, Se6/Sb5      3. Dd5‡, &c.  
 1. ... Sed5      2. Dc4‡, K×c4      3. Lf1‡, Kb3      4. Sa1‡  
 1. ... Sb5/Se6      2. T(x)e6, Le5      3. T×e5, &c.  
 1. ... c4      2. Lf1‡, Ke4      3. D×c4‡, K~      4. Df4‡  
 1. ... Ke4/Ke2      2. Dc4‡, &c.
45. 1. Te1, Tb8      2. Lb7, L×b7      3. Dd4‡, S×d4      4. e×d4‡  
    2. ... T×b7      3. Dh2‡, ~      4. Db2/Dh8 †  
 1. ... Tf8      2. S×d7‡, Kd5      3. D×e4‡, K×e4      4. Lb7‡  
 1. ... d5      2. T×e2, &c.  
 1. ... d6      2. Ld4‡, &c.
46. 1. Sa1, Lf8      2. Lf5‡, S×f5      3. Dg2‡, K×d3      4. Dc2‡  
    2. ... Kd5      3. Dc1, ~      4. D †  
 1. ... Kd5      2. Dc1, Ke4      3. Dc6‡, K×d3      4. Dc2‡  
 1. ... Sf3      2. L×f3‡, Kf5      3. Dh3‡, K-      4. Dh5‡  
 1. ... e2      2. D×e2‡, &c.
47. 1. Lf3, L×f3      2. d5‡, L×d5      3. Se2, ~      4. S †  
    2. ... c×d5      3. Sb5, &c.  
 1. ... g5      2. Lh5, &c.
48. 1. Lc6, d×c6      2. Se3, Kd4      3. Df4‡, K~      4. Db4‡  
 1. ... e×d5      2. La4, d4      3. Dc7‡, Kd5      4. Lb3‡  
    2. ... Kd4      3. Df4‡, &c.  
 1. ... d2      2. La8, Kd4      3. Db4‡, K-      4. D †  
 1. ... K×c6      2. Se7‡, &c.  
 1. ... Kd4      2. Db4‡, &c.  
 1. ... La2      2. La8, &c.  
 [1. Dc7‡ 1. Sb6]

49. 1. Tc1, L×c1      2. e4, d×e4      3. Sd5, K×d5      4. Lg8†  
     1. ... d×c3      2. Tf1, &c.      3. ... ~      4. S †  
     2. ... d×e3 ep      3. Se2, ~      4. S †
50. 1. h5, S×d4      2. Lc5†, K×c5      3. Da3†, Kb6      4. Da7†  
     1. ... c5      2. ... K×e6      3. Dg8†, K~      4. D †  
     2. Sf5†, K×e6      3. Dg8†, &c.      4. D †  
     2. ... Kc6      3. Df3†, &c.
51. 1. Dc1, Kb3      2. Lb6, Kb4      3. Dc2, Kb5      4. Db3†  
     1. ... K×a5      2. Db2, Ka4      3. ... Ka3      4. Lc5†  
     2. ... Ka2      3. Dc2†, &c.      4. Db3†  
     2. ... Ka4      3. Dc3, Kb5      4. Da3†  
     2. Db2, Ka4      3. Kc6, Ka5      4. Da3†
52. 1. Tb1, e5      2. Ld8, d3      3. Lb6, Kd4      4. Tb4†  
     1. ... d3      2. La1, e5      3. Tb2, Kd4      4. Tb4†
53. 1. Tg1, L×b2      2. Tb1, L~      3. Da6†, S×a6      4. Sc6†
54. 1. d4, L×d4      2. Sf6, K×e5      3. De7†, Kf4      4. Sh5†  
     1. ... T×e8      2. T×e8, L×d4/d6      3. Dg2, &c.      4. Sh5†  
     2. ... Sc4      3. Dd1, &c.
55. 1. Df4, Se2/Sd5      2. Sf6†, S×f4      3. Kh2, ~      4. S(×)f3/S×g6 †  
     1. ... Kh5      2. Sf7, Se4      3. Sf6†, S×f6      4. D(×)g5†
56. 1. Te5, h5      2. Tg5, K×g5      3. Le5, K×h4      4. Lf6†  
     3. ... Kh6      4. Lf4†
- [ 1. Lb4 1. La3 ]
57. 1. Ta7, ~      2. Sa5(†), ~      3. Tb7(†), ~      4. b4†
58. 1. L×e5, K×e5      2. b3, ~      3. Dh6(†), ~      4. De3†  
     1. ... Kd3      2. ... f6/f5      3. De6† &c.      4. De2†  
     1. ... g3      2. D×a5, Ke4      3. De1†, Kd3      4. De3†  
     1. ... a4      2. Db3, g×f2      3. Df3†, K×e5      4. De3†  
     2. Dh6, &c.

## 4. Lösung der Bedingungsauflagen

1. 1. Ke7, Kf5 2. Lg2, Kg6 3. Le4†, Kh5 4. Kf6, K×h6 5. Kf7, Kh5 6. Kg7, h6  
7. Lg6‡  
3. ... K×h6 4. Kf6, &c.
2. 1. Tg6, Kh7 2. Tg8, Kh6 3. Th8†, Kg6 4. La3, Kf6 5. Th6†, Ke5 6. Td6,  
Kf4 7. Ke7, Ke5 8. Lc1, Kf4 9. Sf2, Ke5 10. Sd3‡
3. 1. Sh6†, g×h6 2. Lh5†, T×h5 3. Df3†, Kg5 4. Ke4, Kg6 5. Df7†, Kg5 6. Sb7,  
Kg4 7. Df3†, Kg5 8. Sd6, Kg6 9. Df7†, Kg5 10. Sc4, Kg4 11. Se3†,  
Kg5 12. Dg8†, Kf6 13. Sd5‡  
[ 1. Le4, Th5 2. Lf3†, Kg5 3. Se6‡ ]
4. 1. Sh4†, Ke5† 2. S2f3†, S×f3† 3. d4†, S×d4† 4. Sf3†, S×f3†  
5. d4†, S×d4† 6. Lf4‡  
5. ... K×d4 6. Lb2‡  
3. ... K×d4 4. Lb2‡

## 5. Lösung der Selbstmatte

1. 1. Lg5, D×g5      2. D×a5†, T×a5/D×a5‡  
    1. ... De2†/Dh2†    2. Db2†, D×b2‡  
    1. ... a4            2. Db3†, a×b3‡
2. 1. Dc4, Tc8        2. Dc5†, Txc5‡  
    1. ... Sc7            2. De6†, S×e6‡  
    1. ... Lc7            2. Df4†, Lxf4‡
3. 1. Db5, Ta1        2. D×b2†, L×b2‡  
    1. ... Lh7            2. Se4†, L×e4‡  
    1. ... e2            2. Th6†, L×h6‡  
    1. ... Ld2†          2. Dfi†, T×fi‡
4. 1. La8, Le6† bis La2†  
                         2. Df8†, Txf8‡  
    1. ... Db2†          2. Df6†, D×f6‡  
    1. ... D×g1/Dg2/Dg3    2. Sf7†, Lxf7‡  
    1. ... d6/d5          2. De6†, L×e6‡  
    1. ... ~              2. Dh7†, L×h7‡
5. 1. Da7, K×e4      2. Dd7, Ta1‡  
    1. ... K×g4          2. Dh7, Ta1‡  
    1. ... Ke6            2. Se3, Ta1‡  
    1. ... Kg6            2. Sg3, Ta1‡
6. 1. Dg7, T×c7      2. Ke5†, K×a1/Kb2    3. Kd6†, T×g7‡  
    1. ... L×c7          2. Kf6†, K×a1/Kb2    3. Ke7†, Le5‡
7. 1. Sf8, S×f8      2. Lf5, S~            3. L×S, D/B ‡  
    1. ... Sc7            2. Lc6, &c.  
    1. ... Sc5            2. Lc2, &c.  
    1. ... Sd8            2. Ld5, &c.  
    1. ... Sg7            2. Lg6, &c.  
    1. ... Sf4            2. Ta5, &c.
8. 1. K×h4, L×g2      2. L×h6†, D×h6      3. T×f6†, L×f6‡  
    1. ... D×g6          2. Ld6†, Te5          3. Dg3†, D×g3‡  
    1. ... T×c6/Tcf8      2. Se2†, T×e2          3. Dh2†, T×h2‡  
    1. ... T×fi            2. L×h6†, D×h6      3. Dg4†, h×g4‡  
    1. ... Sf2            2. L×h6†, D×h6      3. Dg5†, D/B ‡

9. 1. Se7, Sg7/Sd6 2. Df5†, Sxf5 3. Tg4†, Lf4 4. Tc4†, Sd4† 5. Kd1†, e2‡  
1. ... Sc7/Sf6 2. Dd5†, Sxd5 3. Tc4†, Ld4 4. Tg4†, Sf4† 5. Kf1†, e2‡
10. 1. Ld7†, Sc8 2. Df5, Da3/Dh3/Df2 3. Df3†, Dxf3 4. Lc6†, Dxc6†  
5. Sb6†, Dxb6‡  
2. ... Db3/Dg5 3. Dd5†, Dxd5 4. Lc6†, Dxc6† 5. Sb6†, Dxb6‡  
2. ... D~ 3. De4†, Dxe4 4. Lc6†, Dxc6† 5. Sb6†, Dxb6‡  
2. ... Sxd7 3. Sb6†, Sdxb6 4. Dd5†, Sxd5 5. Sc7†, Sxc7‡
11. 1. Se5, Td1/Tf1 2. De3†, Kxe3 3. Lxc5†, Td4‡  
1. ... Txe5 2. Lxc5†, Txc5 3. Td5†, Txd5‡  
1. ... Txb6† 2. Sc6†, dxc6 3. Td5†, cxd5‡  
1. ... Lc1 2. Sc6†, dxc6 3. Se6†, Txe6‡
12. 1. Tc1, Le2/Le4 2. d4†, cxd3 ep 3. Dxc6†, Kxc6 4. Kd4†, bxc1‡  
1. ... Ld1 2. Txd1, f3 3. Tf7, f2 4. Txf2, d4/b1‡  
Andere Varianten ähnlich.
13. 1. Le1, Ta4 2. Dh2†, Kf3 3. Lf5, ~ 4. Lg4†, hxg4‡  
1. ... Ta2 2. Dxc4†, Kf3 3. Ld1†, Te2 4. Dg4†, hxg4‡  
1. ... Ta5 bis g5 2. Sd5†, Txd5 3. Ld2†, Txd2 4. Dg4†, hxg4‡
14. 1. Da7, Sc3 2. Sd7†, Lxd7 3. De3†, Se4 4. Tb5†, Lxb5‡  
1. ... Dxb8 2. f4†, gxf4 3. Sd7†, Lxd7 4. Tb5†, Lxb5‡  
1. ... Ld7 2. f4†, gxf4 3. Sxg6†, Dxg6† 4. Te4†, Dxe4‡  
1. ... gxh4 2. Sf7†, Dxf7 3. f4†, Dxf4 4. Te4†, Dxe4‡

## 6. Lösung der Studien

1. 1. Ld2  
Nur dieser Zug rettet das verlorene Spiel.  
1. ... ~ 2. La5, ~ 3. b4, ~ Patt
2. 1. c7, Tc4 2. Th1†, Kg5 3. Tc1, T×c1 4. Se4†, Kf4 5. Sc3 gewinnt
3. 1. g8D†, K×g8 2. T×g6†, T×g6 3. Sa1†, ~ 4. b3, ~ Patt  
2. ... K~ 3. T×g1, &c.  
1. ... Kh6 2. Dh8†, Kg5 3. De5† &c.
4. 1. Lc3, Dg7† 2. K×f5, D×c3 3. Kg6, Dc6† 4. Kf7, Kh7 5. Dh4†, Dh6 6. Dg4  
und erzwingt Matt  
1. ... c5 2. K×d5†, Kg8 3. De8† &c.  
1. ... Df3 2. Df8†, Kh7 3. Df7†, Kh8 4. Ld4, c5 5. Kf6, Dg4 6. Le5, f4  
7. Ke7† &c  
1. ... Kg8 2. Ke6 &c  
1. ... Dg6 2. Kf4† &c.
5. 1. Sc7†, Ke5 2. De8†, Kf5 3. Dh5†, Ke4 4. Dh7†, Kd4 5. Sb5†  
4. ... Kf4/Ke3 5. Sd5†  
4. ... Kf3 5. Dh3†  
4. ... Ke5 5. Dg7†  
2. ... ~ Auf andere Züge gewinnt Weiss die Dame durch Springer-  
schach.  
1. ... Kd6 2. Sb5†  
1. ... Kc5 2. Dc6† und 3. Sb5†/Sd5†
6. 1. Tf7, Dg8 2. Ld5, g5 3. Te7, Df8† 4. Kg6  
3. ... D×d5 4. Te8†  
Falsch wäre 3. ... g4 wegen Dg7† Patt erzwingend.
7. 1. Tg1, Ta8 2. g7, Kh5 3. Kf3, Tg8 4. K×f4, Kh6 5. Kf5, Kh7 am besten.  
6. Kf6 gewinnt. Auf 6. ... Tf8† folgt 7. g×f8T
8. 1. Ta2†, Kb1 2. Sc2, De3† 3. S×e3, L×e3 4. Te2, Lh6 5. Te1†, Lc1 6. Th1,  
g6 7. Te1, g5 8. Th1, g4 9. Te1, g3 10. Th1 und setzt im nächsten  
Zuge Matt.  
2. ... D×c2† 3. T×c2, Lg5 4. Tg2, Le3 5. Te2 gewinnt. Falsch wäre 5. T×g7  
wegen 5. ... Kc1.



9. 1. Lg8†, Kh8 2. Le6, Ld3 3. Kf4, Lb5 4. Ke5, Le8 5. Kd6, Kh7 6. Ke7, Kg6  
7. Ld7, Lf7 8. Lf5†  
2. ... Le8 3. Kf5, Kh7 4. Ld5, Kh6 5. Ke6, Kg6 6. Ke7, Kg5 7. Le6, Lh5  
8. Lf7, Ld1 9. Le8, Lb3 10. Ld7, Lg8 11. Le6  
Auf 2. K×g6, K×g8 Remis; auf 2. Kh6, Lf7 Remis
10. 1. Ta7†, Kb1 2. Tb7†, Ka2 3. Kc2, Dd4 4. Sc3† gewinnt
11. 1. Tb1†, Kd2 2. Sef3†, Kc3 3. Tb3†, Kc4 4. Se5†, K×d4 5. Td3†, Ke4 am  
besten 6. Sf3, Lf6 7. Td4†, L×d4 8. Sg5 Matt  
4. ... Kc5 5. Td3, b3 6. a3, Sd2 7. S×b3†, S×b3 8. Td5 Matt
12. 1. Lb6, D×b6 2. Ta1†, Kb8 3. Se6, Kc8 4. Kf5, Kd7 5. Kf6, Ke8 6. Ta2, Kd7  
7. Ta8 gewinnt  
5. ... Kc8 6. Ke7, Kb8 7. Kd7 gewinnt
13. 1. Sc5†, Kd6 2. Sc4†, Kd5 3. Se3† &c.  
Wenn 1. ... Kf5/Kd5 2. e4† und gewinnt mit dem nächsten Zuge die  
Dame.
14. 1. e6†  
1. ... K×e6 2. Lb3 gewinnt mit dem nächsten Zuge die Dame und das  
Spiel.  
Auf 1. ... D×e6 gewinnt 2. Lg4.
15. 1. Dg8†, Ke7 2. Sc6†, Kd7 3. Se5†, Kc7 4. Df7†, Kb8 5. De8†, Ka7 6. Dd7†,  
Ka6 7. Dc8†, Kb5 8. Dc4†, Ka5 9. Sc6 Matt  
4. ... Kc8 5. Dd7†, Kb8 6. Sc6† &c.  
3. ... Ke7 4. Df7†, Kd8 5. Dd7 Matt oder 4. ... Kd6 5. Sc4† gewinnt  
die Dame.  
2. ... Kf6 3. Dg6 Matt; 2. ... Kd6 3. Df8† gewinnt die Dame.  
Andere Varianten ähnlich.  
[1. Dg7†!]
16. (Nur die Züge für Weiss werden angegeben)  
1. Sf5† 2. Se5† 3. Se7† 4. Sd7† 5. Sc8† 6. Sb8† 7. Sa7† 8. Sa6† 9. Sb5†  
10. Sb4† 11. Sc3† (Schwarz muss Kf2 spielen, weil auf Ke1 12. Sd3  
mattsetzt) 12. Sd3† 13. Se4† 14. Se5† 15. Sg3† 16. Sg4† Spielt nun  
Schwarz Kg6, so wiederholt Weiss wiederum 17. Se5† &c; spielt  
Schwarz jedoch 16. ... Ke7, so folgt 17. Sf5† unter König wird wie-  
derum über das ganze Brett getrieben wie vorher &c. In beiden Fäl-  
len also Remis
17. 1. e6, Te3† 2. Kf1, T×e6 3. Dg2†, R×g2 4. b8D†, Kh7 5. K×g2, T×f6 6. De5,  
Te6 7. D×c5, Te2† 8. Kf3 gewinnt.  
Auf 1. ... f×e6 gewinnt 2. Dh2.
18. 1. h7†, Kg7 2. h8D†, K×h8 3. Kf7 gewinnt.

